








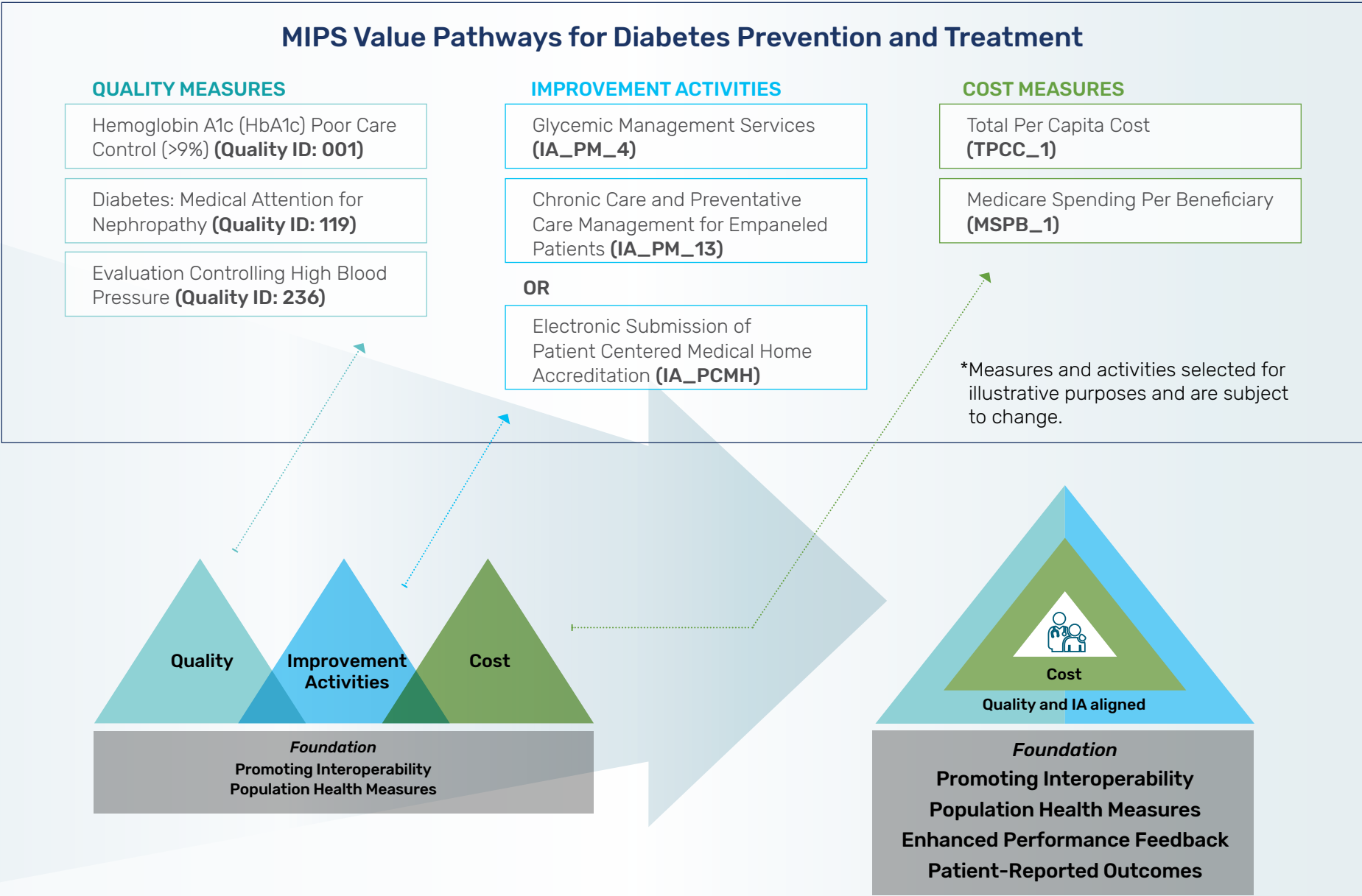


MIPS Value Pathways: Diabetes Example

Structure of Traditional MIPS	MIPS Value Pathways Framework	Future State of MIPS
-------------------------------	-------------------------------	----------------------

MIPS moving towards value; focusing participation on specific meaningful measures/activities or public health priorities; facilitating movement to Advanced APM track

 <p>Endocrinologist chooses from same set of measures as all other clinicians, regardless of specialty or practice area</p>	 <p>Endocrinologist reports same "foundation" of PI and population health measures as all other clinicians but now has a MIPS Value Pathway with measures and activities that focus on diabetes prevention and treatment</p>	 <p>Endocrinologist reports on same foundation of measures with patient-reported outcomes also included</p>
 <p>Four performance categories feel like four different programs</p>	 <p>Endocrinologist reports on fewer measures overall in a pathway that is meaningful to their practice</p>	 <p>Performance category measures in endocrinologist's Diabetes Pathway are more meaningful to their practice</p>
 <p>Reporting burden higher and population health not addressed</p>	 <p>CMS provides more data; reporting burden on endocrinologist reduced</p>	 <p>CMS provides even more data (e.g. comparative analytics) using claims data and endocrinologist's reporting burden even further reduced</p>



Population Health Measures: a set of administrative claims-based quality measures that focus on public health priorities and/or cross-cutting population health issues; CMS provides the data through administrative claims measures, for example, the All-Cause Hospital Readmission measure.