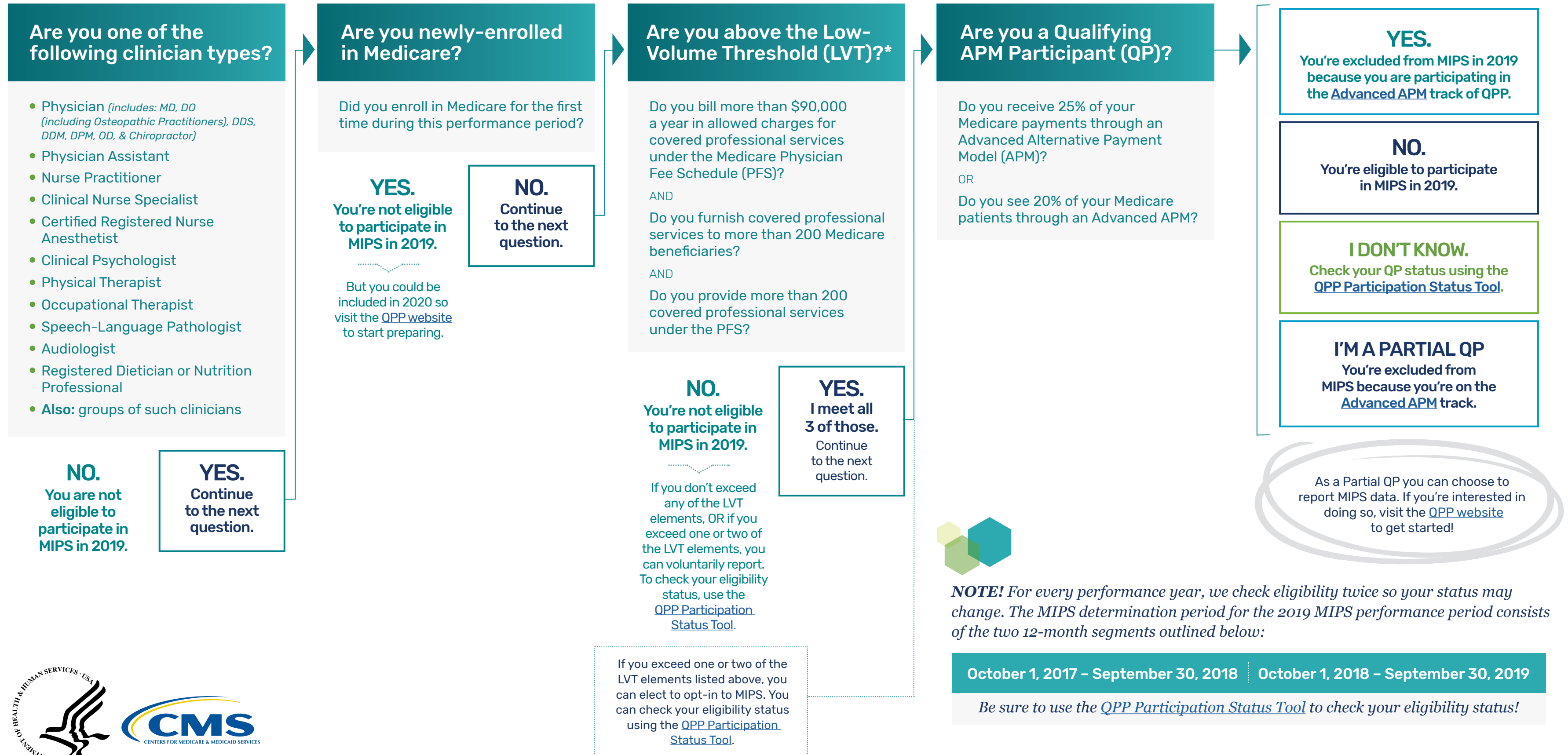


Am I Eligible to Participate in the Merit-based Incentive Payment System (MIPS) Track of the Quality Payment Program (QPP) in the 2019 Performance Period?



*NOTE: CMS analyzes claims for services provided during the MIPS determination period to determine whether individual clinicians, groups, virtual groups and MIPS APM Entities exceed the elements of the low-volume threshold. See the Key Terms section below to learn more.

Am I Eligible to Participate in the Merit-based Incentive Payment System (MIPS) track of the Quality Payment Program (QPP) in the 2019 performance period?

continued



Key Terms

Low-Volume Threshold Elements – Beginning with the 2019 performance year, the low-volume threshold that applies to an individual eligible clinician, group, or APM Entity that, during the MIPS determination period, has allowed charges for covered professional services less than or equal to \$90,000, furnishes covered professional services to 200 or fewer Medicare Part B-enrolled individuals, or furnishes 200 or fewer covered professional services to Medicare Part B-enrolled individuals.

MIPS determination period means, beginning with the 2021 MIPS payment year, a 24-month assessment period consisting of:

- (i) An initial 12-month segment beginning on October 1 of the calendar year 2 years prior to the applicable performance period and ending on September 30 of the calendar year preceding the applicable performance period, and that includes a 30-day claims run out; and
- (ii) A second 12-month segment beginning on October 1 of the calendar year preceding the applicable performance period and ending on September 30 of the calendar year in which the applicable performance period occurs.

New Medicare-Enrolled MIPS eligible clinician means an eligible clinician who first becomes a Medicare-enrolled eligible clinician within the Provider Enrollment, Chain and Ownership System (PECOS) during the performance period for a year and had not previously submitted claims under Medicare as an individual, an entity, or a part of a physician group or under a different billing number or tax identifier.

Partial Qualifying APM Participant (Partial QP) means an eligible clinician determined by CMS to have met the relevant payment or patient count Partial QP thresholds for a year.

Qualifying APM Participant (QP) means an eligible clinician determined by CMS to have met or exceeded the relevant QP payment amount or QP patient count threshold for a year based on participation in an Advanced APM Entity.



For More Information

- Review the [About MIPS Participation](#) and [Individual or Group Participation](#) web pages
- Download the [2019 MIPS Participation and Eligibility Fact Sheet](#)
- Check out additional resources in the [QPP Resource Library](#)

