

Quality ID #478: Functional Status Change for Patients with Neck Impairments

2026 COLLECTION TYPE:

MERIT-BASED INCENTIVE PAYMENT SYSTEM (MIPS) CLINICAL QUALITY MEASURE (QOM)

MEASURE TYPE:

Patient-Reported Outcome-Based Performance Measure – High Priority

DESCRIPTION:

A patient-reported outcome measure (PROM) of risk-adjusted change in functional status (FS) for patients 14 years+ with neck impairments. The change in FS is assessed using the FOTO Neck FS PROM. The measure is adjusted to patient characteristics known to be associated with FS outcomes (risk-adjusted) and used as a performance measure at the patient, individual clinician, and clinic levels to assess quality.

INSTRUCTIONS:

Reporting Frequency:

This measure is to be submitted a minimum of **once per treatment episode** for denominator eligible cases as defined in the denominator criteria.

Intent and Clinician Applicability:

The intent of this measure is to assess the change in functional status for patients 14 years and older with a diagnosis of neck impairments or functional deficit affecting the neck. This measure may be submitted by Merit-based Incentive Payment System (MIPS) eligible clinicians who perform the quality actions as defined by the numerator based on the services provided and the measure-specific denominator coding.

Measure Strata and Performance Rates:

This measure contains one stratum defined by a single submission criteria.

This measure produces a single performance rate.

Implementation Considerations:

For purposes of MIPS implementation, this episode measure is submitted once for each treatment episode during the performance period. It requires submitting the patient's FS PROM score, at a minimum, at the start (Initial Evaluation or Intake) and again at the conclusion (Discharge) of a Treatment Episode. The Initial Evaluation score is recorded during the first treatment encounter, and the Discharge score is recorded at or near the conclusion of the final treatment encounter.

Definitions:

Functional Deficit – Limitation or impairment of physical abilities/function resulting in evaluation and inclusion in a treatment plan of care.

Treatment Episode – A "Treatment Episode" is defined as beginning with an Initial Evaluation for a functional neck deficit, progressing through treatment without interruption (for example, a hospitalization or surgical intervention), and ending with Discharge signifying that the treatment has been completed. A patient currently under clinical care for a neck deficit remains in a single "Treatment Episode" until the Discharge is conducted and documented by the MIPS eligible clinician.

Initial Evaluation – An "Initial Evaluation" is the first encounter for a functional deficit involving the neck and includes an evaluation (CPT 97161, 97162, 97163, 97165, 97166, 97167, 99202, 99203, 99204, 99205, 99212, 99213, 99214, 99215, 98940, 98941, 98942, 98943*, 99304, 99305, or 99306), or an "Initial Evaluation" Status M-code (M1143). A patient presenting with a neck impairment, who has had an interruption of a Treatment Episode for the same functional neck deficit secondary to an appropriate reason like hospitalization or surgical intervention, is an "Initial Evaluation."

Discharge – "Discharge" is accompanied by a treatment finalization and evaluation completion M-Code (M1009) identifying the close of a Treatment Episode for the same neck deficit identified at the Initial Evaluation and

documented by a "Discharge" report by the MIPS eligible clinician. An interruption in clinical care for an appropriate reason like hospitalization or surgical intervention requires a discharge from the current Treatment Episode.

Encounter – A visit between the patient and the provider for the purpose of assessing and/or improving a functional deficit.

Patient Reported – The patient directly provides answers to the FS PROM items. If the patient cannot reliably respond independently (e.g., in the presence of cognitive deficits), a suitable proxy may provide answers.

Risk Adjustment Factors – A set of factors used to calculate a patient's risk score which predict the outcome score. In addition to the risk adjustment factors collected in the patient demographic portion of the assessment, a full list of considered specific comorbidity details can be found in Table 1 of this publication

<https://www.ncbi.nlm.nih.gov/pubmed/29787696> ⁷.

Neck FS PROM score – The "Neck FS PROM score" may be achieved using one of three forms: the FOTO Neck FS PROM computer adaptive test, the FOTO Neck FS PROM short form, or an alternative PROM score that is cross-walked to the Neck FS PROM using a cross-walk form developed by the measure steward. Computer adaptive test (CAT) is recommended to achieve best balance between reduced patient burden and score precision. At least one cross-walk form has been developed by the measure steward and meets scientific standards to successfully link a construct-equivalent PROM using advanced psychometric equating methods.

For more information about the Neck FS PROM score forms and to access the components that are available free of charge for use with this MIPS quality measure [e.g., patient-reported outcome measure(s), cross-walking, risk adjustment], visit [Public Access to FOTO Measures](#).

Telehealth:

TELEHEALTH ELIGIBLE: This measure is appropriate for and applicable to the telehealth setting. Patient encounters conducted via telehealth using encounter code(s) found in the denominator encounter criteria are allowed for this measure. Therefore, if the patient meets all denominator criteria for a telehealth encounter, it would be appropriate to include them in the denominator eligible patient population. Telehealth eligibility is at the measure level for inclusion within the denominator eligible patient population and based on the measure specification definitions which are independent of changes to coding and/or billing practices.

Measure Submission:

The quality data codes listed do not need to be submitted by MIPS eligible clinicians, groups, or third party intermediaries that utilize this collection type for submissions; however, these codes may be submitted for those third party intermediaries that utilize Medicare Part B claims data. The coding provided to identify the measure criteria: Denominator or Numerator, may be an example of coding that could be used to identify patients that meet the intent of this clinical topic. When implementing this measure, please refer to the 'Reference Coding' section to determine if other codes or code languages that meet the intent of the criteria may also be used within the medical record to identify and/or assess patients. For more information regarding Application Programming Interface (API), please refer to the Quality Payment Program (QPP) website.

DENOMINATOR:

All patients aged 14 years and older with neck impairments who initiated a Treatment Episode.

DENOMINATOR NOTE:

**Signifies that this CPT Category I code is a non-covered service under the Medicare Part B Physician Fee Schedule (PFS). These non-covered services should be counted in the denominator population for MIPS CQMs.*

Denominator Criteria (Eligible Cases):

All patients aged >14 years on date of Initial Evaluation

AND

Patient encounter during the performance period identifying evaluation (CPT or M-code): 97161, 97162, 97163, 97165, 97166, 97167, 98000, 98001, 98002, 98003, 98004, 98005, 98006, 98007, 98008, 98009, 98010, 98011, 98012, 98013, 98014, 98015, 98016, 99202, 99203, 99204, 99205, 99212, 99213, 99214, 99215, 98940, 98941, 98942, 98943*, 99304, 99305, 99306, M1143, M1426

AND

With a neck impairment and/or diagnosis pertaining to a functional deficit affecting the neck at time of initial evaluation (ICD-10-CM): G54.0, G54.2, M40.03, M40.12, M40.13, M40.202, M40.203, M41.122, M41.123, M41.22, M41.23, M41.41, M41.42, M41.43, M41.52, M41.53, M41.82, M41.83, M42.01, M42.02, M42.03, M42.11, M42.12, M42.13, M43.01, M43.02, M43.03, M43.11, M43.12, M43.13, M43.21, M43.22, M43.23, M43.3, M43.4, M43.5X2, M43.5X3, M43.6, M43.8X1, M43.8X2, M43.8X3, M45.A1, M45.A2, M45.A3, M45.1, M45.2, M45.3, M46.01, M46.02, M46.03, M46.21, M46.22, M46.23, M46.31, M46.32, M46.33, M46.41, M46.42, M46.43, M46.51, M46.52, M46.53, M46.81, M46.82, M46.83, M46.91, M46.92, M46.93, M47.11, M47.12, M47.13, M47.21, M47.22, M47.23, M47.811, M47.812, M47.813, M47.891, M47.892, M47.893, M48.01, M48.02, M48.03, M48.11, M48.12, M48.13, M48.21, M48.22, M48.23, M48.31, M48.32, M48.33, M48.41XD, M48.41XG, M48.41XS, M48.42XD, M48.42XG, M48.42XS, M48.43XD, M48.43XG, M48.43XS, M48.51XD, M48.51XG, M48.51XS, M48.52XD, M48.52XG, M48.52XS, M48.53XD, M48.53XG, M48.53XS, M48.8X1, M48.8X2, M48.8X3, M49.81, M49.82, M49.83, M50.01, M50.02, M50.021, M50.022, M50.023, M50.03, M50.11, M50.12, M50.121, M50.122, M50.123, M50.13, M50.21, M50.22, M50.221, M50.222, M50.223, M50.23, M50.31, M50.32, M50.321, M50.322, M50.323, M50.33, M50.81, M50.82, M50.821, M50.822, M50.823, M50.83, M50.91, M50.92, M50.921, M50.922, M50.923, M50.93, M53.0, M53.1, M53.2X1, M53.2X2, M53.2X3, M53.81, M53.82, M53.83, M54.11, M54.12, M54.13, M54.2, M54.01, M54.02, M54.03, M95.3, M99.01, M99.11, M99.21, M99.31, M99.41, M99.51, M99.61, M99.71, M99.81, P14.3, Q76.1, Q76.411, Q76.412, Q76.413, Q76.5, S12.000D, S12.000G, S12.000K, S12.000S, S12.001D, S12.001G, S12.001K, S12.001S, S12.01XD, S12.01XG, S12.01XK, S12.01XS, S12.02XD, S12.02XG, S12.02XK, S12.02XS, S12.030D, S12.030G, S12.030K, S12.030S, S12.031D, S12.031G, S12.031K, S12.031S, S12.040D, S12.040G, S12.040K, S12.040S, S12.041D, S12.041G, S12.041K, S12.041S, S12.090D, S12.090G, S12.090K, S12.090S, S12.091D, S12.091G, S12.091K, S12.091S, S12.100D, S12.100G, S12.100K, S12.100S, S12.101D, S12.101G, S12.101K, S12.101S, S12.110D, S12.110G, S12.110K, S12.110S, S12.111D, S12.111G, S12.111K, S12.111S, S12.112D, S12.112G, S12.112K, S12.112S, S12.120D, S12.120G, S12.120K, S12.120S, S12.121D, S12.121G, S12.121K, S12.121S, S12.130D, S12.130G, S12.130K, S12.130S, S12.131D, S12.131G, S12.131K, S12.131S, S12.14XD, S12.14XG, S12.14XK, S12.14XS, S12.150A, S12.150B, S12.150D, S12.150G, S12.150K, S12.150S, S12.151D, S12.151G, S12.151K, S12.151S, S12.190D, S12.190G, S12.190K, S12.190S, S12.191D, S12.191G, S12.191K, S12.191S, S12.200D, S12.200G, S12.200K, S12.200S, S12.201D, S12.201G, S12.201K, S12.201S, S12.230D, S12.230G, S12.230K, S12.230S, S12.231D, S12.231G, S12.231K, S12.231S, S12.24XD, S12.24XG, S12.24XK, S12.24XS, S12.250D, S12.250G, S12.250K, S12.250S, S12.251D, S12.251G, S12.251K, S12.251S, S12.290D, S12.290G, S12.290K, S12.290S, S12.291D, S12.291G, S12.291K, S12.291S, S12.300D, S12.300G, S12.300K, S12.300S, S12.301D, S12.301G, S12.301K, S12.301S, S12.330D, S12.330G, S12.330K, S12.330S, S12.331D, S12.331G, S12.331K, S12.331S, S12.34XD, S12.34XG, S12.34XK, S12.34XS, S12.350D, S12.350G, S12.350K, S12.350S, S12.351D, S12.351G, S12.351K, S12.351S, S12.390D, S12.390G, S12.390K, S12.390S, S12.391D, S12.391G, S12.391K, S12.391S, S12.400D, S12.400G, S12.400K, S12.400S, S12.401D, S12.401G, S12.401K, S12.401S, S12.430D, S12.430G, S12.430K, S12.430S, S12.431D, S12.431G, S12.431K, S12.431S, S12.44XD, S12.44XG, S12.44XK, S12.44XS, S12.450D, S12.450G, S12.450K, S12.450S, S12.451D, S12.451G, S12.451K, S12.451S, S12.490D, S12.490G, S12.490K, S12.490S, S12.491D, S12.491G, S12.491K, S12.491S, S12.500D, S12.500G, S12.500K, S12.500S, S12.501D, S12.501G, S12.501K, S12.501S, S12.530D, S12.530G, S12.530K, S12.530S, S12.531D, S12.531G, S12.531K, S12.531S, S12.54XD, S12.54XG, S12.54XK, S12.54XS, S12.550D, S12.550G, S12.550K, S12.550S, S12.551D, S12.551G, S12.551K, S12.551S, S12.590D, S12.590G, S12.590K, S12.590S, S12.591D, S12.591G, S12.591K, S12.591S, S12.600D, S12.600G, S12.600K, S12.600S, S12.601D, S12.601G, S12.601K, S12.601S, S12.630D, S12.630G, S12.630K, S12.630S, S12.631D, S12.631G, S12.631K, S12.631S, S12.64XD, S12.64XG, S12.64XK, S12.64XS, S12.650D, S12.650G, S12.650K, S12.650S, S12.651D, S12.651G, S12.651K, S12.651S, S12.690D, S12.690G, S12.690K, S12.690S, S12.691D, S12.691G, S12.691K, S12.691S, S12.8XXD, S12.8XXS, S12.9XXD, S12.9XXS, S13.0XXD, S13.0XXS, S13.100D, S13.100S, S13.101D, S13.101S, S13.110D, S13.110S, S13.111D, S13.111S, S13.120D, S13.120S, S13.121D, S13.121S, S13.130D, S13.130S, S13.131D, S13.131S, S13.140D, S13.140S, S13.141D, S13.141S, S13.150D, S13.150S, S13.151D, S13.151S, S13.160D, S13.160S, S13.161D, S13.161S, S13.170D, S13.170S, S13.171D, S13.171S, S13.180D, S13.180S, S13.181D, S13.181S, S13.29XD, S13.29XS, S13.4XXA, S13.4XXD, S13.4XXS, S13.5XXA, S13.5XXD, S13.5XXS, S13.8XXA, S13.8XXD, S13.8XXS, S14.0XXD, S14.0XXS, S14.2XXD, S14.2XXS, S14.3XXD, S14.3XXS, S14.4XXD, S14.4XXS, S14.5XXD, S14.5XXS, S14.8XXD, S14.8XXS, S14.9XXD, S14.9XXS, S16.1XXA, S16.1XXD, S16.1XXS, S16.2XXA, S16.2XXD, S16.2XXS, S16.8XXA, S16.8XXD, S16.8XXS, S16.9XXA, S16.9XXD, S16.9XXS, S17.8XXA, S17.8XXD, S17.8XXS, S19.89XA, S19.89XD, S19.89XS, S19.9XXA, S19.9XXD, S19.9XXS

AND

Discharge/discontinuation of the episode of care documented in the medical record (M-code): M1009

AND NOT

DENOMINATOR EXCLUSIONS:

Documentation stating patient has a diagnosis of a degenerative neurological condition such as ALS, MS, or Parkinson's diagnosed at any time before or during the episode of care: G2151

OR

Patient unable to complete the Neck FS PROM at Initial Evaluation and/or Discharge due to blindness, illiteracy, severe mental incapacity or language incompatibility, and an adequate proxy is not available: M1149

NUMERATOR:

Patients who were presented with the Neck FS PROM at Initial Evaluation (Intake) and at or near Discharge (Status) for the purpose of calculating the patient's Residual Score.

Definitions:

Functional Status (FS) Score – This is the **Neck FS PROM** score as described under Instructions Definitions.

FS Change Score – The "FS Change Score" is calculated by subtracting the FS Score at Initial Evaluation from the FS Score at Discharge.

Predicted FS Change Score – The "Predicted FS Change Score" is calculated by accounting for the influence of multiple patient characteristics as designated by the risk adjustment model. For each patient completing the Neck FS PROM at Initial Evaluation (Intake), the predictive model provides a risk-adjusted prediction of FS change at Discharge.

Residual Score – The "Residual Score" is calculated by subtracting the Predicted FS Change Score from the FS Change Score (i.e., actual minus predicted). The "Residual Score", which is in the same units as the FS Score, should be interpreted as the amount of FS change that is different than the amount of change that was predicted given the risk-adjustment variables of the patient being treated. Residual Scores of zero (0) or greater (> 0) should be interpreted as FS Change Scores that met or exceeded what was predicted. Residual Scores less than zero (< 0) should be interpreted as FS change scores that were less than predicted. Aggregated Residual Scores allow meaningful comparisons amongst clinicians or clinics.

Numerator Options:

Performance Met:

Residual Score for the neck impairment successfully calculated and the score was equal to zero (0) or greater than zero (> 0) (G2152)

OR

Denominator Exception:

Ongoing care not clinically indicated because the patient needed a home program only, referral to another provider or facility, or consultation only, as documented in the medical record (M1146)

OR

Denominator Exception:

Ongoing care not medically possible because the patient was discharged early due to specific medical events, documented in the medical record, such as the patient became hospitalized or scheduled for surgery (M1147)

OR

Denominator Exception:

Ongoing care not possible because the patient self-discharged early (e.g., financial or insurance reasons, transportation problems, or reason unknown) (M1148)

OR

Denominator Exception:

Patient refused to participate (G2209)

OR

Performance Not Met:

Residual Score for the neck impairment successfully calculated and the score was less than zero (< 0) (**G2167**)

OR

Performance Not Met:

Residual Score for the neck impairment not measured because the patient did not complete the Neck FS PROM at Initial Evaluation and/or near Discharge, reason not given (**G2210**)

RATIONALE:

Neck impairments provide a common reason for patients seeking care in healthcare settings. During 2017, the FOTO database recorded 414,436 episodes of care across multiple healthcare systems and clinics throughout the United States. Prevalence estimates from epidemiologic studies on neck pain (defined as pain in the neck, with or without pain referred into one or both upper limbs, that lasts for at least 1 day) have a mean 1-year prevalence range of 23%¹ to 37% and a mean lifetime prevalence of 49%.² Consequently, neck pain is recognized as a global health care burden.^{3,4} Assessment of functional status using PROMs in patients with neck pain is an essential step in addressing this burden, provided the scores can be interpreted in clinically useful ways to inform patient-centered clinical decision making.^{5,6}

The Neck FS PROM offers the advantages of modern scientific measurement methods like item response theory (IRT). IRT and related methods provide a number of measurement advantages including valid assumptions of interval scaling, superior scale coverage, uni-dimensionality for valid score change interpretations, and precise methods for evaluating components of the measures such as the functional questions and scales. IRT additionally forms the basis for computer adaptive testing (CAT) administration which reduces patient burden by minimizing the number of functional questions the patient must respond to in order to obtain a precise estimate of the patient's functional ability level. When combined with robust risk adjustment to provide for fair comparisons between providers, the Neck FS PROM forms the basis for a valuable patient reported outcome performance measure (PRO-PM).

CLINICAL RECOMMENDATION STATEMENTS:

PROMs are increasingly advocated as necessary components of an overall strategy to improve healthcare^{7,8} and are advocated for use in clinical decision making in clinical practice guidelines pertaining to neck impairments.^{9,10}

Placing risk-adjusted Neck FS PROM data directly into the hands of the provider embodies the definition of patient-centered healthcare and is consistent with National Quality Forum's vision to achieve performance improvement and accountability through patient-reported outcomes.¹¹ This approach improves quality of care by promoting improved communication between provider and patient, and it enhances the provider's understanding of the patient's perception of functional status. The Neck FS PROM and PRO-PM results can be shared with the patient to further promote patient engagement.

REFERENCES:

1. Hoy, D.G., Protani, M., De, R., and Buchbinder, R. *The epidemiology of neck pain*. Best Pract Res Clin Rheumatol, 2010. 24(6): p. 783-92. <https://www.ncbi.nlm.nih.gov/pubmed/21665126>.
2. Fejer, R., Kyvik, K.O., and Hartvigsen, J. *The prevalence of neck pain in the world population: a systematic critical review of the literature*. Eur Spine J, 2006. 15(6): p. 834-48. <https://www.ncbi.nlm.nih.gov/pubmed/15999284>.
3. Hoy, D., March, L., Woolf, A., Blyth, F., Brooks, P., Smith, E., Vos, T., Barendregt, J., Blore, J., Murray, C., Burstein, R., and Buchbinder, R. *The global burden of neck pain: estimates from the global burden of disease 2010 study*. Ann Rheum Dis, 2014. 73(7): p. 1309-15. <https://www.ncbi.nlm.nih.gov/pubmed/24482302>.
4. Hurwitz, E.L., Randhawa, K., Yu, H., Cote, P., and Haldeman, S. *The Global Spine Care Initiative: a summary of the global burden of low back and neck pain studies*. Eur Spine J, 2018. 27(Suppl 6): p. 796-801. <https://www.ncbi.nlm.nih.gov/pubmed/29480409>.
5. Wang, Y.C., Cook, K.F., Deutscher, D., Werneke, M.W., Hayes, D., and Mioduski, J.E. *The Development and Psychometric Properties of the Patient Self-Report Neck Functional Status Questionnaire (NFSQ)*. J Orthop Sports Phys Ther, 2015. 45(9): p. 683-92. <https://www.ncbi.nlm.nih.gov/pubmed/26158883>.

6. Deutscher, D., Cook, K.F., Kallen, M.A., Werneke, M.W., Hayes, D., Mioduski, J.E., Fritz, J., Woodhouse, L.J., and Stratford, P.W. *Clinical Interpretation of the Neck Functional Status Computerized Adaptive Test*. *J Orthop Sports Phys Ther*, 2019. 49(12): p. 875-886. <https://www.ncbi.nlm.nih.gov/pubmed/31291550>.
7. Daniel Deutscher, Mark W. Werneke, Deanna Hayes, Jerome e. Mioduski, Karon F. Cook, Julie M. Fritz, Linda J. Woodhouse, Paul W. Stratford. *Impact of Risk Adjustment on Provider Ranking for Patients With Low Back Pain Receiving Physical Therapy* DOI: 10.2519/jospt.2018.7981 Table: 1
<https://pubmed.ncbi.nlm.nih.gov/29787696>
8. Black, N. *Patient reported outcome measures could help transform healthcare*. *BMJ*, 2013. 346: p. f167.
<https://www.ncbi.nlm.nih.gov/pubmed/23358487>.
9. Griggs, C.L., Schneider, J.C., Kazis, L.E., and Ryan, C.M. *Patient-reported Outcome Measures: A Stethoscope for the Patient History*. *Ann Surg*, 2017. 265(6): p. 1066-1067. <https://www.ncbi.nlm.nih.gov/pubmed/28134680>.
10. Childs, J.D., Cleland, J.A., Elliott, J.M., Teyhen, D.S., Wainner, R.S., Whitman, J.M., Sopky, B.J., Godges, J.J., Flynn, T.W., and American Physical Therapy, A. *Neck pain: Clinical practice guidelines linked to the International Classification of Functioning, Disability, and Health from the Orthopedic Section of the American Physical Therapy Association*. *J Orthop Sports Phys Ther*, 2008. 38(9): p. A1-A34.
<https://www.ncbi.nlm.nih.gov/pubmed/18758050>.
11. Blanpied, P.R., Gross, A.R., Elliott, J.M., Devaney, L.L., Clewley, D., Walton, D.M., Sparks, C., and Robertson, E.K. *Neck Pain: Revision 2017*. *J Orthop Sports Phys Ther*, 2017. 47(7): p. A1-A83.
<https://www.ncbi.nlm.nih.gov/pubmed/28666405>.
12. National Quality Forum. *Patient Reported Outcomes (PROs) in Performance Measurement*. 2013.
<http://www.qualityforum.org/WorkArea/linkit.aspx?LinkIdentifier=id&ItemID=72537>.

COPYRIGHT:

THE MEASURES AND SPECIFICATIONS ARE PROVIDED "AS IS" WITHOUT WARRANTY OF ANY KIND.

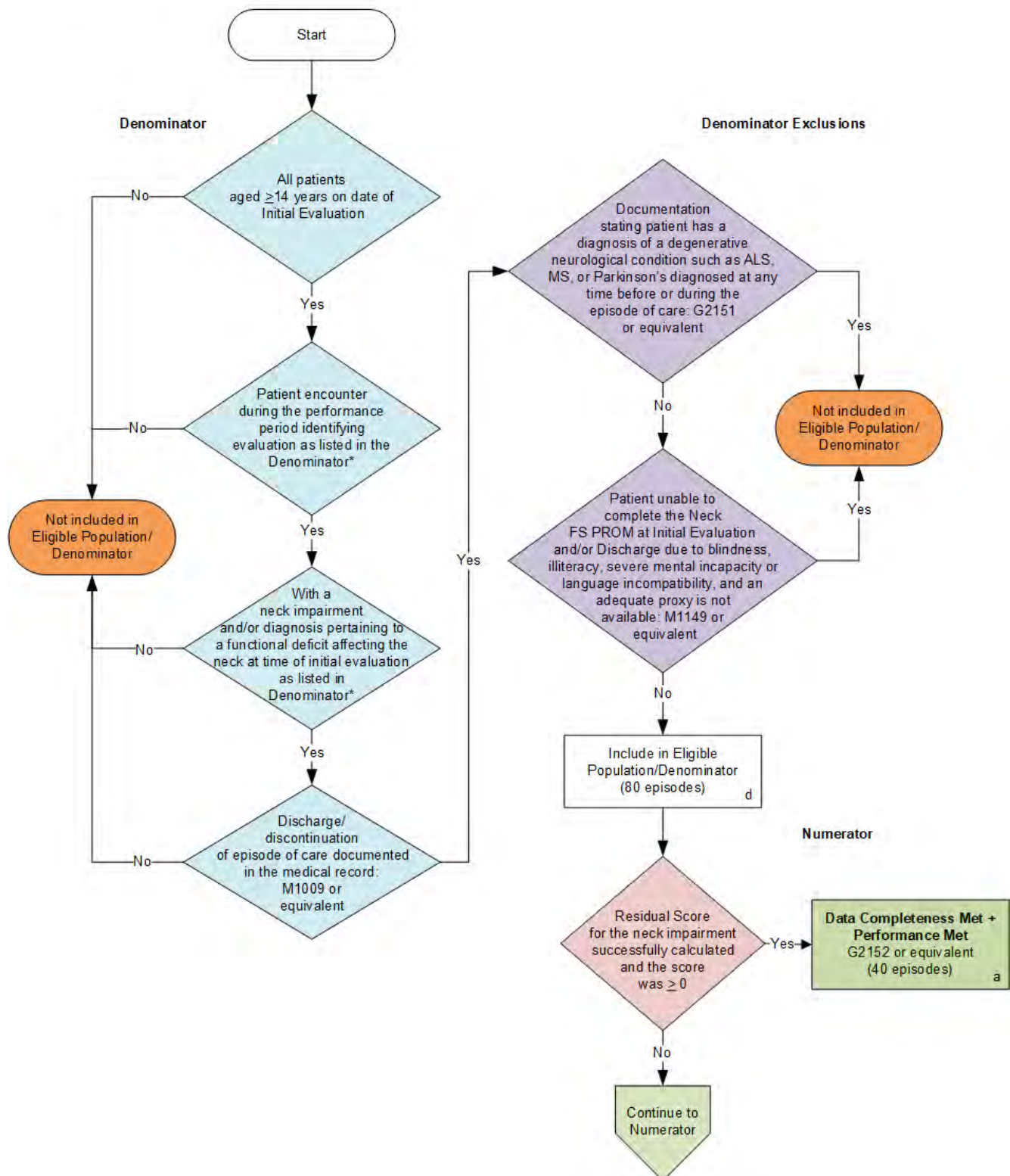
© 2024 Net Health Systems, Inc. All Rights Reserved

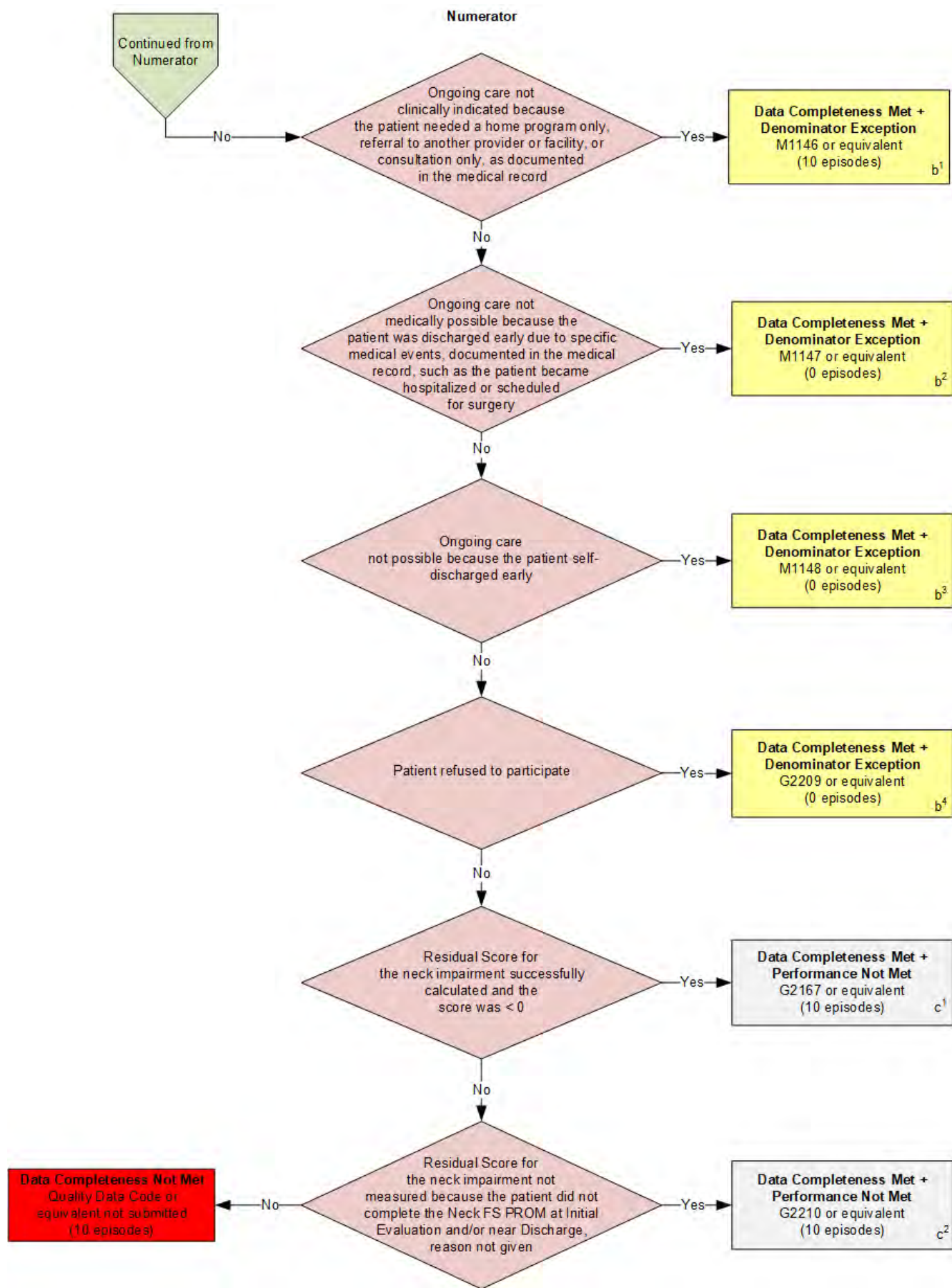
Net Health Systems, Inc. disclaims all liability for use or accuracy of any Current Procedural Terminology (CPT®) or other coding contained in the specifications.

CPT® contained in the Measures specifications is copyright 2004-2025 American Medical Association. ICD-10 is copyright 2025 World Health Organization. All Rights Reserved.

2026 Clinical Quality Measure Flow for Quality ID #478: Functional Status Change for Patients with Neck Impairments

Disclaimer: Refer to the measure specification for specific coding and instructions to submit this measure.





SAMPLE CALCULATIONS

Data Completeness=

$$\frac{\text{Performance Met (a=40)} + \text{Denominator Exception (b}^1\text{+b}^2\text{+b}^3\text{+b}^4\text{=10)} + \text{Performance Not Met (c}^1\text{+c}^2\text{=20)}}{\text{Eligible Population / Denominator (d=80 episodes)}} = \frac{70 \text{ episodes}}{80 \text{ episodes}} = 87.50\%$$

Performance Rate=

$$\frac{\text{Performance Met (a=40 episodes)}}{\text{Data Completeness Numerator (70 episodes) - Denominator Exception (b}^1\text{+b}^2\text{+b}^3\text{+b}^4\text{=10 episodes)}} = \frac{40 \text{ episodes}}{60 \text{ episodes}} = 66.67\%$$

*See the posted measure specification for specific coding and instructions to submit this measure.

NOTE: Submission Frequency: Episode

CPT only copyright 2025 American Medical Association. All rights reserved.
The measure diagrams were developed by CMS as a supplemental resource to be used in conjunction with the measure specifications. They should not be used alone or as a substitution for the measure specification.

v10

2026 Clinical Quality Measure Flow Narrative for Quality ID #478:
Functional Status Change for Patients with Neck Impairments

Disclaimer: Refer to the measure specification for specific coding and instructions to submit this measure.

1. Start with Denominator
2. Check *All patients aged greater than or equal to 14 years on date of Initial Evaluation.*
 - a. If *All patients aged greater than or equal to 14 years on date of Initial Evaluation* equals No, do not include in *Eligible Population/Denominator*. Stop processing.
 - b. If *All patients aged greater than or equal to 14 years on date of Initial Evaluation* equals Yes, proceed to check *Patient encounter during the performance period identifying evaluation as listed in the Denominator**.
3. Check *Patient encounter during the performance period identifying evaluation as listed in the Denominator**.
 - a. If *Patient encounter during the performance period identifying evaluation as listed in the Denominator** equals No, do not include in *Eligible Population/Denominator*. Stop processing.
 - b. If *Patient encounter during the performance period identifying evaluation as listed in the Denominator** equals Yes, proceed to *With a neck impairment and/or diagnosis pertaining to a functional deficit affecting the neck at time of initial evaluation as listed in Denominator**.
4. Check *With a neck impairment and/or diagnosis pertaining to a functional deficit affecting the neck at time of initial evaluation as listed in Denominator**.
 - a. If *With a neck impairment and/or diagnosis pertaining to a functional deficit affecting the neck at time of initial evaluation as listed in Denominator** equals No, do not include in *Eligible Population/Denominator*. Stop processing.
 - b. If *With a neck impairment and/or diagnosis pertaining to a functional deficit affecting the neck at time of initial evaluation as listed in Denominator** equals Yes, proceed to check *Discharge/discontinuation of episode of care documented in the medical record*.
5. Check *Discharge/discontinuation of episode of care documented in the medical record*.
 - a. If *Discharge/discontinuation of episode of care documented in the medical record* equals No, do not include in *Eligible Population/Denominator*. Stop processing.
 - b. If *Discharge/discontinuation of episode of care documented in the medical record* equals Yes, proceed to check *Documentation stating patient has a diagnosis of a degenerative neurological condition such as ALS, MS, or Parkinson's diagnosed at any time before or during the episode of care*.
6. Check *Documentation stating patient has a diagnosis of a degenerative neurological condition such as ALS, MS, or Parkinson's diagnosed at any time before or during the episode of care*.
 - a. If *Documentation stating patient has a diagnosis of a degenerative neurological condition such as ALS, MS, or Parkinson's diagnosed at any time before or during the episode of care* equals Yes, do not include in *Eligible Population/Denominator*. Stop processing.
 - b. If *Documentation stating patient has a diagnosis of a degenerative neurological condition such as ALS, MS, or Parkinson's diagnosed at any time before or during the episode of care* equals No, check *Patient unable to complete the Neck FS PROM at Initial Evaluation and/or Discharge due to blindness, illiteracy, severe mental incapacity or language incompatibility, and an adequate proxy is not available*.

7. Check *Patient unable to complete the Neck FS PROM at Initial Evaluation and/or Discharge due to blindness, illiteracy, severe mental incapacity or language incompatibility, and an adequate proxy is not available.*
 - a. If *Patient unable to complete the Neck FS PROM at Initial Evaluation and/or Discharge due to blindness, illiteracy, severe mental incapacity or language incompatibility, and an adequate proxy is not available* equals Yes, do not include in *Eligible Population/Denominator*. Stop processing.
 - b. If *Patient unable to complete the Neck FS PROM at Initial Evaluation and/or Discharge due to blindness, illiteracy, severe mental incapacity or language incompatibility, and an adequate proxy is not available* equals No, include in *Eligible Population/Denominator*.
8. Denominator Population
 - Denominator Population is all Eligible Episodes in the Denominator. Denominator is represented as Denominator in the Sample Calculation listed at the end of this document. Letter d equals 80 episodes in the Sample Calculation.
9. Start Numerator
10. Check *Residual Score for the neck impairment successfully calculated and the score was greater than or equal to 0.*
 - a. If *Residual Score for the neck impairment successfully calculated and the score was greater than or equal to 0* equals Yes, include in *Data Completeness Met and Performance Met*.
 - *Data Completeness Met and Performance Met* letter is represented in the Data Completeness and Performance Rate in the Sample Calculation listed at the end of this document. Letter a equals 40 episodes in the Sample Calculation.
 - b. If *Residual Score for the neck impairment successfully calculated and the score was greater than or equal to 0* equals No, proceed to check *Ongoing care not clinically indicated because the patient needed a home program only, referral to another provider or facility, or consultation only, as documented in the medical record.*
11. Check *Ongoing care not clinically indicated because the patient needed a home program only, referral to another provider or facility, or consultation only, as documented in the medical record.*
 - a. If *Ongoing care not clinically indicated because the patient needed a home program only, referral to another provider or facility, or consultation only, as documented in the medical record* equals Yes, include in *Data Completeness Met and Denominator Exception*.
 - *Data Completeness Met and Denominator Exception* letter is represented the Data Completeness and Performance Rate in the Sample Calculation listed at the end of this document. Letter b¹ equals 10 episodes in the Sample Calculation.
 - b. If *Ongoing care not clinically indicated because the patient needed a home program only, referral to another provider or facility, or consultation only, as documented in the medical record* equals No, proceed to check *Ongoing care not medically possible because the patient was discharged early due to specific medical events, documented in the medical record, such as the patient became hospitalized or scheduled for surgery.*
12. Check *Ongoing care not medically possible because the patient was discharged early due to specific medical events, documented in the medical record, such as the patient became hospitalized or scheduled for surgery.*

- a. If *Ongoing care not medically possible because the patient was discharged early due to specific medical events, documented in the medical record, such as the patient became hospitalized or scheduled for surgery* equals Yes, include in *Data Completeness Met and Denominator Exception*.
 - *Data Completeness Met and Denominator Exception* letter is represented in the Data Completeness and Performance Rate in the Sample Calculation listed at the end of this document. Letter b² equals 0 episodes in the Sample Calculation.
 - b. If *Ongoing care not medically possible because the patient was discharged early due to specific medical events, documented in the medical record, such as the patient became hospitalized or scheduled for surgery* equals No, Check *Ongoing care not possible because the patient self-discharged early*.
13. Check *Ongoing care not possible because the patient self-discharged early*.
- a. If *Ongoing care not possible because the patient self-discharged early* equals Yes, include in *Data Completeness Met and Denominator Exception*.
 - *Data Completeness Met and Denominator Exception* letter is represented in the Data Completeness and Performance Rate in the Sample Calculation listed at the end of this document. Letter b³ equals 0 episodes in the Sample Calculation.
 - b. If *Ongoing care not possible because the patient self-discharged early* equals No, proceed to check *Patient refused to participate*.
14. Check *Patient refused to participate*.
- a. If *Patient refused to participate* equals Yes, include in *Data Completeness Met and Denominator Exception*.
 - *Data Completeness Met and Denominator Exception* letter is represented in the Data Completeness and Performance Rate in the Sample Calculation listed at the end of this document. Letter b⁴ equals 0 episodes in the Sample Calculation.
 - b. If *Patient refused to participate* equals No, proceed to check *Residual Score for the neck impairment successfully calculated and the score was less than 0*.
15. Check *Residual Score for the neck impairment successfully calculated and the score was less than 0*.
- a. If *Residual Score for the neck impairment successfully calculated and the score was less than 0* equals Yes, include in *Data Completeness Met and Performance Not Met*.
 - *Data Completeness Met and Performance Not Met* letter is represented in the Data Completeness in the Sample Calculation listed at the end of this document. Letter c¹ equals 10 episodes in the Sample Calculation.
 - b. If *Residual Score for the neck impairment successfully calculated and the score was less than 0* equals No, proceed to check *Residual Score for the neck impairment not measured because the patient did not complete the Neck FS PROM at Initial Evaluation and/or Discharge, reason not given*.
16. Check *Residual Score for the neck impairment not measured because the patient did not complete the Neck FS PROM at Initial Evaluation and/or Discharge, reason not given*.
- a. If *Residual Score for the neck impairment not measured because the patient did not complete the Neck FS PROM at Initial Evaluation and/or Discharge, reason not given* equals Yes, include in *Data Completeness Met and Performance Not Met*.

- *Data Completeness Met and Performance Not Met* letter is represented in the Data Completeness in the Sample Calculation listed at the end of this document. Letter c² equals 10 episodes in the Sample Calculation.
- b. *If Residual Score for the neck impairment not measured because the patient did not complete the Neck FS PROM at Initial Evaluation and/or Discharge, reason not given equals No, include in Data Completeness Not Met.*

17. Check *Data Completeness Not Met*:

- If *Data Completeness Not Met*, the Quality Data Code or equivalent was not submitted. 10 episodes have been subtracted from Data Completeness Numerator in the Sample Calculation.

Sample Calculations

Data Completeness equals Performance Met (a equals 40 episodes) plus Denominator Exception (b¹ plus b² plus b³ plus b⁴ equals 10 episodes) plus Performance Not Met (c¹ plus c² equals 20 episodes) divided by Eligible Population/Denominator (d equals 80 episodes). All equals 70 episodes divided by 80 episodes. All equals 87.50 percent.

Performance Rate equals Performance Met (a equals 40 episodes) divided by Data Completeness Numerator (70 episodes) minus Denominator Exception (b¹ plus b² plus b³ plus b⁴ equals 10 episodes). All equals 40 episodes divided by 60 episodes. All equals 66.67 percent.

*See the posted measure specification for specific coding and instructions to submit this measure.

NOTE: Submission Frequency: Episode

The measure diagrams were developed by CMS as a supplemental resource to be used in conjunction with the measure specifications. They should not be used alone or as a substitution for the measure specification.