

Quality ID #477: Multimodal Pain Management

2026 COLLECTION TYPE:

MERIT-BASED INCENTIVE PAYMENT SYSTEM (MIPS) CLINICAL QUALITY MEASURE (QCM)

MEASURE TYPE:

Process – High Priority

DESCRIPTION:

Percentage of patients, aged 18 years and older, undergoing selected surgical procedures that were managed with multimodal pain management.

INSTRUCTIONS:

Reporting Frequency:

This measure is to be reported **each time** for denominator eligible cases as defined in the denominator criteria.

Intent and Clinician Applicability:

This measure is intended to reflect the quality of services provided for patients who undergo a selected surgical procedure. This measure may be submitted by Merit-based Incentive Payment System (MIPS) eligible clinicians who perform the quality actions as defined by the numerator based on the services provided and the measure-specific denominator coding.

Measure Strata and Performance Rates:

This measure contains one strata defined by a single submission criteria.

This measure produces a single performance rate.

Implementation Considerations:

For the purposes of MIPS implementation, this procedure measure is submitted each time a procedure is performed during the performance period.

Telehealth:

NOT TELEHEALTH ELIGIBLE: This measure **is not appropriate for nor applicable to the telehealth setting**. This measure is procedure based and therefore doesn't allow for the denominator criteria to be conducted via telehealth. It would be appropriate to remove these patients from the denominator eligible patient population. Telehealth eligibility is at the measure level for inclusion within the denominator eligible patient population and based on the measure specification definitions which are independent of changes to coding and/or billing practices.

Measure Submission:

The quality data codes listed do not need to be submitted by MIPS eligible clinicians, groups, or third party intermediaries that utilize this collection type for submissions; however, these codes may be submitted for those third party intermediaries that utilize Medicare Part B claims data. The coding provided to identify the measure criteria: Denominator or Numerator, may be an example of coding that could be used to identify patients that meet the intent of this clinical topic. When implementing this measure, please refer to the 'Reference Coding' section to determine if other codes or code languages that meet the intent of the criteria may also be used within the medical record to identify and/or assess patients. For more information regarding Application Programming Interface (API), please refer to the Quality Payment Program (QPP) website.

DENOMINATOR:

Patients, aged 18 years and older, who undergo selected surgical procedures.

DENOMINATOR NOTE:

Selected surgical procedures include both elective and urgent open and laparoscopic intraabdominal, spinal, pelvic, thoracic, breast, joint, head, neck, orthopedic and fracture repair surgeries.

Denominator Criteria (Eligible Cases):

Patients aged 18 years and older on date of encounter

AND

Patient procedures during performance period (CPT): 00102, 00120, 00160, 00162, 00172, 00174, 00190, 00222, 00300, 00320, 00402, 00404, 00406, 00450, 00470, 00472, 00500, 00528, 00529, 00539, 00540, 00541, 00542, 00546, 00548, 00600, 00620, 00625, 00626, 00630, 00670, 00700, 00730, 00750, 00752, 00754, 00756, 00770, 00790, 00792, 00794, 00797, 00800, 00820, 00830, 00832, 00840, 00844, 00846, 00848, 00860, 00862, 00864, 00865, 00866, 00870, 00872, 00873, 00880, 00902, 00906, 00910, 00912, 00914, 00916, 00918, 00920, 00940, 00942, 00948, 01120, 01160, 01170, 01173, 01210, 01214, 01215, 01220, 01230, 01360, 01392, 01400, 01402, 01480, 01482, 01484, 01486, 01630, 01634, 01636, 01638, 01740, 01742, 01744, 01760, 01830, 01832, 01961

AND NOT

DENOMINATOR EXCLUSION:

Emergent cases: M1142

NUMERATOR:

Patients for whom multimodal pain management is administered in the perioperative period from 6 hours prior to anesthesia start time until discharged from the post-anesthesia care unit.

Definition:

Multimodal pain management – is defined as the use of two or more drugs and/or interventions, NOT including systemic opioids, that act by different mechanisms for providing analgesia. These drugs and/or interventions can be administered via the same route or by different routes. Opioids may be administered for pain relief when indicated but will not count toward this measure.

NUMERATOR NOTE:

Documentation of qualifying medications or interventions provided from six hours prior to anesthesia start time through post-anesthesia care unit discharge count toward meeting the numerator.

Numerator Options:

<u>OR</u>	Performance Met:	Multimodal pain management was used (G2148)
	Denominator Exception:	Documentation of medical reason(s) for not using multimodal pain management (e.g., allergy to multiple classes of analgesics, intubated patient, hepatic failure, patient reports no pain during PACU stay, other medical reason(s)) (G2149)
<u>OR</u>	Performance Not Met:	Multimodal pain management was not used (G2150)

RATIONALE:

Besides providing anesthesia care in the operating room, anesthesiologists are dedicated to providing the best perioperative pain management in order to improve patients' function and facilitate rehabilitation after surgery. In the past, pain management was limited to the use of opioids (also called narcotics). Opioids provide analgesia primarily through a unitary mechanism, and just adding more opioids does not usually lead to better pain control or improve outcomes. In fact, opioids are responsible for a host of side effects that can be a threat to life, and increasing rates of complications after surgery can be attributed to the overuse and abuse of opioids. In 2012, the American Society of Anesthesiologists (ASA) published its guidelines for acute pain management in the perioperative setting (1), and ASA along with the American Society of Regional Anesthesia and Pain Medicine (ASRA) and American Pain Society

collaborated on the 2016 clinical practice guidelines for the management of postoperative pain (2). These documents endorse the routine use of “multimodal analgesia” which means employing multiple classes of pain medications or therapies, working with different mechanisms of action, in the treatment of acute pain instead of relying on opioids alone.

While opioids may continue to be important pain medications, they must be combined with other classes of medications known to prevent and help relieve postoperative pain unless contraindicated. The list includes but is not limited to:

- **Non-steroidal anti-inflammatory drugs (NSAIDs):** Examples include ibuprofen, diclofenac, ketorolac, celecoxib, nabumetone. NSAIDs act on the prostaglandin system peripherally and work to decrease inflammation.
- **NMDA antagonists:** When administered in low dose, ketamine, magnesium, and other NMDA antagonists act on the N-methyl-D-aspartate receptors in the central nerve system to decrease acute pain and hyperalgesia.
- **Acetaminophen:** Acetaminophen acts on central prostaglandin synthesis and provides pain relief through multiple mechanisms.
- **Gabapentinoids:** Examples include gabapentin and pregabalin. These medications are membrane stabilizers that essentially decrease nerve firing. Physicians should consider recent literature and applicable guidelines on judicious use of gabapentinoids, including those related to patients who are currently taking gabapentinoids.
- **Regional block:** The ASA and ASRA also strongly recommend the use of target-specific local anesthetic applications in the form of regional analgesic techniques as part of the multimodal analgesic protocol whenever indicated.
- **Steroids:** Dexamethasone during surgery has been shown to decrease pain and opioid requirements.
- **Local infiltration analgesia:** Injection of local anesthetic in or around the surgical site by the surgeon is an example.
- **Systemic lidocaine infusion:** Lidocaine administered by intravenous infusion represents an example of multimodal analgesia.

CLINICAL RECOMMENDATION STATEMENTS:

2012 ASA Practice Guidelines for Acute Pain Management in the Perioperative Setting

“Multimodal techniques for pain management include the administration of two or more drugs that act by different mechanisms for providing analgesia. These drugs may be administered via the same route or by different routes.”

“Whenever possible, anesthesiologists should use multimodal pain management therapy. Central regional blockade with local anesthetics should be considered. Unless contraindicated, patients should receive an around-the-clock regimen of COXIBs, NSAIDs, or acetaminophen. Dosing regimens should be administered to optimize efficacy while minimizing the risk of adverse events. The choice of medication, dose, route, and duration of therapy should be individualized.”

2016 ASRA Guidelines on the Management of Postoperative Pain

“The panel recommends that clinicians offer multi-modal analgesia, or the use of a variety of analgesic medications and techniques combined with non-pharmacological interventions, for the treatment of postoperative pain in children and adults (strong recommendation, high-quality evidence).”

2022 A multisociety organizational consensus process to define guiding principles for acute perioperative pain management

Principle 3: Clinicians should offer multimodal analgesia, or the use of a variety of analgesic medications and techniques combined with non-pharmacological interventions, for the treatment of postoperative pain in adults.

REFERENCES:

Apfelbaum, J. L., et al. (2012). Practice guidelines for acute pain management in the perioperative setting: An updated report by the American Society of Anesthesiologists Task Force on Acute Pain Management. *Anesthesiology*, 116(2), 248–273.

Chou, R., Gordon, D. B., de Leon-Casasola, O. A., Rosenberg, J. M., Bickler, S., Brennan, T., Carter, T., Cassidy, C. L., Chittenden, E. H., Degenhardt, E., Griffith, S., Manworren, R., McCarberg, B., Montgomery, R., Murphy, J., Perkal, M. F., Suresh, S., Sluka, K., Strassels, S., Thirlby, R., Viscusi, E., Walco, G. A., Warner, L., Weisman, S. J., & Wu, C. L. (2016). Management of postoperative pain: A clinical practice guideline from the American Pain Society, the American Society of Regional Anesthesia and Pain Medicine, and the American Society of Anesthesiologists' Committee on Regional Anesthesia, Executive Committee, and Administrative Council. *The Journal of Pain*, 17(2), 131–157. <https://doi.org/10.1016/j.jpain.2015.12.008> Erratum: *The Journal of Pain*, 17(4), 508–510. <https://doi.org/10.1016/j.jpain.2016.02.002>

Mariano, E. R., Dickerson, D. M., Szokol, J. W., Harned, M., Mueller, J. T., Philip, B. K., Baratta, J. L., Gulur, P., Robles, J., Schroeder, K. M., Wyatt, K. E. K., Schwalb, J. M., Schwenk, E. S., Wardhan, R., Kim, T. S., Higdon, K. K., Krishnan, D. G., Shilling, A. M., Schwartz, G., Wiechmann, L., Doan, L. V., Elkassabany, N. M., Yang, S. C., Muse, I. O., Eloy, J. D., Mehta, V., Shah, S., Johnson, R. L., Englesbe, M. J., Kallen, A., Mukkamala, S. B., Walton, A., & Buvanendran, A. (2022). A multisociety organizational consensus process to define guiding principles for acute perioperative pain management. *Regional Anesthesia & Pain Medicine*, 47(2), 118–127. <https://doi.org/10.1136/rapm-2021-103083>

COPYRIGHT:

This performance measure (measure) is not a clinical guideline, does not establish a standard of medical care, and has not been tested for all potential applicants. The American Society of Anesthesiologists (ASA) shall not be responsible for any use of the measure.

The measure, while copyrighted, can be reproduced and distributed, without modification, for non-commercial purposes, e.g., use by health care providers in connection with their practices.

Commercial use is defined as the sale, license, or distribution of the measure for commercial gain, or incorporation of the measure into a product or service that is sold, licensed or distributed for commercial gain.

ASA encourages use of the measure by other health care professionals, where appropriate. **Please contact ASA at [ASA Email \(gra@asahq.org\)](mailto:gra@asahq.org) before using information contained in this document to ensure proper permissions are obtained.**

Limited proprietary coding is contained in the measure specifications for convenience. Users of the proprietary code sets should obtain all necessary licenses from the owners of these code sets. ASA disclaims all liability for use or accuracy of any coding contained in the specifications.

The five character codes and descriptors included in the measure(s) are from Current Procedural Terminology (CPT®), copyright 2024 by the American Medical Association (AMA). Use of CPT in measure(s) is limited to Non- Commercial Use. Any commercial use of CPT beyond fair use requires a license from the AMA. **CPT is provided “AS IS” without any liability to the AMA of any kind.**

The responsibility for the content of this measure is with the measure developer and no endorsement by the AMA is intended or should be implied. The AMA disclaims responsibility for any liability attributable or related to any use, nonuse or interpretation of information contained in this measure, including CPT. The AMA does not practice medicine. The AMA assumes no liability for data contained or not contained herein. Any use of CPT outside of this measure should refer to the most current CPT publication. Applicable FARS/DFARS Restrictions apply to U.S. Government Use.

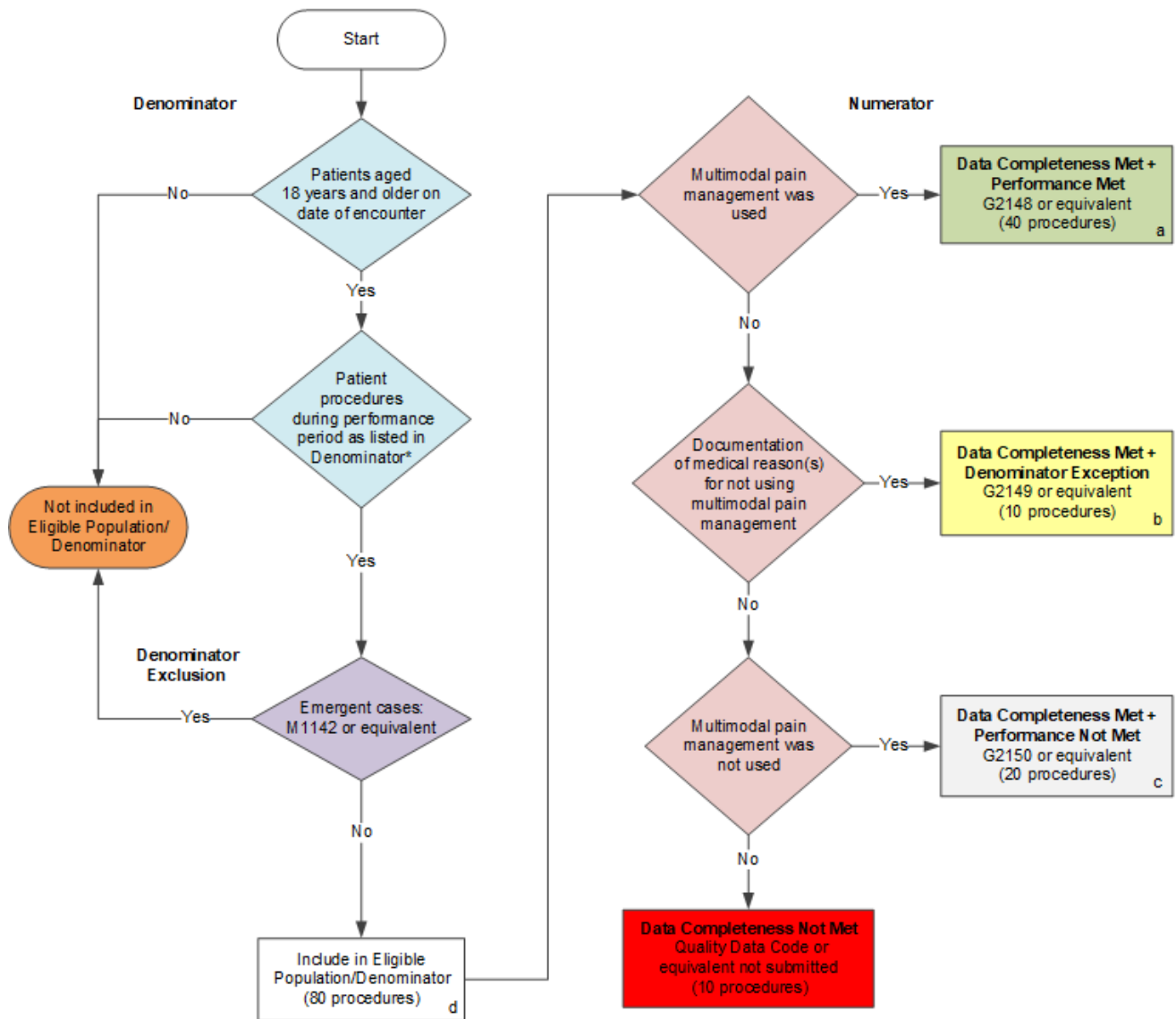
THE MEASURE AND SPECIFICATIONS ARE PROVIDED “AS IS” WITHOUT WARRANTY OF ANY KIND.

© 2025 American Society of Anesthesiologists. All Rights Reserved.

CPT® contained in the Measure specifications is copyright 2004-2024 American Medical Association. All Rights Reserved.

2026 Clinical Quality Measure Flow for Quality ID #477: Multimodal Pain Management

Disclaimer: Refer to the measure specification for specific coding and instructions to submit this measure.



SAMPLE CALCULATIONS

Data Completeness=

$$\frac{\text{Performance Met (a=40 procedures)} + \text{Denominator Exception (b=10 procedures)} + \text{Performance Not Met (c=20 procedures)}}{\text{Eligible Population / Denominator (d=80 procedures)}} = \frac{70 \text{ procedures}}{80 \text{ procedures}} = 87.50\%$$

Performance Rate=

$$\frac{\text{Performance Met (a=40 procedures)}}{\text{Data Completeness Numerator (70 procedures) - Denominator Exception (b=10 procedures)}} = \frac{40 \text{ procedures}}{60 \text{ procedures}} = 66.67\%$$

*See the posted measure specification for specific coding and instructions to submit this measure.

NOTE: Submission Frequency: Procedure

CPT only copyright 2025 American Medical Association. All rights reserved. The measure diagrams were developed by CMS as a supplemental resource to be used in conjunction with the measure specifications. They should not be used alone or as a substitution for the measure specification.

v10

**2026 Clinical Quality Measure Flow Narrative for Quality ID #477:
Multimodal Pain Management**

Disclaimer: Refer to the measure specification for specific coding and instructions to submit this measure.

1. Start with Denominator
2. Check *Patients aged 18 years and older on date of encounter*:
 - a. If *Patients aged 18 years and older on date of encounter* equals No, do not include in *Eligible Population/Denominator*. Stop processing.
 - b. If *Patients aged 18 years and older on date of encounter* equals Yes, proceed to check *Patient procedures during reporting period as listed in Denominator**.
3. Check *Patient procedures during performance period as listed in Denominator**:
 - a. If *Patient procedures during performance period as listed in Denominator** equals No, do not include in *Eligible Population/Denominator*. Stop processing.
 - b. If *Patient procedures during performance period as listed in Denominator** equals Yes, proceed to check *Emergent cases*.
4. Check *Emergent cases*:
 - a. If *Emergent cases* equals Yes, do not include in *Eligible Population/Denominator*. Stop processing.
 - b. If *Emergent cases* equals No, include in *Eligible Population/Denominator*.
5. Denominator Population
 - a. Denominator Population is all Eligible Procedures in the Denominator. Denominator is represented as Denominator in the Sample Calculation listed at the end of this document. Letter d equals 80 procedures in the Sample Calculation.
6. Start Numerator
7. Check *Multimodal pain management was used*:
 - a. If *Multimodal pain management was used* equals Yes, include in *Data Completeness Met and Performance Met*.
 - *Data Completeness Met and Performance Met* letter is represented in the Data Completeness and Performance Rate in the Sample Calculation listed at the end of this document. Letter a equals 40 procedures in the Sample Calculation.
 - b. If *Multimodal pain management was used* equals No, proceed to check *Documentation of medical reason(s) for not using multimodal pain management*.
8. Check *Documentation of medical reason(s) for not using multimodal pain management*:
 - a. If *Documentation of medical reason(s) for not using multimodal pain management* equals Yes, include in *Data Completeness Met and Denominator Exception*.
 - *Data Completeness Met and Denominator Exception* letter is represented in the Data Completeness and Performance Rate in the Sample Calculation listed at the end of this document. Letter b equals 10 procedures in the Sample Calculation.

- b. If *Documentation of medical reason(s) for not using multimodal pain management* equals No, proceed to check *Multimodal pain management was not used*.
9. Check *Multimodal pain management was not used*:
- a. If *Multimodal pain management was not used* equals Yes, include in *Data Completeness Met and Performance Not Met*.
- *Data Completeness Met and Performance Not Met* letter is represented in the Data Completeness in the Sample Calculation listed at the end of this document. Letter c equals 20 procedures in the Sample Calculation.
- b. If *Multimodal pain management was not used* equals No, proceed to check *Data Completeness Not Met*.
10. Check *Data Completeness Not Met*:
- If *Data Completeness Not Met*, the Quality Data Code or equivalent was not submitted. 10 procedures have been subtracted from Data Completeness Numerator in the Sample Calculation.

Sample Calculations

Data Completeness equals Performance Met (a equals 40 procedures) plus Denominator Exception (b equals 10 procedures) plus Performance Not Met (c equals 20 procedures) divided by Eligible Population / Denominator (d equals 80 procedures). All equals 70 procedures divided by 80 procedures. All equals 87.50 percent.

Performance Rate equals Performance Met (a equals 40 procedures) divided by Data Completeness Numerator (70 procedures) minus Denominator Exception (b equals 10 procedures). All equals 40 procedures divided by 60 procedures. All equals 66.67 percent.

*See the posted measure specification for specific coding and instructions to submit this measure

NOTE: Submission Frequency: Procedure

The measure diagrams were developed by CMS as a supplemental resource to be used in conjunction with the measure specifications. They should not be used alone or as a substitution for the measure specification.