

Quality ID #465: Uterine Artery Embolization Technique: Documentation of Angiographic Endpoints and Interrogation of Ovarian Arteries

2026 COLLECTION TYPE:

MERIT-BASED INCENTIVE PAYMENT SYSTEM (MIPS) CLINICAL QUALITY MEASURE (CQM)

MEASURE TYPE:

Process – High Priority

DESCRIPTION:

The percentage of patients with documentation of angiographic endpoints of embolization AND the documentation of embolization strategies in the presence of unilateral or bilateral absent uterine arteries.

INSTRUCTIONS:

Reporting Frequency:

This measure is to be submitted each time a denominator eligible procedure as defined in the denominator criteria is performed.

Intent and Clinician Applicability:

This measure is intended to reflect the quality of services provided for patients who undergo a procedure for uterine artery embolization. This measure may be submitted by Merit-based Incentive Payment System (MIPS) eligible clinicians who perform the quality actions as defined by the numerator based on the services provided and the measure-specific denominator coding.

Measure Strata and Performance Rates:

This measure contains one strata defined by a single submission criteria.

This measure produces a single performance rate.

Implementation Considerations:

For the purposes of MIPS implementation, this procedure measure is submitted each time a procedure is performed during the performance period.

Telehealth:

NOT TELEHEALTH ELIGIBLE: This measure is not appropriate for nor applicable to the telehealth setting. This measure is procedure based and therefore doesn't allow for the denominator criteria to be conducted via telehealth. It would be appropriate to remove these patients from the denominator eligible patient population. Telehealth eligibility is at the measure level for inclusion within the denominator eligible patient population and based on the measure specification definitions which are independent of changes to coding and/or billing practices.

Measure Submission:

The quality data codes listed do not need to be submitted by MIPS eligible clinicians, groups, or third party intermediaries that utilize this collection type for submissions; however, these codes may be submitted for those third party intermediaries that utilize Medicare Part B claims data. The coding provided to identify the measure criteria: Denominator or Numerator, may be an example of coding that could be used to identify patients that meet the intent of this clinical topic. When implementing this measure, please refer to the 'Reference Coding' section to determine if other codes or code languages that meet the intent of the criteria may also be used within the medical record to identify and/or assess patients. For more information regarding Application Programming Interface (API), please refer to the Quality Payment Program (QPP) website.

DENOMINATOR:

All patients undergoing uterine artery embolization for leiomyomas and/or adenomyosis.

Denominator Criteria (Eligible Cases):

All patients, regardless of age

AND

Diagnosis for leiomyomas or adenomyosis (ICD-10-CM): D25.0, D25.1, D25.2, D25.9, N80.00, N80.01, N80.02, N80.03

AND

Patient procedure during the performance period (CPT): 37243

NUMERATOR:

Number of patients undergoing uterine artery embolization for symptomatic leiomyomas and/or adenomyosis in whom embolization endpoints are documented separately for each embolized vessel AND ovarian artery angiography or embolization performed in the presence of variant uterine artery anatomy.

Definitions:

Embolization Endpoints –

- Complete stasis (static contrast column for at least 5 heartbeats)
- Near-stasis (not static, but contrast visible for at least 5 heartbeats)
- Slowed flow (contrast visible for fewer than 5 heartbeats)
- Normal velocity flow with pruning of distal vasculature
- Other [specify]
- Not documented

Variant uterine artery anatomy – Treatment strategy:

- Not applicable – Normal uterine artery anatomy
- Ovarian artery angiography
- Ovarian artery embolization
- Abdominal aortic angiography
- No additional angiography or embolization performed

Numerator Options:

Performance Met:

Embolization endpoints are documented separately for each embolized vessel AND ovarian artery angiography or embolization performed in the presence of variant uterine artery anatomy (**G9962**)

OR

Performance Not Met:

Embolization endpoints are not documented separately for each embolized vessel OR ovarian artery angiography or embolization not performed in the presence of variant uterine artery anatomy (**G9963**)

RATIONALE:

The efficacy of uterine artery embolization is related to incomplete embolization. The two failure mechanisms that contribute are (1.) appropriate vessel selection but insufficient embolization and (2.) incomplete identification of uterine arterial supply. This measure ensures documentation of two important procedural aspects of uterine artery embolization, which are known to be associated with treatment efficacy: (1.) appropriate embolization endpoints achieved and (2.) delineation of all uterine arterial supply with embolization where possible.

Inadequate arterial embolization alone is a known cause of treatment failure.¹ The ovarian arteries often provide an alternate route of arterial supply to the uterus when the uterine artery is occluded or absent; however routine aortography is not recommended when conventional uterine artery anatomy is present.²

CLINICAL RECOMMENDATION STATEMENTS:

Consensus opinion quality improvement document from the Society of Interventional Radiology utilizing the Modified Delphi method, defining consensus as 80% Delphi participant agreement on a value or parameter.¹

REFERENCES:

1. Dariushnia SR et al. Quality Improvement Guidelines for Uterine Artery Embolization for Symptomatic leiomyomata. JVIR 2014; 25:1737-1747.
2. White AM et al. Patient radiation exposure during uterine fibroid embolization and the dose attributable to aortography. JVIR 2007; 18:573-576.

COPYRIGHT:

THE MEASURE AND SPECIFICATIONS ARE PROVIDED "AS IS" WITHOUT WARRANTY OF ANY KIND.

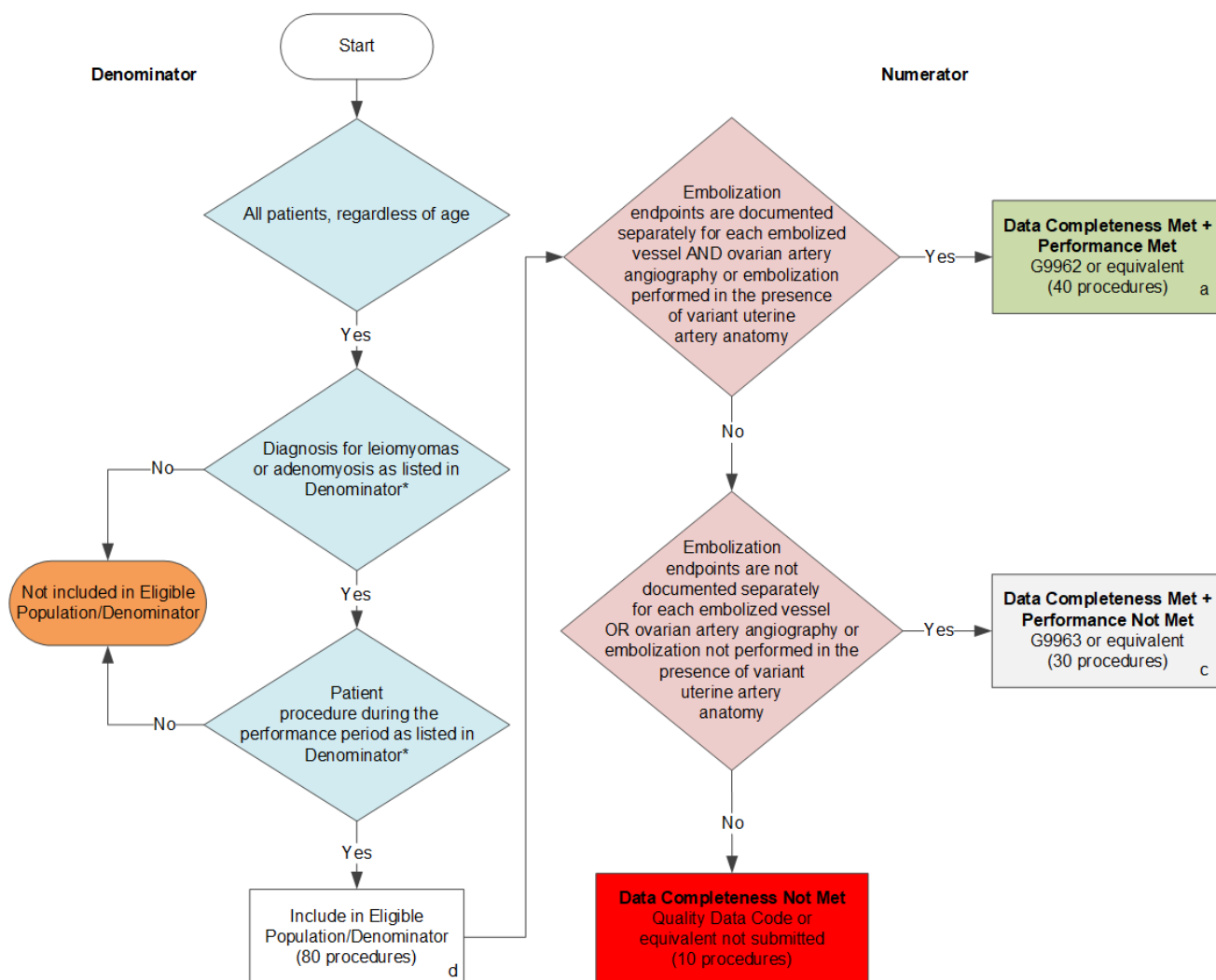
© 2025 Society of Interventional Radiology.

Limited proprietary coding is contained in the Measure specifications for user convenience. Users of proprietary code sets should obtain all necessary licenses from the owners of the code sets. Society of Interventional Radiology disclaims all liability for use or accuracy of any third party codes contained in the specifications.

CPT® contained in the Measure specifications is copyright 2004-2025 American Medical Association. LOINC® copyright 2004-2025 Regenstrief Institute, Inc. This material contains SNOMED Clinical Terms® (SNOMED CT®) copyright 2004-2025 International Health Terminology Standards Development Organisation. ICD-10 copyright 2025 World Health Organization. All Rights Reserved.

2026 Clinical Quality Measure Flow for Quality ID #465: Uterine Artery Embolization Technique: Documentation of Angiographic Endpoints and Interrogation of Ovarian Arteries

Disclaimer: Refer to the measure specification for specific coding and instructions to submit this measure.



SAMPLE CALCULATIONS

Data Completeness=

$$\frac{\text{Performance Met (a=40 procedures)} + \text{Performance Not Met (c=30 procedures)}}{\text{Eligible Population / Denominator (d=80 procedures)}} = \frac{70 \text{ procedures}}{80 \text{ procedures}} = 87.50\%$$

Performance Rate=

$$\frac{\text{Performance Met (a=40 procedures)}}{\text{Data Completeness Numerator (70 procedures)}} = \frac{40 \text{ procedures}}{70 \text{ procedures}} = 57.14\%$$

*See the posted measure specification for specific coding and instructions to submit this measure.

NOTE: Submission Frequency: Procedure

CPT only copyright 2025 American Medical Association. All rights reserved.
The measure diagrams were developed by CMS as a supplemental resource to be used in conjunction with the measure specifications. They should not be used alone or as a substitution for the measure specification.

v10

**2026 Clinical Quality Measure Flow Narrative for Quality ID #465:
Uterine Artery Embolization Technique: Documentation of Angiographic Endpoints
and Interrogation of Ovarian Arteries**

Disclaimer: Refer to the measure specification for specific coding and instructions to submit this measure.

1. Start with Denominator
2. Check *All patients regardless of age.*
3. Check *Diagnosis for leiomyomas or adenomyosis as listed in Denominator*:*
 - a. If *Diagnosis for leiomyomas or adenomyosis as listed in Denominator** equals No, do not include in *Eligible Population/Denominator*. Stop processing.
 - b. If *Diagnosis for leiomyomas or adenomyosis as listed in Denominator** equals Yes, proceed to check *Patient procedure during the performance period as listed in Denominator**.
4. Check *Patient procedure during the performance period as listed in Denominator*:*
 - a. If *Patient procedure during the performance period as listed in Denominator** equals No, do not include in *Eligible Population/Denominator*. Stop processing.
 - b. If *Patient procedure during the performance period as listed in Denominator** equals Yes, include in *Eligible Population/Denominator*.
5. Denominator Population:
 - Denominator Population is all Eligible Procedures in the Denominator. Denominator is represented as Denominator in the Sample Calculation listed at the end of this document. Letter d equals 80 procedures in the Sample Calculation.
6. Start Numerator
7. Check *Embolization endpoints are documented separately for each embolized vessel AND ovarian artery angiography or embolization performed in the presence of variant uterine artery anatomy:*
 - a. If *Embolization endpoints are documented separately for each embolized vessel AND ovarian artery angiography or embolization performed in the presence of variant uterine artery anatomy* equals Yes, include in *Data Completeness Met and Performance Met*.
 - *Data Completeness Met and Performance Met* letter is represented in the Data Completeness and Performance Rate in the Sample Calculation listed at the end of this document. Letter a equals 40 procedures in the Sample Calculation.
 - b. If *Embolization endpoints are documented separately for each embolized vessel AND ovarian artery angiography or embolization performed in the presence of variant uterine artery anatomy* equals No, proceed to check *Embolization endpoints are not documented separately for each embolized vessel OR ovarian artery angiography or embolization not performed in the presence of variant uterine artery anatomy*.
8. Check *Embolization endpoints are not documented separately for each embolized vessel OR ovarian artery angiography or embolization not performed in the presence of variant uterine artery anatomy:*

- a. If *Embolization endpoints are not documented separately for each embolized vessel OR ovarian artery angiography or embolization not performed in the presence of variant uterine artery anatomy* equals Yes, include in *Data Completeness Met and Performance Not Met*.

- *Data Completeness Met and Performance Not Met* letter is represented in the Data Completeness in the Sample Calculation listed at the end of this document. Letter c equals 30 procedures in the Sample Calculation.

- b. If *Embolization endpoints are not documented separately for each embolized vessel OR ovarian artery angiography or embolization not performed in the presence of variant uterine artery anatomy* equals No, proceed to check *Data Completeness Not Met*.

9. Check *Data Completeness Not Met*:

- If *Data Completeness Not Met*, the Quality Data Code or equivalent was not submitted. 10 procedures have been subtracted from the Data Completeness Numerator in the Sample Calculation.

Sample Calculations

Data Completeness equals Performance Met (a equals 40 procedures) plus Performance Not Met (c equals 30 procedures) divided by Eligible Population / Denominator (d equals 80 procedures). All equals 70 procedures divided by 80 procedures. All equals 87.50 percent.

Performance Rate equals Performance Met (a equals 40 procedures) divided by Data Completeness Numerator (70 procedures). All equals 40 procedures divided by 70 procedures. All equals 57.14 percent.

* See the posted measure specification for specific coding and instructions to submit this measure.

NOTE: Submission Frequency: Procedure

The measure diagrams were developed by CMS as a supplemental resource to be used in conjunction with the measure specifications. They should not be used alone or as a substitution for the measure specification.