

**Quality ID #332: Adult Sinusitis: Appropriate Choice of Antibiotic: Amoxicillin With or Without Clavulanate Prescribed for Patients with Acute Bacterial Sinusitis (Appropriate Use)**

**2026 COLLECTION TYPE:**

**MERIT-BASED INCENTIVE PAYMENT SYSTEM (MIPS) CLINICAL QUALITY MEASURE (COM)**

**MEASURE TYPE:**

Process – High Priority

**DESCRIPTION:**

Percentage of patients aged 18 years and older with a diagnosis of acute bacterial sinusitis that were prescribed amoxicillin, with or without clavulanate, as a first line antibiotic at the time of diagnosis.

**INSTRUCTIONS:**

**Reporting Frequency:**

This measure is to be submitted a minimum of once per performance period for denominator eligible cases as defined in the denominator criteria.

**Intent and Clinician Applicability:**

This measure is intended to reflect the quality of services provided for patients with a diagnosis of acute bacterial sinusitis. This measure may be submitted based on the actions of the submitting Merit-based Incentive Payment System (MIPS) eligible clinician who performs the quality action, as defined by the numerator, based on the services provided within measure- specific denominator coding.

**Measure Strata and Performance Rates:**

This measure contains one strata defined by a single submission criteria.

This measure produces a single performance rate.

**Implementation Considerations:**

For the purposes of MIPS implementation, this patient-process measure is submitted a minimum of once per patient during the performance period. The most advantageous quality data code will be used if the measure is submitted more than once.

**Telehealth:**

**TELEHEALTH ELIGIBLE:** This measure is appropriate for and applicable to the telehealth setting. Patient encounters conducted via telehealth using encounter code(s) found in the denominator encounter criteria are allowed for this measure. Therefore, if the patient meets all denominator criteria for a telehealth encounter, it would be appropriate to include them in the denominator eligible patient population. Telehealth eligibility is at the measure level for inclusion within the denominator eligible patient population and based on the measure specification definitions which are independent of changes to coding and/or billing practices.

**Measure Submission:**

The quality data codes listed do not need to be submitted by MIPS eligible clinicians, groups, or third party intermediaries that utilize this collection type for submissions; however, these codes may be submitted for those third party intermediaries that utilize Medicare Part B claims data. The coding provided to identify the measure criteria: Denominator or Numerator, may be an example of coding that could be used to identify patients that meet the intent of this clinical topic. When implementing this measure, please refer to the 'Reference Coding' section to determine if other codes or code languages that meet the intent of the criteria may also be used within the medical record to identify and/or assess patients. For more information regarding Application Programming Interface (API), please refer to the Quality Payment Program (QPP) website.

**DENOMINATOR:**

All patients aged 18 years and older with a diagnosis of acute bacterial sinusitis who are prescribed an antibiotic.

**Definition:**

**Acute Bacterial Rhinosinusitis (ABRS)** - Acute rhinosinusitis that is caused by, or is presumed to be caused by, bacterial infection. A clinician should diagnose ABRS when: (a) symptoms or signs of acute rhinosinusitis are present 10 days or more beyond the onset of upper respiratory symptoms, or (b) symptoms or signs of acute rhinosinusitis worsen within 10 days after an initial improvement (double worsening).

**Denominator Criteria (Eligible Cases):**

Patients aged ≥ 18 years on date of encounter

**AND**

**Diagnosis for acute sinusitis on date of encounter (ICD-10-CM):** J01.00, J01.01, J01.10, J01.11, J01.20, J01.21, J01.30, J01.31, J01.40, J01.41, J01.80, J01.81, J01.90, J01.91

**AND**

**Diagnosis for bacterial and infectious agents on date of encounter (ICD-10-CM):** B95.0, B95.1, B95.2, B95.3, B95.4, B95.5, B95.61, B95.62, B95.7, B95.8, B96.0, B96.1, B96.20, B96.21, B96.22, B96.23, B96.29, B96.3, B96.4, B96.5, B96.6, B96.7, B96.81, B96.82, B96.83, B96.89

**OR**

**Sinusitis caused by, or presumed to be caused by, bacterial infection:** G9364

**AND**

**Patient encounter during performance period (CPT):** 98002, 98003, 98006, 98007, 98010, 98011, 98014, 98015, 98016, 99202, 99203, 99204, 99205, 99212, 99213, 99214, 99215, 99281, 99282, 99283, 99284, 99285, 99304, 99305, 99306, 99307, 99308, 99309, 99310, 99341, 99342, 99344, 99345, 99347, 99348, 99349, 99350, 99424, 99491

**AND**

**Antibiotic regimen prescribed:** G9498

**NUMERATOR:**

Patients who were prescribed amoxicillin, with or without clavulanate, as a first line antibiotic at the time of diagnosis.

**Numerator Options:**

***Performance Met:***

Amoxicillin, with or without clavulanate, prescribed as a first line antibiotic at the time of diagnosis (**G9315**)

**OR**

***Denominator Exception:***

Amoxicillin, with or without clavulanate, not prescribed as first line antibiotic at the time of diagnosis for documented reason (**G9313**)

**OR**

***Performance Not Met:***

Amoxicillin, with or without clavulanate, not prescribed as first line antibiotic at the time of diagnosis, reason not given (**G9314**)

**RATIONALE:**

The rationale for antibiotic therapy of ABRS is to eradicate bacterial infection from the sinuses, hasten resolution of symptoms, and enhance disease-specific quality of life. Antibiotic therapy should be efficacious, cost-effective, and result in minimal side effects.

The justification for amoxicillin as first-line therapy for most patients with ABRS relates to its safety, efficacy, low cost, and narrow microbiologic spectrum. Consideration to prescribing amoxicillin-clavulanate for adults with ABRS is given to those at a high risk of being infected by an organism resistant to amoxicillin. Factors that would prompt clinicians to consider prescribing amoxicillin-clavulanate instead of amoxicillin include:

- Situations in which bacterial resistance is likely (e.g., antibiotic use in the past month; close contact with treated individuals, health care providers, or a health care environment; failure of prior antibiotic therapy; breakthrough infection despite prophylaxis; close contact with a child in a daycare facility; smoker or smoker in the family; high prevalence of resistant bacteria in community)
- Presence of moderate to severe infection (e.g., moderate to severe symptoms of ABRS; protracted symptoms of ABRS; frontal or sphenoidal sinusitis, history of recurrent ABRS)

- Presence of comorbidity or extremes of life (e.g., comorbid conditions including diabetes; chronic cardiac, hepatic, or renal disease; immunocompromised patient; age greater than 65 years)

The use of high-dose amoxicillin with clavulanate is recommended for adults with ABRS who are at a high risk of being infected with an amoxicillin-resistant organism. High-dose amoxicillin is preferred over standard-dose amoxicillin primarily to cover penicillin non susceptible (PNS) *S. pneumoniae*. This risk exists in those from geographic regions with high endemic rates (>10%) of invasive PNS *S. pneumoniae*, those with severe infection (e.g., evidence of systemic toxicity with fever of 39C (102F) or higher, and threat of suppurative complications), age >65 years, recent hospitalization, antibiotic use within the past month, or those who are immunocompromised.

#### **CLINICAL RECOMMENDATION STATEMENTS:**

The following evidence statements are extracted from the referenced clinical guidelines: AAO-HNS Sinusitis Guideline (2015) If a decision is made to treat ABRS with an antibiotic agent, the clinician should prescribe amoxicillin with or without clavulanate as first-line therapy for most adults.

*Recommendation based on randomized controlled trials with heterogeneity and non-inferiority design with a preponderance of benefit over harm.*

The purpose of this statement is to promote prescribing of antibiotics with known efficacy and safety for ABRS and to reduce prescribing of antibiotics with potentially inferior efficacy because of more limited coverage of the usual pathogens that cause ABRS in adults. A secondary goal is to promote cost-effective antibiotic therapy for ABRS. A quality improvement opportunity addressed by this guideline key action statement is discouraging initial prescribing of antibiotics other than amoxicillin, with or without clavulanate, that may have low efficacy or have comparable efficacy but more adverse events.

IDSA Clinical Practice Guideline for Acute Bacterial Rhinosinusitis in Children and Adults (2012)

Amoxicillin-clavulanate rather than amoxicillin alone is recommended as empiric antimicrobial therapy for ABRS in adults (weak, low).

Evidence for at least 1 critical outcome from observational studies, from RCTs with serious flaws or indirect evidence.

#### **REFERENCES:**

There are no sources in the current document.

#### **COPYRIGHT:**

The Measure is not a clinical guideline, does not establish a standard of medical care, and has not been tested for all potential applications.

The Measure, while copyrighted, can be reproduced and distributed, without modification, for noncommercial purposes, e.g., use by health care providers in connection with their practices. Commercial use is defined as the sale, license, or distribution of the Measure for commercial gain, or incorporation of the Measure into a product or service that is sold, licensed or distributed for commercial gain.

Commercial uses of the Measure require a license agreement between the user and the American Academy of Otolaryngology – Head and Neck Surgery Foundation (AAO-HNS Foundation). Neither the AAO-HNSF nor its members shall be responsible for any use of the Measures.

The PCPI's and AMA's significant past efforts and contributions to the development and updating of the Measures are acknowledged.

AAO-HNS Foundation is solely responsible for the review and enhancement ("Maintenance") of the Measure as of August 14, 2014.

AAO-HNS Foundation encourages use of the Measure by other health care professionals, where appropriate.

**THE MEASURE AND SPECIFICATIONS ARE PROVIDED "AS IS" WITHOUT WARRANTY OF ANY KIND.**

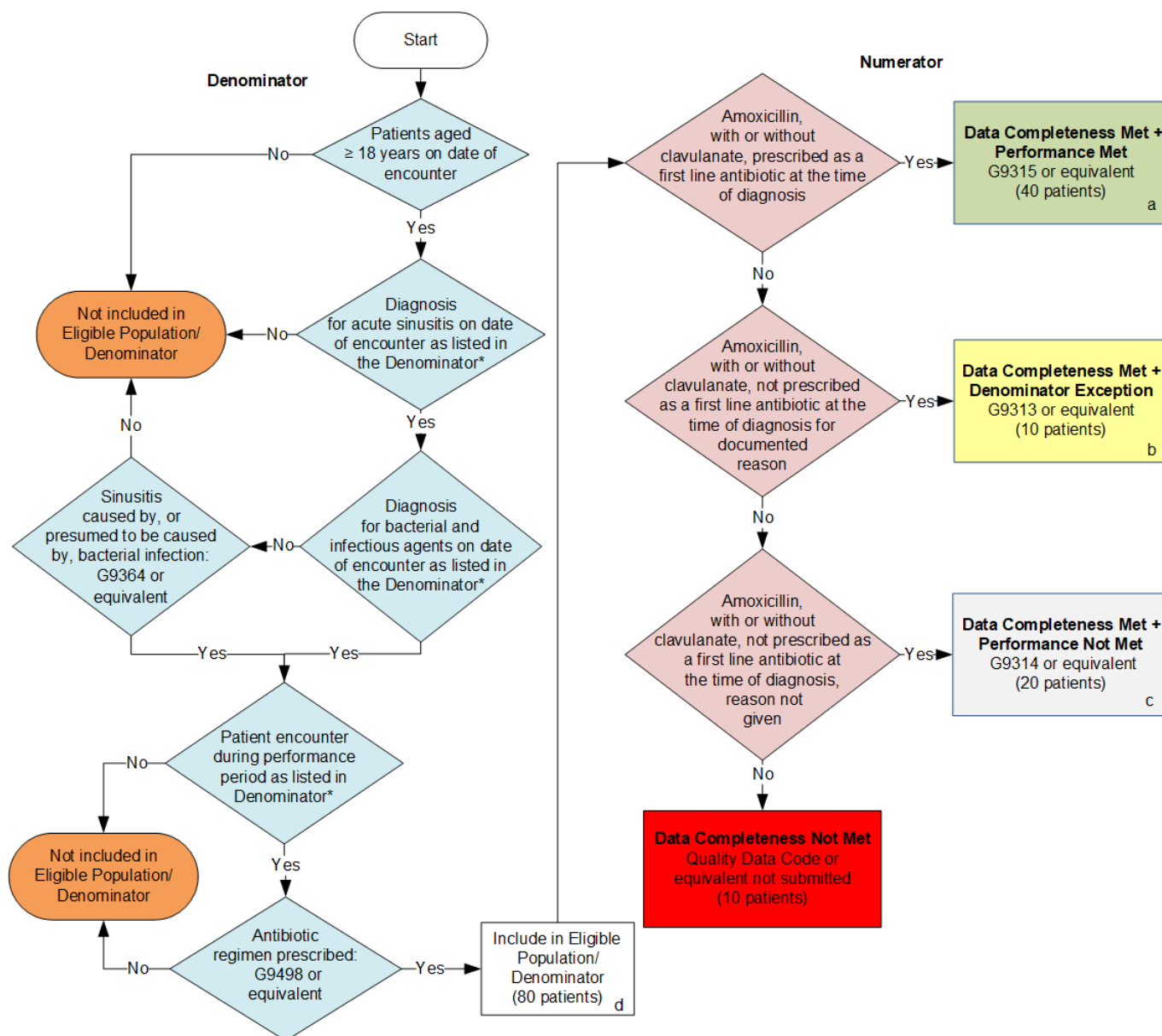
©2025 AAO-HNS Foundation. All Rights Reserved.

Limited proprietary coding may be contained in the Measure specifications for convenience. A license agreement must be entered prior to a third party's use of Current Procedural Terminology (CPT®) or other proprietary code set contained in the Measures. Any other use of CPT or other coding by the third party is strictly prohibited. AAO-HNS Foundation and its members disclaim all liability for use or accuracy of any CPT or other coding contained in the specifications.

CPT® contained in the Measures specifications is copyright 2004-2025 American Medical Association. LOINC® copyright 2004-2025 Regenstrief Institute, Inc. SNOMED CLINICAL TERMS (SNOMED CT®) copyright 2004-2025. The International Health Terminology Standards Development Organisation (IHTSDO). ICD-10 is copyright 2025 World Health Organization. All Rights Reserved.

**2026 Clinical Quality Measure Flow for Quality ID #332:  
Adult Sinusitis: Appropriate Choice of Antibiotic: Amoxicillin With or Without Clavulanate  
Prescribed for Patients with Acute Bacterial Sinusitis (Appropriate Use)**

**Disclaimer:** Refer to the measure specification for specific coding and instructions to submit this measure.



**SAMPLE CALCULATIONS**

**Data Completeness=**

Performance Met (a=40 patients) + Denominator Exception (b=10 patients) + Performance Not Met (c=20 patients) = 70 patients = 87.50%  
Eligible Population / Denominator (d=80 patients) = 80 patients

**Performance Rate=**

Performance Met (a=40 patients) = 40 patients = 66.67%  
Data Completeness Numerator (70 patients) – Denominator Exception (b=10 patients) = 60 patients

\*See the posted measure specification for specific coding and instructions to submit this measure.

NOTE: Submission Frequency: Patient-Process

CPT only copyright 2025 American Medical Association. All rights reserved.  
The measure diagrams were developed by CMS as a supplemental resource to be used in conjunction with the measure specifications. They should not be used alone or as a substitution for the measure specification.

v10

**2026 Clinical Quality Measure Flow Narrative for Quality ID #332:**  
**Adult Sinusitis: Appropriate Choice of Antibiotic: Amoxicillin With or Without Clavulanate Prescribed for**  
**Patients with Acute Bacterial Sinusitis (Appropriate Use)**

*Disclaimer: Refer to the measure specification for specific coding and instructions to submit this measure.*

1. Start with Denominator
2. Check *Patients aged greater than or equal to 18 years on date of encounter*:
  - a. If *Patients aged greater than or equal to 18 years on date of encounter* equals No, do not include in *Eligible Population/Denominator*. Stop processing.
  - b. If *Patients aged greater than or equal to 18 years on date of encounter* equals Yes, proceed to check *Diagnosis for acute sinusitis as listed in the Denominator\**.
3. Check *Diagnosis for acute sinusitis on date of encounter as listed in the Denominator\**:
  - a. If *Diagnosis for acute sinusitis on date of encounter as listed in the Denominator\** equals No, do not include in *Eligible Population/Denominator*. Stop processing.
  - b. If *Diagnosis for acute sinusitis on date of encounter as listed in the Denominator\** equals Yes, proceed to check *Diagnosis for bacterial and infectious agents on date of encounter as listed in the Denominator\**.
4. Check *Diagnosis for bacterial and infectious agents on date of encounter as listed in the Denominator\**:
  - a. If *Diagnosis for bacterial and infectious agents on date of encounter as listed in the Denominator\** equals No, proceed to check *Sinusitis caused by, or presumed to be caused by, bacterial infection*.
  - b. If *Diagnosis for bacterial and infectious agents on date of encounter as listed in the Denominator\** equals Yes, proceed to check *Patient encounter during performance period as listed in Denominator\**.
5. Check *Sinusitis caused by, or presumed to be caused by, bacterial infection*:
  - a. If *Sinusitis caused by, or presumed to be caused by, bacterial infection* equals No, do not include in *Eligible Population/Denominator*. Stop processing.
  - b. If *Sinusitis caused by, or presumed to be caused by, bacterial infection* equals Yes, proceed to check *Patient encounter during performance period as listed in Denominator\**.
6. Check *Patient encounter during performance period as listed in Denominator\**:
  - a. If *Patient encounter during performance period as listed in Denominator\** equals No, do not include in *Eligible Population/Denominator*. Stop processing.
  - b. If *Patient encounter during performance period as listed in Denominator\** equals Yes, proceed to check *Antibiotic regimen prescribed*.
7. Check *Antibiotic regimen prescribed*:
  - a. If *Antibiotic regimen prescribed* equals No, do not include in *Eligible Population/Denominator*. Stop processing.
  - b. If *Antibiotic regimen prescribed* equals Yes, include in *Eligible Population/Denominator*.

8. Denominator Population:
  - a. Denominator Population is all Eligible Patients in the Denominator. Denominator is represented as Denominator in the Sample Calculation listed at the end of this document. Letter d equals 80 patients in the Sample Calculation.
9. Start Numerator
10. Check *Amoxicillin, with or without clavulanate, prescribed as a first line antibiotic at the time of diagnosis*:
  - a. If *Amoxicillin, with or without clavulanate, prescribed as a first line antibiotic at the time of diagnosis* equals Yes, include in *Data Completeness Met and Performance Met*.
    - *Data Completeness Met and Performance Met* letter is represented in the Data Completeness and Performance Rate in the Sample Calculation listed at the end of this document. Letter a equals 40 patients in the Sample Calculation.
  - b. If *Amoxicillin, with or without clavulanate, prescribed as a first line antibiotic at the time of diagnosis* equals No, proceed to check *Amoxicillin, with or without clavulanate, not prescribed as a first line antibiotic at the time of diagnosis for documented reason*.
11. Check *Amoxicillin, with or without clavulanate, not prescribed as a first line antibiotic at the time of diagnosis for documented reason*:
  - a. If *Amoxicillin, with or without clavulanate, not prescribed as a first line antibiotic at the time of diagnosis for documented reason* equals Yes, include in *Data Completeness Met and Denominator Exception*.
    - *Data Completeness Met and Denominator Exception* letter is represented in the Data Completeness and Performance Rate in the Sample Calculation listed at the end of this document. Letter b equals 10 patients in the Sample Calculation.
  - b. If *Amoxicillin, with or without clavulanate, not prescribed as a first line antibiotic at the time of diagnosis for documented reason* equals No, proceed to check *Amoxicillin, with or without clavulanate, not prescribed as a first line antibiotic at the time of diagnosis, reason not given*.
12. Check *Amoxicillin, with or without clavulanate, not prescribed as a first line antibiotic at the time of diagnosis, reason not given*:
  - a. If *Amoxicillin, with or without clavulanate, not prescribed as a first line antibiotic at the time of diagnosis, reason not given* equals Yes, include in the *Data Completeness Met and Performance Not Met*.
    - *Data Completeness Met and Performance Not Met* letter is represented in the Data Completeness in the Sample Calculation listed at the end of this document. Letter c equals 20 patients in the Sample Calculation.
  - b. If *Amoxicillin, with or without clavulanate, not prescribed as a first line antibiotic at the time of diagnosis, reason not given* equals No, proceed to check *Data Completeness Not Met*.
13. Check *Data Completeness Not Met*:
  - a. If *Data Completeness Not Met*, the *Quality Data Code or equivalent* was not submitted. 10 patients have been subtracted from the Data Completeness Numerator in the Sample Calculation.

### Sample Calculations

Data Completeness equals Performance Met (a equals 40 patients) plus Denominator Exception (b equals 10 patients) plus Performance Not Met (c equals 20 patients) divided by Eligible Population/Denominator (d equals 80 patients). All equals 70 patients divided by 80 patients. All equals 87.50 percent.

Performance Rate equals Performance Met (a equals 40 patients) divided by Data Completeness Numerator (70 patients) minus Denominator Exception (b equals 10 patients). All equals 40 patients divided by 60 patients. All equals 66.67 percent.

\*See the posted measure specification for specific coding and instructions to submit this measure.

NOTE: Submission Frequency: Patient-Process

The measure diagrams were developed by CMS as a supplemental resource to be used in conjunction with the measure specifications. They should not be used alone or as a substitution for the measure specification.