

Quality ID #304: Cataracts: Patient Satisfaction within 90 Days Following Cataract Surgery

2026 COLLECTION TYPE:

MERIT-BASED INCENTIVE PAYMENT SYSTEM (MIPS) CLINICAL QUALITY MEASURE (CQM)

MEASURE TYPE:

Patient Engagement / Experience – High Priority

DESCRIPTION:

Percentage of patients aged 18 years and older who had cataract surgery and were satisfied with their care within 90 days following the cataract surgery, based on completion of the Consumer Assessment of Healthcare Providers and Systems Surgical Care Survey.

INSTRUCTIONS:

Reporting Frequency:

This measure is to be submitted each time for denominator eligible cases as defined in the denominator criteria.

Intent and Clinician Applicability:

This measure is intended to reflect the quality of services provided for the patient receiving cataract surgery.

This is an outcome measure and will be calculated solely using Merit-based Incentive Payment System (MIPS) eligible clinician, group, or third-party intermediary submitted data.

Measure Strata and Performance Rates:

This measure contains one strata defined by a single submission criteria.

This measure produces a single performance rate

Implementation Considerations:

For the purposes of MIPS implementation, this procedure measure is submitted each time a procedure is performed.

This is an outcome measure and will be calculated solely using Merit-based Incentive Payment System (MIPS) eligible clinician, group, or third-party intermediary submitted data.

- For patients who receive the cataract surgical procedures specified in the denominator coding, it should be submitted whether or not the patient was satisfied with their care within 90 days following the cataract surgery.
- Only procedures performed between **January 1st and September 30th** of the performance period are eligible for the denominator. This will allow the post-operative period to occur before third-party intermediaries must submit data to CMS.
- It is the responsibility of the third-party intermediary to collate and score the surveys.

Telehealth:

NOT TELEHEALTH ELIGIBLE: This measure **is not appropriate for nor applicable to the telehealth setting**. This measure is procedure based and therefore doesn't allow for the denominator criteria to be conducted via telehealth. It would be appropriate to remove these patients from the denominator eligible patient population. Telehealth eligibility is at the measure level for inclusion within the denominator eligible patient population and based on the measure specification definitions which are independent of changes to coding and/or billing practices.

Measure Submission:

The quality data codes listed do not need to be submitted by MIPS eligible clinicians, groups, or third party intermediaries that utilize this collection type for submissions; however, these codes may be submitted for those third party intermediaries that utilize Medicare Part B claims data. The coding provided to identify the measure criteria: Denominator or Numerator, may be an example of coding that could be used to identify patients that meet the intent of this clinical topic. When

implementing this measure, please refer to the 'Reference Coding' section to determine if other codes or code languages that meet the intent of the criteria may also be used within the medical record to identify and/or assess patients. For more information regarding Application Programming Interface (API), please refer to the Quality Payment Program (QPP) website.

DENOMINATOR:

All patients aged 18 years and older who had cataract surgery.

Denominator Criteria (Eligible Cases):

Patients aged ≥ 18 years on date of encounter

AND

Patient procedure during the performance period (CPT): 66840, 66850, 66852, 66920, 66930, 66940, 66982, 66983, 66984, 66987, 66988

WITHOUT

Modifier: 55 or 56

NUMERATOR:

Patients 18 years and older who were satisfied with their care within 90 days following cataract surgery, based on completion of the Consumer Assessment of Healthcare Providers and Systems Surgical Care Survey.

NUMERATOR NOTE:

Denominator Exception(s) are determined within 90 days of the date of the denominator eligible procedure.

Numerator Options:

Performance Met:

Satisfaction with care achieved within 90 days following cataract surgery (**G0916**)

OR

Denominator Exception:

Patient care survey was not completed by patient (**G0917**)

OR

Performance Not Met:

Satisfaction with care not achieved within 90 days following cataract surgery (**G0918**)

RATIONALE:

1) Scientific Basis for Measuring Patient Satisfaction after Cataract Surgery

Patient satisfaction is a valuable performance indicator for measuring the quality of care delivered by ophthalmologists providing cataract surgery. In the broadest sense, patient satisfaction is an assessment of the patient's experience with the care process delivered by health plans, clinicians, health systems, hospitals, etc. This experience can cover domains as diverse as information/education, interpersonal manner, emotional support, accessibility, convenience, outcomes or results, environment, personalization, involvement in care, finances, etc.

In 1996, The American Academy of Ophthalmology launched the National Eyecare Outcomes Network (NEON) database. From January 1, 1996 through March 30, 2001, 249 ophthalmologists at 114 different practice sites submitted data to the NEON cataract surgery database. Post-operative patient satisfaction responses were collected for 6,154 patients, or about 34.5% of all patients who had pre-operative forms submitted. This assessment was performed at a median of 4.1 weeks postoperatively for all patients enrolled in the database. A 12-item questionnaire was used to assess patient satisfaction. Patient satisfaction was associated with younger age and absence of ocular comorbidity.

Other studies of patient satisfaction after cataract surgery were conducted in Austria and in Spain. The Austrian study found that patients with pre-existing eye disease, including those patients with improved visual acuity after surgery, were the least satisfied with the results of surgery. In these cases, improved patient education prior to

surgery could be helpful in improving patient satisfaction. The Spanish study found that patient satisfaction was associated with expectations prior to surgery.

Most patients are satisfied with their care and results after cataract surgery. This outcome is achieved consistently through careful attention through the patient selection process, accurate measurement of axial length and corneal power, appropriate selection of an IOL power calculation formula, etc. As such, it reflects the care and diligence with which the surgery is assessed, planned and executed. Failure to achieve this satisfaction after surgery would reflect patterns of patient selection or treatment that should be assessed for opportunities for improvement.

Use of this indicator in Medicare Part B Claims reporting method would require some modification to the current reporting of post-operative care for patients undergoing cataract surgery, since this indicator would be operative during the 90-day global period. However, there is a strong and practical precedent for such modifications in that reporting arrangements have previously been made to accommodate co-management of care by different providers during the post-operative period. A similar adjustment to allow for filing of a claim of meeting this goal at one point in the 90-day global period would be sufficient, potentially drawing upon the methods to demarcate the onset of co-management transfer of post-operative care.

Various patient satisfaction instruments exist, but an instrument developed by the program, Consumer Assessment of Healthcare Providers and Systems (CAHPS), Agency for Healthcare Research and Quality develops and supports the use of a comprehensive and evolving family of standardized surveys that ask consumers and patients to report on and evaluate their experiences with health care. These surveys cover topics that are important to consumers, such as the communication skills of providers and the accessibility of services. AHRQ first launched the CAHPS program in October 1995 in response to concerns about the lack of good information about the quality of health plans from the enrollees' perspective. At that time, numerous public and private organizations collected information on enrollee and patient satisfaction, but the surveys varied from sponsor to sponsor and often changed from year to year.

The CAHPS Surgical Care Survey asks adult patients to report on surgical care, surgeons, their staff, and anesthesiologists. It was developed by the American College of Surgeons and the Surgical Quality Alliance to assess patients' experiences before, during, and after surgery. In early 2010, the CAHPS Consortium voted to adopt the Surgical Care Survey as an official CAHPS survey. The Surgical Care Survey expands on the current CAHPS Clinician & Group Survey, which focuses on primary and specialty care, by incorporating domains that are relevant to surgical care, such as informed consent, anesthesia care, and post-operative follow-up. The survey is unique in that it assesses patients' experiences with surgical care in both the inpatient and outpatient settings by asking respondents about their care before, during, and after surgery.

The main purpose of the CAHPS Surgical Care Survey is to address the need to assess and improve the experiences of surgical patients. Like other CAHPS surveys, this questionnaire focuses on aspects of surgical quality that are important to patients and for which patients are the best source of information. The survey results are expected to be useful to everyone with a need for information on the quality of surgeons and surgical care, including patients, practice groups, health plans, insurers, and specialty boards. Patients can use the information to help make better and more informed choices about their surgical care. Practices, health plans, and insurers can use the survey results for quality improvement initiatives and incentives. Specialty boards may use the survey for maintenance of certification.

The composite measures of surgical quality from the S-CAHPS that are most relevant and significant for this physician-level performance measure include:

How well surgeon communicates with patients before surgery, How well surgeon communicates with patients after surgery, Rating of overall care from this surgeon

2) Evidence of a Gap in Care

This is an outcome of surgery indicator of direct relevance and importance to patients, their families and referring providers. The available evidence suggests that cataract surgery achieves this in about 90% of patients. While the potential for improvement appears seemingly small, the volume of cataract surgery in the U.S. of over 2.8 million surgeries means that the impact could affect more than 100,000 patients per year. Ideally performance on this indicator should be as high as possible, with rates lower than 95-100% suggestive of opportunities for improvement.

3) Survey Methodology

The survey should be administered, collated and scored by the registry, or by a third-party intermediary, to prevent or minimize bias which might be introduced if it is an in-office paper survey with questions asked by the office staff. Options would be provided to the patient, either online survey, mail survey or phone survey (third-party intermediary or registry only), depending on their preferences and abilities.

4) Definition of Patient Satisfaction

The strategy for defining patient satisfaction is described as follows. CAHPS scores are actually normative scores, that is, they provide relative rankings rather than absolute rankings (where a score is compared with an 'objective criterion'). Patient satisfaction would be defined as a score above the lowest 5% of scores on the CAHPS.

CLINICAL RECOMMENDATION STATEMENTS:

This is an outcome measure. As such, there are no recommendation statements in the guideline specific to this measurement topic.

REFERENCES:

There are no sources in the current document.

COPYRIGHT:

The measure has been developed by the H. Dunbar Hoskins Jr. MD Center for Quality Eye Care of the American Academy of Ophthalmology. The measure relies on additional survey instruments that are owned and copyrighted by third parties. The measure is not a clinical guideline, does not establish a medical standard and has not been tested in all possible applications.

The measure, while copyrighted, can be reproduced and distributed, without modification, for noncommercial purposes, e.g., use by health care providers in connection with their practices. Commercial use is defined as the sale, license, or distribution of the measure for commercial gain, or incorporation of the measure into a product or service that is sold, licensed or distributed for commercial gain.

Commercial uses of the measure requires a license agreement between the user and the American Academy of Ophthalmology (Academy). Neither the Academy, nor its members, shall be responsible for any use of the measure.

THESE MEASURE AND SPECIFICATIONS ARE PROVIDED "AS IS" WITHOUT WARRANTY OF ANY KIND.

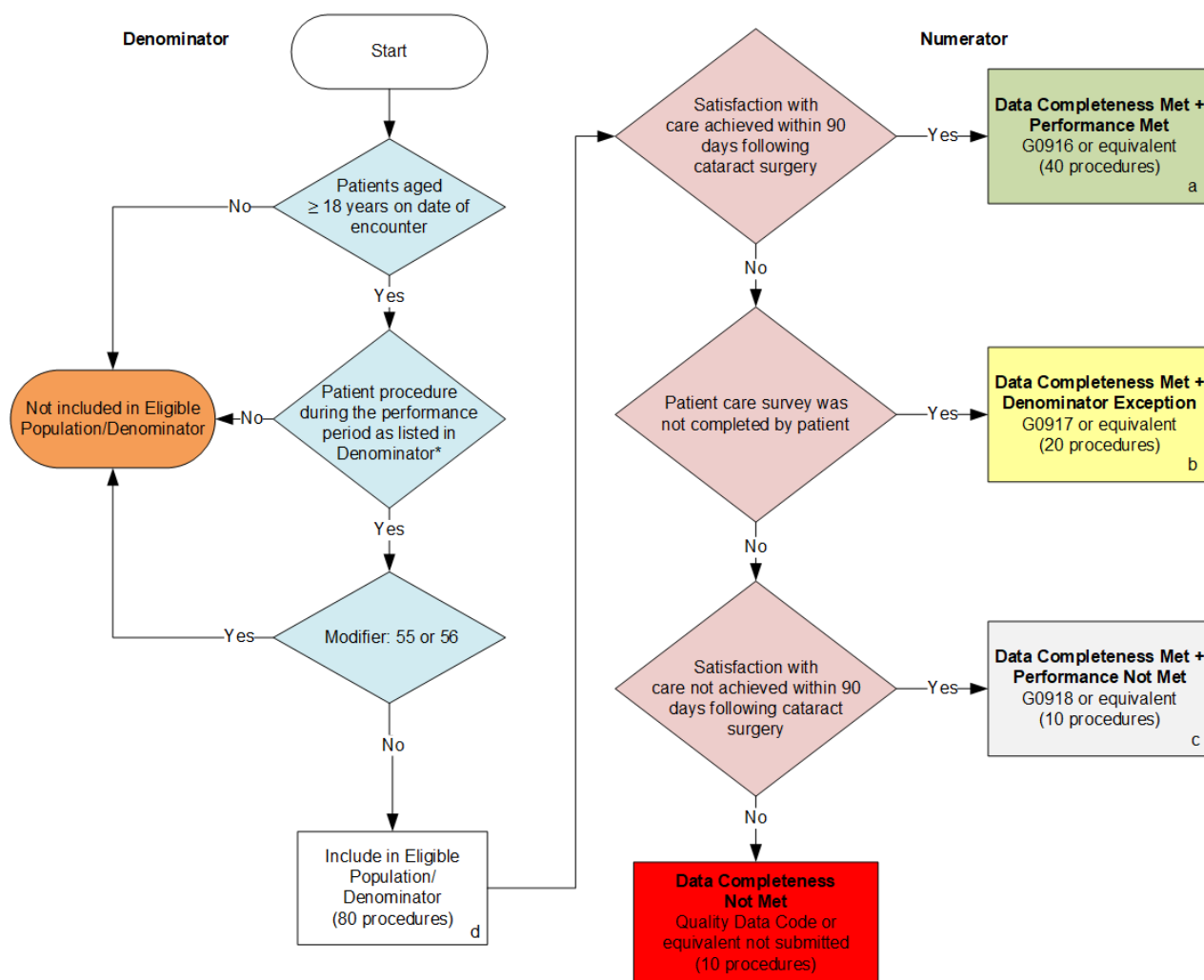
© 2007-2025 American Academy of Ophthalmology. All Rights Reserved.

Limited proprietary coding from Current Procedural Terminology (CPT®) is contained in the measure specifications. A license agreement must be entered prior to a third party's use of Current Procedural Terminology (CPT®) or other proprietary code set contained in the Measures. Any other use of CPT or other coding by the third party is strictly prohibited. The Academy and its members disclaims all liability for use or accuracy of the coding contained in these measure specifications.

CPT® contained in the Measure specifications is copyright 2004-2025 American Medical Association. All Rights Reserved.

2026 Clinical Quality Measure Flow for Quality ID #304: Cataracts: Patient Satisfaction within 90 Days Following Cataract Surgery

Disclaimer: Refer to the measure specification for specific coding and instructions to submit this measure.



SAMPLE CALCULATIONS

Data Completeness=

$$\frac{\text{Performance Met (a=40 procedures)} + \text{Denominator Exception (b=20 procedures)} + \text{Performance Not Met (c=10 procedures)}}{\text{Eligible Population / Denominator (d=80 procedures)}} = \frac{70 \text{ procedures}}{80 \text{ procedures}} = 87.50\%$$

Performance Rate=

$$\frac{\text{Performance Met (a=40 procedures)}}{\text{Data Completeness Numerator (70 procedures) - Denominator Exception (b=20 procedures)}} = \frac{40 \text{ procedures}}{50 \text{ procedures}} = 80.00\%$$

*See the posted measure specification for specific coding and instructions to submit this measure.

NOTE: Submission Frequency: Procedure

CPT only copyright 2025 American Medical Association. All rights reserved.
The measure diagrams were developed by CMS as a supplemental resource to be used in conjunction with the measure specifications. They should not be used alone or as a substitution for the measure specification.

v10

2026 Clinical Quality Measure Flow Narrative for Quality ID #304:
Cataracts: Patient Satisfaction within 90 Days Following Cataract Surgery

Disclaimer: Refer to the measure specification for specific coding and instructions to submit this measure.

1. Start with Denominator
2. Check *Patients aged greater than or equal to 18 years on date of encounter*:
 - a. If *Patients aged greater than or equal to 18 years on date of encounter* equals No, do not include in *Eligible Population/Denominator*. Stop processing.
 - b. If *Patients aged greater than or equal to 18 years on date of encounter* equals Yes, proceed to check *Patient procedure during the performance period as listed in Denominator**.
3. Check *Patient procedure during the performance period as listed in Denominator**:
 - a. If *Patient procedure during the performance period as listed in Denominator** equals No, do not include in *Eligible Population/Denominator*. Stop processing.
 - b. If *Patient procedure during the performance period as listed in Denominator** equals Yes, proceed to check *Modifier*.
4. Check *Modifier*:
 - a. If *Modifier: 55 or 56* equals Yes, do not include in *Eligible Population/Denominator*. Stop processing.
 - b. If *Modifier: 55 or 56* equals No, include in *Eligible Population/Denominator**.
5. Denominator Population:
 - Denominator Population is all Eligible Procedures in the Denominator. Denominator is represented as Denominator in the Sample Calculation listed at the end of this document. Letter d equals 80 procedures in the Sample Calculation.
6. Start Numerator
7. Check *Satisfaction with care achieved within 90 days following cataract surgery*:
 - a. If *Satisfaction with care achieved within 90 days following cataract surgery* equals Yes, include in *Data Completeness Met and Performance Met*.
 - *Data Completeness Met and Performance Met* letter is represented in the Data Completeness and Performance Rate in the Sample Calculation listed at the end of this document. Letter a equals 40 procedures in Sample Calculation.
 - b. If *Satisfaction with care achieved within 90 days following cataract surgery* equals No, proceed to check *Patient care survey was not completed by patient*.

8. Check *Patient care survey was not completed by patient*:
 - a. If *Patient care survey was not completed by patient* equals Yes, include in *Data Completeness Met and Denominator Exception*.
 - *Data Completeness Met and Denominator Exception* letter is represented in the Data Completeness in the Sample Calculation listed at the end of this document. Letter b equals 20 procedures in the Sample Calculation.
 - b. If *Patient care survey was not completed by patient* equals No, proceed to check *Satisfaction with care not achieved within 90 days following cataract surgery*.
9. Check *Satisfaction with care not achieved within 90 days following cataract surgery*:
 - a. If *Satisfaction with care not achieved within 90 days following cataract surgery* equals Yes, include in the *Data Completeness Met and Performance Not Met*.
 - *Data Completeness Met and Performance Not Met* letter is represented in the Data Completeness in the Sample Calculation listed at the end of this document. Letter c equals 10 procedures in the Sample Calculation.
 - b. If *Satisfaction with care not achieved within 90 days following cataract surgery* equals No, proceed to check *Data Completeness Not Met*.
10. Check *Data Completeness Not Met*:
 - If *Data Completeness Not Met*, the Quality Data Code or equivalent was not submitted. 10 procedures have been subtracted from the Data Completeness Numerator in the Sample Calculation.

Sample Calculations

Data Completeness equals Performance Met (a equals 40 procedures) plus Denominator Exception (b equals 20 procedures) plus Performance Not Met (c equals 10 procedures) divided by Eligible Population / Denominator (d equals 80 procedures). All equals 70 procedures divided by 80 procedures. All equals 87.50 percent.

Performance Rate equals Performance Met (a equals 40 procedures) divided by Data Completeness Numerator (70 procedures) minus Denominator Exception (b equals 20 procedures). All equals 40 procedures divided by 50 procedures. All equals 80.00 percent.

*See the posted measure specification for specific coding and instructions to submit this measure.

NOTE: Submission Frequency: Procedure

The measure diagrams were developed by CMS as a supplemental resource to be used in conjunction with the measure specifications. They should not be used alone or as a substitution for the measure specification.