

Quality ID #282: Dementia: Functional Status Assessment

2026 COLLECTION TYPE:

MERIT-BASED INCENTIVE PAYMENT SYSTEM (MIPS) CLINICAL QUALITY MEASURE (COM)

MEASURE TYPE:

Process

DESCRIPTION:

Percentage of patients with dementia for whom an assessment of functional status was performed at least once in the last 12 months.

INSTRUCTIONS:

Reporting Frequency:

This measure is to be submitted a minimum of once per performance period for denominator eligible cases as defined in the denominator criteria.

Intent and Clinician Applicability:

This measure is intended to reflect the quality of services provided for patients with dementia. This measure may be submitted by Merit-based Incentive Payment System (MIPS) eligible clinicians who perform the quality actions described in the measure based on the services provided and the measure-specific denominator coding.

Measure Strata and Performance Rates:

This measure contains one strata defined by a single submission criteria.

This measure produces a single performance rate.

Implementation Considerations:

For the purposes of MIPS implementation, this patient-process measure is submitted a minimum of once per patient during the performance period. The most advantageous quality data code will be used if the measure is submitted more than once.

Telehealth:

TELEHEALTH ELIGIBLE: This measure is appropriate for and applicable to the telehealth setting. Patient encounters conducted via telehealth using encounter code(s) found in the denominator encounter criteria are allowed for this measure. Therefore, if the patient meets all denominator criteria for a telehealth encounter, it would be appropriate to include them in the denominator eligible patient population. Telehealth eligibility is at the measure level for inclusion within the denominator eligible patient population and based on the measure specification definitions which are independent of changes to coding and/or billing practices.

Measure Submission:

The quality data codes listed do not need to be submitted by MIPS eligible clinicians, groups, or third party intermediaries that utilize this collection type for submissions; however, these codes may be submitted for those third party intermediaries that utilize Medicare Part B claims data. The coding provided to identify the measure criteria: Denominator or Numerator, may be an example of coding that could be used to identify patients that meet the intent of this clinical topic. When implementing this measure, please refer to the 'Reference Coding' section to determine if other codes or code languages that meet the intent of the criteria may also be used within the medical record to identify and/or assess patients. For more information regarding Application Programming Interface (API), please refer to the Quality Payment Program (QPP) website.

DENOMINATOR:

All patients with a diagnosis of dementia.

DENOMINATOR NOTE:

**Signifies that this CPT Category I code is a non-covered service under the Medicare Part B Physician Fee Schedule*

(PFS). These non-covered services should be counted in the denominator population for MIPS CQMs.

Denominator Criteria (Eligible Cases):

All patients regardless of age

AND

Diagnosis for dementia (ICD-10-CM): A52.17, A81.00, A81.01, A81.89, F01.50, F01.511, F01.518, F01.52, F01.53, F01.54, F01.A0, F01.A11, F01.A18, F01.A2, F01.A3, F01.A4, F01.B0, F01.B11, F01.B18, F01.B2, F01.B3, F01.B4, F01.C0, F01.C11, F01.C18, F01.C2, F01.C3, F01.C4, F02.80, F02.811, F02.818, F02.82, F02.83, F02.84, F02.A0, F02.A11, F02.A18, F02.A2, F02.A3, F02.A4, F02.B0, F02.B11, F02.B18, F02.B2, F02.B3, F02.B4, F02.C0, F02.C11, F02.C18, F02.C2, F02.C3, F02.C4, F03.90, F03.911, F03.918, F03.92, F03.93, F03.94, F03.A0, F03.A11, F03.A18, F03.A2, F03.A3, F03.A4, F03.B0, F03.B11, F03.B18, F03.B2, F03.B3, F03.B4, F03.C0, F03.C11, F03.C18, F03.C2, F03.C3, F03.C4, F10.27, G30.0, G30.1, G30.8, G30.9, G31.01, G31.09, G31.83, G31.85, G31.89, G94

AND

Patient encounter during the performance period (CPT or HCPCS): 78811, 78814, 90791, 90792, 90832, 90834, 90837, 92522, 92523, 92610, 92611, 92612, 92616, 96105, 96112, 96116, 96125, 96130, 96132, 96136, 96138, 96146, 96156, 96158, 96164, 96167, 96170*, 97161, 97162, 97163, 97164, 97165, 97166, 97167, 97168, 98000, 98001, 98002, 98003, 98004, 98005, 98006, 98007, 98008, 98009, 98010, 98011, 98012, 98013, 98014, 98015, 99202, 99203, 99204, 99205, 99211, 99212, 99213, 99214, 99215, 99221, 99222, 99223, 99231, 99232, 99233, 99238, 99239, 99242*, 99243*, 99244*, 99245*, 99252*, 99253*, 99254*, 99255*, 99304, 99305, 99306, 99307, 99308, 99309, 99310, 99341, 99342, 99344, 99345, 99347, 99348, 99349, 99350, 99424, 99426, 99487, 99490, 99491, 99497, A9586, A9601, Q9982, Q9983

NUMERATOR:

Patients for whom an assessment of functional status was performed at least once in the last 12 months.

Definition:

Assessment of functional status – Functional status is assessed by use of a validated tool, direct assessment of the patient, or by querying a knowledgeable informant. A direct “assessment of functional status” includes an evaluation of the patient’s ability to perform instrumental activities of daily living (IADL) and basic activities of daily living (ADL).

Numerator Instructions:

To meet this measure providers must assess BOTH IADL and ADL performance.

1. IADL Assessment (users must meet one of the two below bullets to meet IADL assessment component)
 - To meet the measure’s IADL component using a validated tool, providers must use one of the following tools:
 - Lawton Instrumental Activities of Daily Living Scale
 - Bristol Activities of Daily Living Scale
 - Katz Index of Independence in Activities of Daily Living
 - Functional Activities Questionnaire
 - Functional Independence Measure Instrument
 - To meet the measure’s IADL component using a direct assessment, providers must document 3 out of the following 5 domains.
 - Cleaning or hobbies,
 - Money management,
 - Medication management,
 - Transportation, and
 - Cooking or communication
2. ADL Assessment (users must meet one of the two below bullets to meet ADL assessment component)
 - To meet the measure’s ADL component using a validated tool, providers must use either:
 - Barthel ADL Index
 - Bristol Activities of Daily Living Scale
 - To meet the measure’s ADL component using a direct assessment, providers must document 3 out of the following 7 domains.

- Grooming,
- Bathing,
- Dressing,
- Eating,
- Toileting,
- Gait, and
- Transferring.

NUMERATOR NOTE:

The 12 month look back period is defined as 12 months from the date of the denominator eligible encounter.

Denominator Exception(s) are determined on the date of the denominator eligible encounter. Documentation of advanced stage dementia and caregiver knowledge is limited would meet the measure exception criteria.

Numerator Options:

<u>OR</u>	<u>Performance Met:</u>	Functional status performed once in the last 12 months (G9916)
	<u>Denominator Exception:</u>	Documentation of advanced stage dementia and caregiver knowledge is limited (G9917)
<u>OR</u>	<u>Performance Not Met:</u>	Functional status not performed, reason not otherwise specified (G9918)

RATIONALE:

Maintaining or increasing physical functioning levels is a desired outcome. This is key to maintaining quality of life and reducing caregiver burden. This requires regular assessment of function in multiple domains.

In routine practice, persons with dementia may not be assessed regularly for changes in their ability to perform both basic and instrumental activities of daily living. Frequent and comprehensive assessments will allow health care providers to track these changes and to make timely interventions aimed at preserving function or mitigating disability.

When planning interventions to improve or maintain function, it is important to consider a broad range of causes of functional impairment, including impaired cognition.

CLINICAL RECOMMENDATION STATEMENTS:

Perform regular, comprehensive person-centered assessments and timely interim assessments. Assessments, conducted at least every 6 months, should prioritize issues that help the person with dementia to live fully. These include assessments of the individual and care partner's relationships and subjective experience and assessment of cognition, behavior, and function, using reliable and valid tools. Assessment is ongoing and dynamic, combining nomothetic (norm-based) and idiographic (individualized) approaches.

REFERENCES:

Black, B. S., Johnston, D., Rabins, P. V., Morrison, A., Lyketsos, C., & Samus, Q. M. (2013). Unmet needs of community-residing persons with dementia and their informal caregivers: Findings from the MIND at Home study. *Journal of the American Geriatrics Society*, 61(12), 2087–2095. Retrieved from <https://doi.org/10.1111/jgs.12549>

Molony, S. L., Kolanowski, A., Van Haltsma, K., & Rooney, K. E. (2018). Person-centered assessment and care planning. *The Gerontologist*, 58(Suppl 1), S32–S47. Retrieved from <https://doi.org/10.1093/geront/gnx173>

COPYRIGHT:

Quality Measures published by the American Academy of Neurology Institute (AANI) and its affiliates are assessments of current scientific and clinical information provided as an educational service. The information: 1) should not be considered inclusive of all proper treatments, methods of care, or as a statement of the standard of care; 2) is not continually updated and may not reflect the most recent evidence (new evidence may emerge between the time information is developed and when it is published or read); 3) addresses only the question(s) or topic(s) specifically identified; 4) does not mandate any particular course of medical care; and 5) is not intended to substitute for the independent professional judgment of the

treating provider, as the information does not account for individual variation among patients. In all cases, the selected course of action should be considered by the treating provider in the context of treating the individual patient. Use of the information is voluntary. AANI provides this information on an "as is" basis, and makes no warranty, expressed or implied, regarding the information. AANI specifically disclaims any warranties of merchantability or fitness for a particular use or purpose. AANI assumes no responsibility for any injury or damage to persons or property arising out of or related to any use of this information or for any errors or omissions.

THE MEASURE AND SPECIFICATIONS ARE PROVIDED "AS IS" WITHOUT WARRANTY OF ANY KIND.

©2025 American Academy of Neurology Institute. All rights reserved.

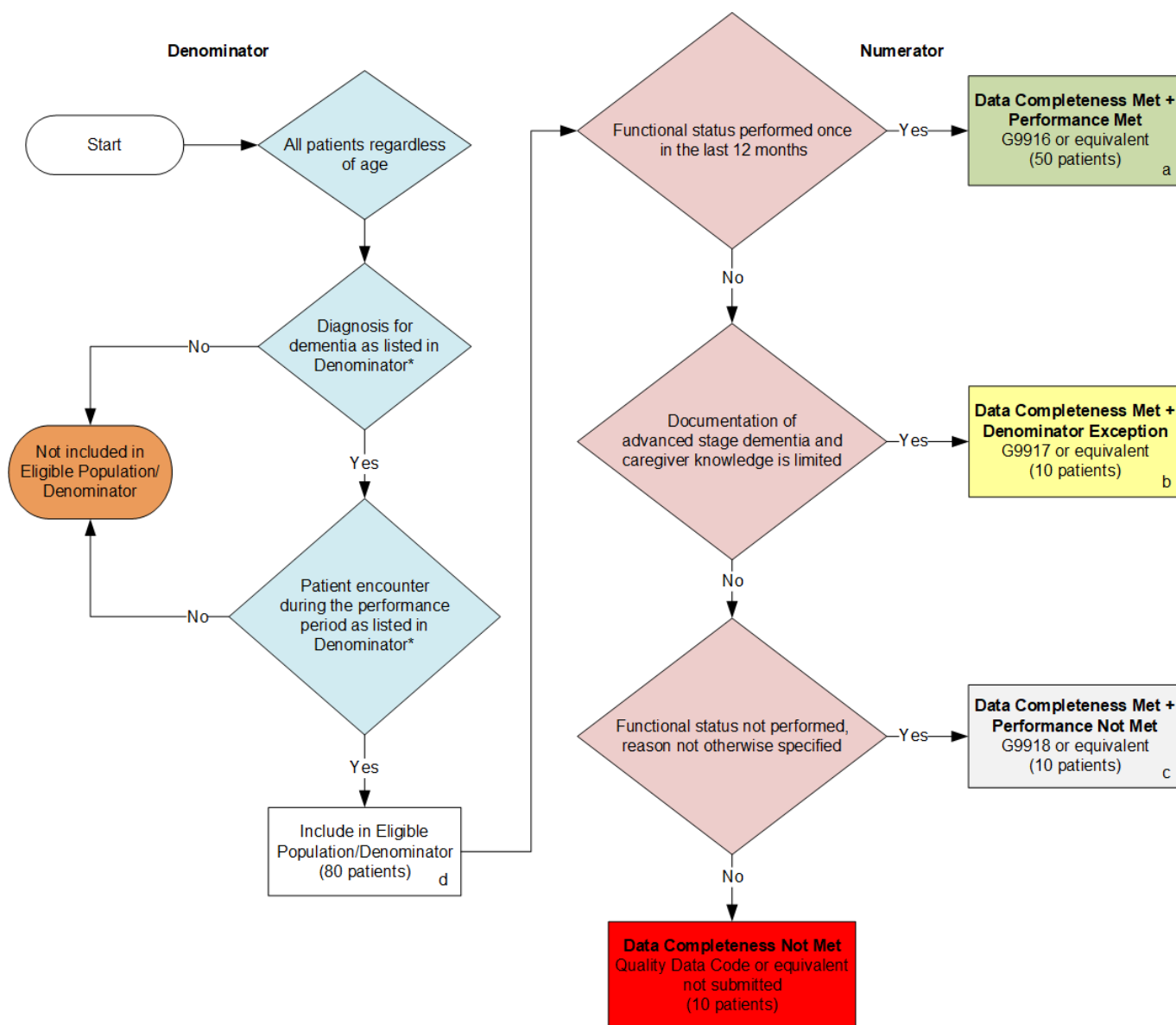
The American Psychiatric Association's (APA), PCPI's, and AMA's significant past efforts and contributions to the development and updating of the Measure are acknowledged.

Limited proprietary coding may be contained in the Measure specifications for convenience. A license agreement must be entered prior to a third party's use of Current Procedural Terminology (CPT®) or other proprietary code set contained in the Measure. Any other use of CPT or other coding by the third party is strictly prohibited. AANI, APA, AMA, and the former members of the PCPI disclaim all liability for use or accuracy of any CPT or other coding contained in the specifications.

CPT® contained in the Measures specifications is copyright 2004-2025 American Medical Association. LOINC® copyright 2004-2025 Regenstrief Institute, Inc. SNOMED CLINICAL TERMS (SNOMED CT®) copyright 2004-2025. The International Health Terminology Standards Development Organisation (IHTSDO). ICD-10 is copyright 2025 World Health Organization. All Rights Reserved.

2026 Clinical Quality Measure Flow for Quality ID #282: Dementia: Functional Status Assessment

Disclaimer: Refer to the measure specification for specific coding and instructions to submit this measure.



SAMPLE CALCULATIONS

Data Completeness=

$$\frac{\text{Performance Met (a=50 patients)} + \text{Denominator Exception (b=10 patients)} + \text{Performance Not Met (c=10 patients)}}{\text{Eligible Population / Denominator (d=80 patients)}} = \frac{70 \text{ patients}}{80 \text{ patients}} = 87.50\%$$

Performance Rate=

$$\frac{\text{Performance Met (a=50 patients)}}{\text{Data Completeness Numerator (70 patients) - Denominator Exception (b=10 patients)}} = \frac{50 \text{ patients}}{60 \text{ patients}} = 83.33\%$$

* See the posted measure specification for specific coding and instructions to submit this measure.

NOTE: Submission Frequency: Patient-Process

CPT only copyright 2025 American Medical Association. All rights reserved.
The measure diagrams were developed by CMS as a supplemental resource to be used in conjunction with the measure specifications. They should not be used alone or as a substitution for the measure specification.

v10

2026 Clinical Quality Measure Flow Narrative for Quality ID #282: Dementia: Functional Status Assessment

Disclaimer: Refer to the measure specification for specific coding and instructions to submit this measure.

1. Start with Denominator
2. *All patients regardless of age*
3. Check *Diagnosis for dementia as listed in Denominator**:
 - a. If *Diagnosis for dementia as listed in Denominator** equals No, do not include in *Eligible Population/Denominator*. Stop processing.
 - b. If *Diagnosis for dementia as listed in Denominator** equals Yes, proceed to check *Patient encounter during the performance period as listed in Denominator**.
4. Check *Patient encounter during the performance period as listed in Denominator**:
 - a. If *Patient encounter during the performance period as listed in Denominator** equals No, do not include in *Eligible Population/Denominator*. Stop processing.
 - b. If *Patient encounter during the performance period as listed in Denominator** equals Yes, include in *Eligible Population/Denominator*.
5. Denominator Population:
 - Denominator Population is all Eligible Patients in the Denominator. Denominator is represented as Denominator in the Sample Calculation listed at the end of this document. Letter d equals 80 patients in the Sample Calculation.
6. Start Numerator
7. Check *Functional status performed once in the last 12 months*:
 - a. If *Functional status performed once in the last 12 months* equals Yes, include in *Data Completeness Met and Performance Met*.
 - *Data Completeness Met and Performance Met* letter is represented in the Data Completeness and Performance Rate in the Sample Calculation listed at the end of this document. Letter a equals 50 patients in the Sample Calculation.
 - b. If *Functional status performed once in the last 12 months* equals No, proceed to check *Documentation of advanced stage dementia and caregiver knowledge is limited*.
8. Check *Documentation of advanced stage dementia and caregiver knowledge is limited*:
 - a. If *Documentation of advanced stage dementia and caregiver knowledge is limited* equals Yes, include in *Data Completeness Met and Denominator Exception*.
 - *Data Completeness Met and Denominator Exception* letter is represented in the Data Completeness and Performance Rate in the Sample Calculation listed at the end of this document. Letter b equals 10 patients in the Sample Calculation.
 - b. If *Documentation of advanced stage dementia and caregiver knowledge is limited* equals No, proceed to check *Functional status not performed, reason not otherwise specified*.

9. Check *Functional status not performed, reason not otherwise specified*:
- If *Functional status not performed, reason not otherwise specified* equals Yes, include in *Data Completeness Met and Performance Not Met*.
 - Data Completeness Met and Performance Not Met* letter is represented in the Data Completeness in the Sample Calculation listed at the end of this document. Letter c equals 10 patients in the Sample Calculation.
 - If *Functional status not performed, reason not otherwise specified* equals No, proceed to check *Data Completeness Not Met*.
10. Check *Data Completeness Not Met*:
- If *Data Completeness Not Met*, the Quality Data Code or equivalent was not submitted. 10 patients have been subtracted from the Data Completeness Numerator in the Sample Calculation.

Sample Calculations

Data Completeness equals Performance Met (a equals 50 patients) plus Denominator Exception (b equals 10 patients) plus Performance Not Met (c equals 10 patients) divided by Eligible Population/Denominator (d equals 80 patients). All equals 70 patients divided by 80 patients. All equals 87.50 percent.

Performance Rate equals Performance Met (a equals 50 patients) divided by Data Completeness Numerator (70 patients) minus Denominator Exception (b equals 10 patients). All equals 50 patients divided by 60 patients. All equals 83.33 percent.

*See the posted measure specification for specific coding and instructions to submit this measure.

NOTE: Submission Frequency: Patient-Process

The measure diagrams were developed by CMS as a supplemental resource to be used in conjunction with the measure specifications. They should not be used alone or as a substitution for the measure specification.