

Quality ID #275: Inflammatory Bowel Disease (IBD): Assessment of Hepatitis B Virus (HBV) Status Before Initiating Anti-TNF (Tumor Necrosis Factor) Therapy

2026 COLLECTION TYPE:

MERIT-BASED INCENTIVE PAYMENT SYSTEM (MIPS) CLINICAL QUALITY MEASURE (CQM)

MEASURE TYPE:

Process

DESCRIPTION:

Percentage of patients with a diagnosis of inflammatory bowel disease (IBD) who had Hepatitis B Virus (HBV) status assessed and results interpreted prior to initiating anti-TNF (tumor necrosis factor) therapy.

INSTRUCTIONS:

Reporting Frequency:

This measure is to be submitted a minimum of once per performance period for denominator eligible cases as defined in the denominator criteria.

Intent and Clinical Applicability:

This measure is intended to reflect the quality of services provided for patients with a diagnosis of inflammatory bowel disease. This measure may be submitted by Merit-based Incentive Payment System (MIPS) eligible clinicians who perform the quality actions as defined by the numerator based on the services provided and the measure-specific denominator coding.

Measures Strata and Performance Rates:

This measure contains one strata defined by a single submission criteria.

This measure produces a single performance rate.

Implementation Considerations:

For the purposes of MIPS implementation, this patient-process measure is submitted a minimum of once per patient for the performance period. The most advantageous quality data code will be used if the measure is submitted more than once.

Telehealth

TELEHEALTH ELIGIBLE: This measure is appropriate for and applicable to the telehealth setting. Patient encounters conducted via telehealth using encounter code(s) found in the denominator encounter criteria are allowed for this measure. Therefore, if the patient meets all denominator criteria for a telehealth encounter, it would be appropriate to include them in the denominator eligible patient population. Telehealth eligibility is at the measure level for inclusion within the denominator eligible patient population and based on the measure specification definitions which are independent of changes to coding and/or billing practices.

Measure Submission:

The quality data codes listed do not need to be submitted by MIPS eligible clinicians, groups, or third party intermediaries that utilize this collection type for submissions; however, these codes may be submitted for those third party intermediaries that utilize Medicare Part B claims data. The coding provided to identify the measure criteria: Denominator or Numerator, may be an example of coding that could be used to identify patients that meet the intent of this clinical topic. When implementing this measure, please refer to the 'Reference Coding' section to determine if other codes or code languages that meet the intent of the criteria may also be used within the medical record to identify and/or assess patients. For more information regarding Application Programming Interface (API), please refer to the Quality Payment Program (QPP) website.

DENOMINATOR:

All patients, regardless of age, with a diagnosis of inflammatory bowel disease who initiated an anti-TNF agent during the performance period.

Definitions:

Initiated – Refers to the first dose of anti-TNF therapy.

DENOMINATOR NOTE:

**Signifies that this CPT Category I code is a non-covered service under the Medicare Part B Physician Fee Schedule (PFS). These non-covered services will not be counted in the denominator population for MIPS CQMs.*

Denominator Criteria (Eligible Cases):

All Patients, regardless of age during the performance period

AND

Diagnosis for inflammatory bowel disease (ICD-10-CM): K50.00, K50.011, K50.012, K50.013, K50.014, K50.018, K50.019, K50.10, K50.111, K50.112, K50.113, K50.114, K50.118, K50.119, K50.80, K50.811, K50.812, K50.813, K50.814, K50.818, K50.819, K50.90, K50.911, K50.912, K50.913, K50.914, K50.918, K50.919, K51.00, K51.011, K51.012, K51.013, K51.014, K51.018, K51.019, K51.20, K51.211, K51.212, K51.213, K51.214, K51.218, K51.219, K51.30, K51.311, K51.312, K51.313, K51.314, K51.318, K51.319, K51.40, K51.411, K51.412, K51.413, K51.414, K51.418, K51.419, K51.50, K51.511, K51.512, K51.513, K51.514, K51.518, K51.519, K51.80, K51.811, K51.812, K51.813, K51.814, K51.818, K51.819, K51.90, K51.911, K51.912, K51.913, K51.914, K51.918, K51.919, K52.3

AND

Patient encounter during the performance period (CPT): 98000, 98001, 98002, 98003, 98004, 98005, 98006, 98007, 98008, 98009, 98010, 98011, 98012, 98013, 98014, 98015, 98016, 99202, 99203, 99204, 99205, 99212, 99213, 99214, 99215, 99242*, 99243*, 99244*, 99245*, 99341, 99342, 99344, 99345, 99347, 99348, 99349, 99350, 99406, 99407, 99424, 99426

AND

Patient initiated an anti-TNF agent (HCPCS): G9914

Reference Coding:

Denominator Criteria for **Patient Initiated an anti-TNF agent [G9914]** may be defined by the following coding, however, other codes/code languages that meet the intent of this component may also be used:

C9249, J0717, J0718, J0135, J1602, J1745, Q5102, S9359, G8869 or CPT codes: 86317, 86704, 86706, 90636, 90723, 90744, 90746, 90747, 90748

NUMERATOR:

Patients who had HBV status assessed and results interpreted prior to initiating anti-TNF therapy.

Numerator Instructions:

HBV status must be assessed by one of the following: HBsAG, HBsAG neutralization, HBcAb total, HBsAB.

Numerator Options:

Performance Met:

Hepatitis B Virus (HBV) status assessed and results interpreted prior to initiating anti-TNF (tumor necrosis factor) therapy (**G9912**)

OR

Performance Met:

Patient has documented immunity to hepatitis B and initiating anti-TNF therapy (**G8869**)

OR

Denominator Exception:

Documented reason for not assessing Hepatitis B Virus (HBV) status (e.g. patient not initiating anti-TNF therapy, patient declined) prior to initiating anti-TNF therapy (**G9504**)

OR

Performance Not Met:

Hepatitis B Virus (HBV) status not assessed and results interpreted prior to initiating anti-TNF (tumor necrosis factor) therapy, reason not otherwise specified(**G9913**)

OR

Performance Not Met:

No record of HBV results documented (**G9915**)

RATIONALE:

Before initiating biologic anti-TNF therapy for a patient with IBD, it is essential to screen the patient for HBV, as research has documented reactivation of HBV after anti-TNF therapy. This is a patient safety measure.

Opportunity for improvement: While there are a limited number of studies that investigate gaps in care for patients with IBD, the research that does exist identifies opportunities for improvement in care areas: 1) there is a lack of adherence to documentation of HBV screening, most noticeably in the use of disease-modifying anti-TNF drugs, and variations in care by practice setting, geographic region and physician specialty.

See FDA package labeling for anti-TNF biological agents — golimumab, certolizumab pegol, infliximab and adalimumab. Reactivation of hepatitis B virus has been reported in patients who are carriers of this virus and are taking TNF blocker medicines. (Kaiser T, Moessner J, McHutchison JG, Tillmann HG. Life threatening liver disease during treatment with monoclonal antibodies. BMJ. 2009; 338:b508)

CLINICAL RECOMMENDATION STATEMENTS:

Infliximab can reactivate latent HBV. (Esteve et al. 2004).

REFERENCE:

Esteve M, Saro C, González-Huix F, Suarez F, Forné M, Viver JM. Chronic hepatitis B reactivation following infliximab therapy in Crohn's disease patients: need for primary prophylaxis. Gut. 2004 Sep; 53(9):1363-5.

Kaiser T, Moessner J, McHutchison JG, Tillmann HG. Life threatening liver disease during treatment with monoclonal antibodies. BMJ. 2009; 338:b508

COPYRIGHT:

Physician Performance Measures (Measures) and related data specifications have been developed by the American Gastroenterological Association (AGA) Institute.

These performance Measures are not clinical guidelines and do not establish a standard of medical care, nor have been tested for all potential applications. Neither the AGA, any of its affiliates, the American Medical Association (AMA), nor its members shall be responsible for any use of the Measures.

Measures are subject to review and may be revised or rescinded at any time by the AGA. The Measures may not be altered without the prior written approval of the AGA. Measures developed by the AGA, while copyrighted, can be reproduced and distributed, without modification, for noncommercial purposes, e.g., use by health care providers in connection with their practices. Commercial use is defined as the sale, license, or distribution of the Measures for commercial gain, or incorporation of the Measures into a product or service that is sold, licensed or distributed for commercial gain. Commercial uses of the Measures require a license agreement between the user and the AGA.

THE MEASURES AND SPECIFICATIONS ARE PROVIDED “AS IS” WITHOUT WARRANTY OF ANY KIND

2025 American Gastroenterological Association. All Rights Reserved.

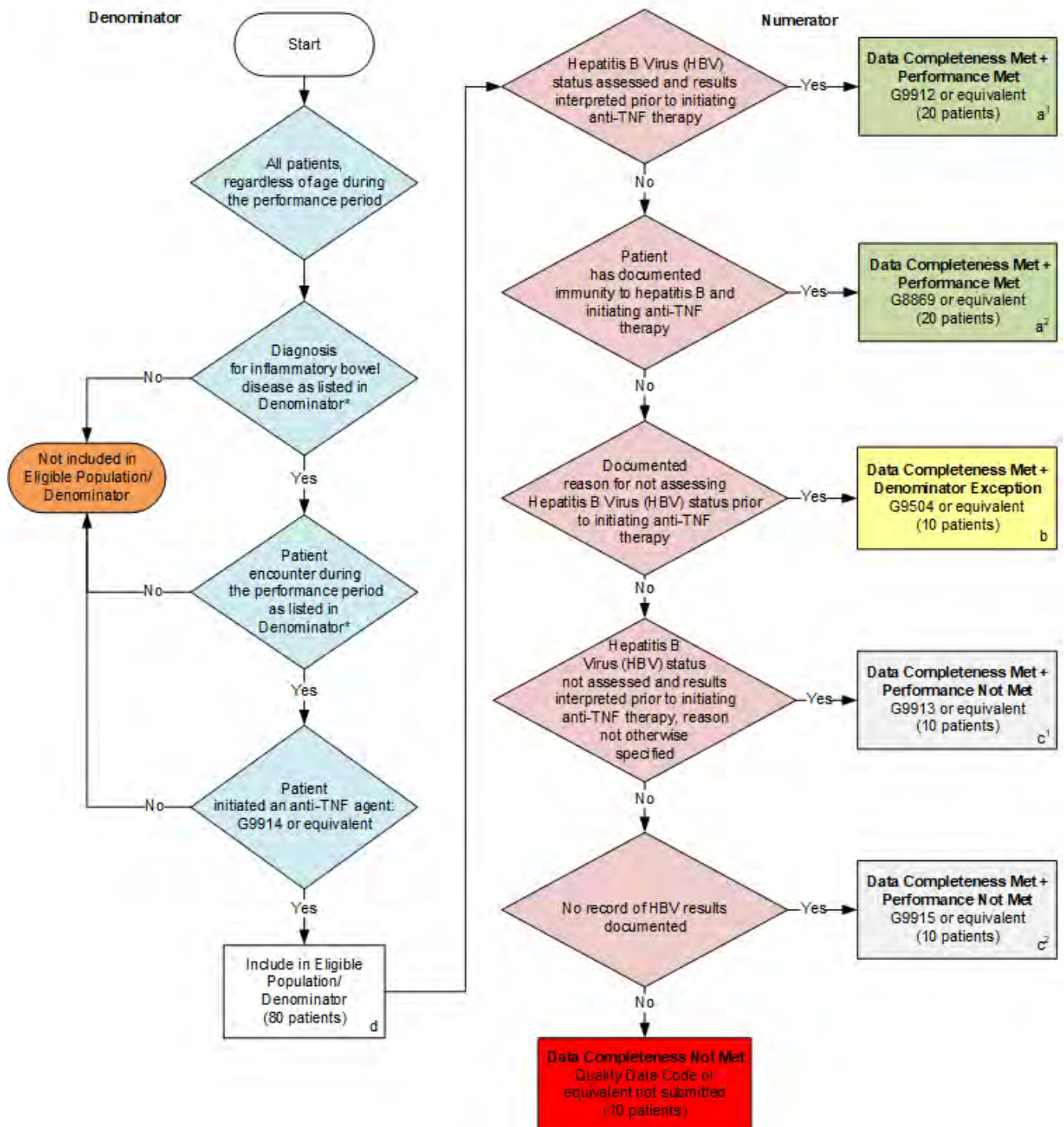
Limited proprietary coding is contained in the Measure specifications for convenience. Users of the proprietary code sets should obtain all necessary licenses from the owners of these code sets. The AGA, its affiliate, AMA, and its members disclaim all liability for use or accuracy of any current procedural terminology (CPT) or other coding contained in the specifications.

CPT® contained in the Measure specifications is copyright 2004-2025 American Medical Association. LOINC® is copyright 2004-2025 Regenstrief Institute, Inc. This material contains SNOMED Clinical Terms® (SNOMED CT®) copyright 2025 International Health Terminology Standards Development Organization. ICD-10 is copyright 2025 World Health

Organization. All Rights Reserved.

**2026 Clinical Quality Measure Flow for Quality ID #275:
Inflammatory Bowel Disease (IBD): Assessment of Hepatitis B Virus (HBV) Status Before
Initiating Anti-TNF (Tumor Necrosis Factor) Therapy**

Disclaimer: Refer to the measure specification for specific coding and instructions to submit this measure.



SAMPLE CALCULATIONS

Data Completeness=

$$\frac{\text{Performance Met (a}^1\text{+a}^2\text{=40 patients)} + \text{Denominator Exception (b=10 patients)} + \text{Performance Not Met (c}^1\text{+c}^2\text{=20 patients)}}{\text{Eligible Population / Denominator (d=80 patients)}} = \frac{70 \text{ patients}}{80 \text{ patients}} = 87.50\%$$

Performance Rate=

$$\frac{\text{Performance Met (a}^1\text{+a}^2\text{=40 patients)}}{\text{Data Completeness Numerator (70 patients) – Denominator Exception (b=10 patients)}} = \frac{40 \text{ patients}}{60 \text{ patients}} = 66.67\%$$

*See the posted measure specification for specific coding and instructions to submit this measure.

NOTE: Submission Frequency: Patient-Process

CPT only copyright 2025 American Medical Association. All rights reserved.
The measure diagrams were developed by CMS as a supplemental resource to be used in conjunction with the measure specifications. They should not be used alone or as a substitution for the measure specification.

v10

**2026 Clinical Quality Measure Flow Narrative for Quality ID #275:
Inflammatory Bowel Disease (IBD): Assessment of Hepatitis B Virus (HBV) Status
Before Initiating Anti-TNF (Tumor Necrosis Factor) Therapy**

Disclaimer: Refer to the measure specification for specific coding and instructions to submit this measure.

1. Start with Denominator
2. All patients, regardless of age during the performance period
3. Check *Diagnosis for inflammatory bowel disease as listed in Denominator**:
 - a. If *Diagnosis for inflammatory bowel disease as listed in Denominator** equals No, do not include in *Eligible Population/Denominator*. Stop processing.
 - b. If *Diagnosis for inflammatory bowel disease as listed in Denominator** equals Yes, proceed to check *Patient encounter during the performance period as listed in Denominator**.
4. Check *Patient encounter during the performance period as listed in Denominator**:
 - a. If *Patient encounter during the performance period as listed in Denominator** equals No, do not include in *Eligible Population/Denominator*. Stop processing.
 - b. If *Patient encounter during the performance period as listed in Denominator** equals Yes, proceed to check *Patient initiated an anti-TNF agent*.
5. Check *Patient initiated an anti-TNF agent*:
 - a. If *Patient initiated an anti-TNF agent* equals No, do not include in *Eligible Population/Denominator*.
 - b. If *Patient initiated an anti-TNF agent* equals Yes, include in *Eligible Population/Denominator*.
6. Denominator Population:
 - Denominator Population is all Eligible Patients in the Denominator. Denominator is represented as Denominator in the Sample Calculation listed at the end of this document. Letter d equals 80 patients in the Sample Calculation.
7. Start Numerator
8. Check *Hepatitis B Virus (HBV) status assessed and results interpreted prior to initiating anti-TNF therapy*:
 - a. If *Hepatitis B Virus (HBV) status assessed and results interpreted prior to initiating anti-TNF therapy* equals Yes, include in *Data Completeness Met and Performance Met*.
 - *Data Completeness Met and Performance Met* is represented in the Data Completeness and Performance Rate in the Sample Calculation listed at the end of this document. Letter a¹ equals 20 patients in Sample Calculation.
 - b. If *Hepatitis B Virus (HBV) status assessed and results interpreted prior to initiating anti-TNF therapy* equals No, proceed to check *Patient has documented immunity to hepatitis B and initiating anti-TNF therapy*.

9. Check *Patient has documented immunity to hepatitis B and initiating anti-TNF therapy*.
 - a. If *Patient has documented immunity to hepatitis B and initiating anti-TNF therapy* equals Yes, include in *Data Completeness Met and Performance Met*.
 - *Data Completeness Met and Performance Met* is represented in the Data Completeness and Performance Rate in the Sample Calculation listed at the end of this document. Letter a² equals 20 patients in the Sample Calculation.
 - b. If *Patient has documented immunity to hepatitis B and initiating anti-TNF therapy* equals No, proceed to check *Documented reason for not assessing Hepatitis B Virus (HBV) status prior to initiating anti-TNF therapy*.
10. Check *Documented reason for not assessing Hepatitis B Virus (HBV) status prior to initiating anti-TNF therapy*.
 - a. If *Documented reason for not assessing Hepatitis B Virus (HBV) status prior to initiating anti-TNF therapy* equals Yes, include in *Data Completeness Met and Denominator Exception*.
 - *Data Completeness Met and Denominator Exception* is represented in the Data Completeness and Performance Rate in the Sample Calculation listed at the end of this document. Letter b equals 10 patients in the Sample Calculation.
 - b. If *Documented reason for not assessing Hepatitis B Virus (HBV) status prior to initiating anti-TNF therapy* equals No, proceed to check *Hepatitis B Virus (HBV) status not assessed and results interpreted prior to initiating anti-TNF therapy, reason not otherwise specified*.
11. Check *Hepatitis B Virus (HBV) status not assessed and results interpreted prior to initiating anti-TNF therapy, reason not otherwise specified*.
 - a. If *Hepatitis B Virus (HBV) status not assessed and results interpreted prior to initiating anti-TNF therapy, reason not otherwise specified* equals Yes, include in *Data Completeness Met and Performance Not Met*.
 - *Data Completeness Met and Performance Not Met* is represented in the Data Completeness in the Sample Calculation listed at the end of this document. Letter c¹ equals 10 patients in the Sample Calculation.
 - b. If *Hepatitis B Virus (HBV) status not assessed and results interpreted prior to initiating anti-TNF therapy, reason not otherwise specified* equals No, proceed to check *No record of HBV results documented*.
12. Check *No record of HBV results documented*.
 - a. If *No record of HBV results documented* equals Yes, include in *Data Completeness Met and Performance Not Met*.
 - *Data Completeness Met and Performance Not Met* is represented in the Data Completeness in the Sample Calculation listed at the end of this document. Letter c² equals 10 patients in the Sample Calculation.
 - b. If *No record of HBV results documented* equals No, proceed to check *Data Completeness Not Met*.

13. Check *Data Completeness Not Met*.

- If *Data Completeness Not Met*, the Quality Data Code or equivalent was not submitted. 10 patients have been subtracted from the Data Completeness Numerator in the Sample Calculation.

Sample Calculations

Data Completeness equals Performance Met (a^1 plus a^2 equals 40 patients) plus Denominator Exception (b equals 10 patients) plus Performance Not Met (c^1 plus c^2 equals 20 patients) divided by Eligible Population/Denominator (d equals 80 patients). All equals 70 patients divided by 80 patients. All equals 87.50 percent.

Performance Rate equals Performance Met (a^1 plus a^2 equals 40 patients) divided by Data Completeness Numerator (70 patients) minus Denominator Exception (b equals 10 patients). All equals 40 patients divided by 60 patients. All equals 66.67 percent.

*See the posted measure specification for specific coding and instructions to submit this measure.

NOTE: Submission Frequency: Patient-Process

The measure diagrams were developed by CMS as a supplemental resource to be used in conjunction with the measure specifications. They should not be used alone or as a substitution for the measure specification.