

## Quality ID #178: Rheumatoid Arthritis (RA): Functional Status Assessment

### 2026 COLLECTION TYPE:

MERIT-BASED INCENTIVE PAYMENT SYSTEM (MIPS) CLINICAL QUALITY MEASURE (COM)

### MEASURE TYPE:

Process

### DESCRIPTION:

Percentage of patients aged 18 years and older with two or more encounters with a diagnosis of rheumatoid arthritis (RA) at least 90 days apart for whom a functional status assessment was performed at least once during the performance period.

### INSTRUCTIONS:

#### **Reporting Frequency:**

This measure is to be submitted a minimum of once per performance period for denominator eligible cases as defined in the denominator criteria

#### **Intent and Clinical Applicability:**

The intent of this measure is to reflect the quality of services provided for patients aged 18 years and older with RA. This measure may be submitted by Merit-based Incentive Payment System (MIPS) eligible clinicians who perform the quality actions as defined by the numerator based on the services provided and the measure-specific denominator coding.

#### **Measure Strata and Performance Rates**

This measure contains one strata defined by a single submission criteria.

This measure produces a single performance rate.

#### **Implementation Considerations:**

For the purposes of MIPS implementation, this patient-process measure is submitted a minimum of once per patient for the performance period. The most advantageous quality data code will be used if the measure is submitted more than once.

#### **Telehealth:**

**TELEHEALTH ELIGIBLE:** This measure is appropriate for and applicable to the telehealth setting. Patient encounters conducted via telehealth using encounter code(s) found in the denominator encounter criteria are allowed for this measure. Therefore, if the patient meets all denominator criteria for a telehealth encounter, it would be appropriate to include them in the denominator eligible patient population. Telehealth eligibility is at the measure level for inclusion within the denominator eligible patient population and based on the measure specification definitions which are independent of changes to coding and/or billing practices.

#### **Measure Submission:**

The quality data codes listed do not need to be submitted by MIPS eligible clinicians, groups, or third party intermediaries that utilize this collection type for submissions; however, these codes may be submitted for those third party intermediaries that utilize Medicare Part B claims data. The coding provided to identify the measure criteria: Denominator or Numerator, may be an example of coding that could be used to identify patients that meet the intent of this clinical topic. When implementing this measure, please refer to the 'Reference Coding' section to determine if other codes or code languages that meet the intent of the criteria may also be used within the medical record to identify and/or assess patients. For more information regarding Application Programming Interface (API), please refer to the Quality Payment Program (QPP) website.

## **DENOMINATOR:**

Patients aged 18 years and older with two or more RA diagnoses documented at least 90 days apart with at least one encounter with an RA diagnosis occurring during the performance period and an additional encounter with an RA diagnosis occurring in the performance period or prior performance period.

### **Definitions:**

**Encounter** – An encounter during the performance period where one of the CPT or HCPCS codes listed in the patient encounter criteria is used.

**Additional encounter** – An additional encounter during the performance period or prior performance period where one of the CPT or HCPCS codes listed in the patient encounter is used to confirm an RA diagnosis with ICD-10-CM diagnosis codes as listed in the Denominator criteria.

### **DENOMINATOR NOTE:**

*\*Signifies that this HCPCS code is a non-covered service under the Medicare Part B Physician Fee Schedule (PFS). These non-covered services should be counted in the denominator population for the MIPS CQMs.*

### **Denominator Criteria (Eligible Cases):**

Patients aged ≥ 18 years on date of encounter

#### **AND**

**Diagnosis for rheumatoid arthritis(RA) (ICD-10-CM):** M05.A, M05.00, M05.011, M05.012, M05.019, M05.021, M05.022, M05.029, M05.031, M05.032, M05.039, M05.041, M05.042, M05.049, M05.051, M05.052, M05.059, M05.061, M05.062, M05.069, M05.071, M05.072, M05.079, M05.09, M05.10, M05.111, M05.112, M05.119, M05.121, M05.122, M05.129, M05.131, M05.132, M05.139, M05.141, M05.142, M05.149, M05.151, M05.152, M05.159, M05.161, M05.162, M05.169, M05.171, M05.172, M05.179, M05.19, M05.20, M05.211, M05.212, M05.219, M05.221, M05.222, M05.229, M05.231, M05.232, M05.239, M05.241, M05.242, M05.249, M05.251, M05.252, M05.259, M05.261, M05.262, M05.269, M05.271, M05.272, M05.279, M05.29, M05.30, M05.311, M05.312, M05.319, M05.321, M05.322, M05.329, M05.331, M05.332, M05.339, M05.341, M05.342, M05.349, M05.351, M05.352, M05.359, M05.361, M05.362, M05.369, M05.371, M05.372, M05.379, M05.39, M05.40, M05.411, M05.412, M05.419, M05.421, M05.422, M05.429, M05.431, M05.432, M05.439, M05.441, M05.442, M05.449, M05.451, M05.452, M05.459, M05.461, M05.462, M05.469, M05.471, M05.472, M05.479, M05.49, M05.50, M05.511, M05.512, M05.519, M05.521, M05.522, M05.529, M05.531, M05.532, M05.539, M05.541, M05.542, M05.549, M05.551, M05.552, M05.559, M05.561, M05.562, M05.569, M05.571, M05.572, M05.579, M05.59, M05.60, M05.611, M05.612, M05.619, M05.621, M05.622, M05.629, M05.631, M05.632, M05.639, M05.641, M05.642, M05.649, M05.651, M05.652, M05.659, M05.661, M05.662, M05.669, M05.671, M05.672, M05.679, M05.69, M05.7A, M05.70, M05.711, M05.712, M05.719, M05.721, M05.722, M05.729, M05.731, M05.732, M05.739, M05.741, M05.742, M05.749, M05.751, M05.752, M05.759, M05.761, M05.762, M05.769, M05.771, M05.772, M05.779, M05.79, M05.8A, M05.80, M05.811, M05.812, M05.819, M05.821, M05.822, M05.829, M05.831, M05.832, M05.839, M05.841, M05.842, M05.849, M05.851, M05.852, M05.859, M05.861, M05.862, M05.869, M05.871, M05.872, M05.879, M05.89, M05.9, M06.0A, M06.00, M06.011, M06.012, M06.019, M06.021, M06.022, M06.029, M06.031, M06.032, M06.039, M06.041, M06.042, M06.049, M06.051, M06.052, M06.059, M06.061, M06.062, M06.069, M06.071, M06.072, M06.079, M06.08, M06.09, M06.20, M06.211, M06.212, M06.219, M06.221, M06.222, M06.229, M06.231, M06.232, M06.239, M06.241, M06.242, M06.249, M06.251, M06.252, M06.259, M06.261, M06.262, M06.269, M06.271, M06.272, M06.279, M06.28, M06.29, M06.30, M06.311, M06.312, M06.319, M06.321, M06.322, M06.329, M06.331, M06.332, M06.339, M06.341, M06.342, M06.349, M06.351, M06.352, M06.359, M06.361, M06.362, M06.369, M06.371, M06.372, M06.379, M06.38, M06.39, M06.8A, M06.80, M06.811, M06.812, M06.819, M06.821, M06.822, M06.829, M06.831, M06.832, M06.839, M06.841, M06.842, M06.849, M06.851, M06.852, M06.859, M06.861, M06.862, M06.869, M06.871, M06.872, M06.879, M06.88, M06.89, M06.9

#### **AND**

**Patient encounter during the performance period (CPT or HCPCS):** 98000, 98001, 98002, 98003, 98004, 98005, 98006, 98007, 98008, 98009, 98010, 98011, 98012, 98013, 98014, 98015, 98016, 99202, 99203, 99204, 99205, 99212, 99213, 99214, 99215, 99341, 99342, 99344, 99345, 99347, 99348, 99349, 99350, 99424, 99426,

G0402, G0468\*

**AND**

An additional encounter with an RA diagnosis during the performance period or prior performance period that is at least 90 days before or after an encounter with an RA diagnosis during the performance period:  
M1375

**NUMERATOR:**

Patients for whom a functional status assessment using an ACR-preferred, patient-reported functional status assessment tool was performed at least once during the performance period.

**Definition:**

**Functional Status Assessment** – This measure assesses if physicians are using a standardized tool to assess the impact of RA on patient activities of daily living. Functional status should be assessed using one of the following ACR-preferred tools to fulfill the measure requirements:

- PROMIS Physical Function 10-item (PROMIS PF10a)
- Health Assessment Questionnaire-II (HAQ-II)
- Multi-Dimensional Health Assessment Questionnaire (MD-HAQ)

**Numerator Options:**

**OR**

***Performance Met:***

Functional status assessed (**1170F**)

***Performance Not Met:***

Functional status not assessed, reason not otherwise specified (**1170F with 8P**)

**RATIONALE:**

Functional limitations are a significant and disruptive complication for patients living with RA. Assessments of functional limitations are used to assess prognosis and guide treatment and therapy decisions. According to the ACR's RA treatment guidelines, functional status assessment using a standardized, validated measure should be performed routinely for RA patients, at least once per year, but more frequently if disease is active.

**CLINICAL RECOMMENDATION STATEMENTS:**

The management of RA is an iterative process, and patients should be routinely reassessed for evidence of disease or limitation of function with significant alteration of joint anatomy. Baseline evaluation of disease activity and damage in patients with rheumatoid arthritis through evaluation of functional status or quality of life assessments using standardized questionnaires, a physician's global assessment of disease activity, or patient's global assessment of disease activity. The initial evaluation of the patient with RA should document symptoms of active disease (i.e., presence of joint pain, duration of morning stiffness, degree of fatigue), functional status, objective evidence of disease activity (i.e., synovitis, as assessed by tender and swollen joint counts, and the ESR or CRP level), and mechanical joint problems.

At each follow up visit, the physician must assess whether the disease is active or inactive. Symptoms of inflammatory (as contrasted with mechanical) joint disease, which include prolonged morning stiffness, duration of fatigue, and active synovitis on joint examination, indicate active disease and necessitate consideration of changing the treatment program. Occasionally, findings of the joint examination alone may not adequately reflect disease activity and structural damage; therefore, periodic measurements of the ESR or CRP level and regular assessments of functional status, as well as periodic radiographic examinations of involved joints should be performed. It is important to determine whether a decline in function is the result of inflammation, mechanical damage, or both; treatment strategies will differ accordingly. (ACR, 2002)

The ACR also conducted an extensive multi-year project, involving systematic literature reviews, expert consensus ratings, and national surveys to reach consensus on which RA patient-reported functional status assessments tools are valid, reliable, and responsive, and feasible to implement in routine clinical practice, resulting in three ACR-preferred

functional status assessment tools (cite: <https://rheumatology.org/api/asset/blt65c03d5b72bc6cc2>).

## **REFERENCES:**

Barber, C. E. H., Zell, J., Yazdany, J., Davis, A. M., Cappelli, L., Ehrlich-Jones, L., Everix, D., Thorne, J. C., Bohm, V., Suter, L., Limanni, A., & Michaud, K. (2019). 2019 American College of Rheumatology recommended patient-reported functional status assessment measures in rheumatoid arthritis. *Arthritis Care & Research*, 71(12), 1531–1539.  
<https://doi.org/10.1002/acr.24040>

## **COPYRIGHT:**

The Measures are not clinical guidelines, do not establish a standard of medical care, and have not been tested for all potential applications.

The Measures, while copyrighted, can be reproduced and distributed, without modification, for noncommercial purposes, e.g., for use by health care providers in connection with their practices.

Any commercial use of the Measures requires a license agreement between the user and the American College of Rheumatology (ACR). Commercial use is defined as the sale, license, or distribution of the Measures for commercial gain, or incorporation of the Measures into a product or service that is sold, licensed or distributed for commercial gain.

Neither the ACR, nor its members shall be responsible for any use of the Measures.

The PCPI's and AMA's significant past efforts and contributions to the development and updating of the Measures are acknowledged. ACR is solely responsible for the review and enhancement ("Maintenance") of the Measures as of May 22, 2019.

ACR encourages use of the Measures by other health care professionals, where appropriate.

## **THE MEASURES AND SPECIFICATIONS ARE PROVIDED "AS IS" WITHOUT WARRANTY OF ANY KIND.**

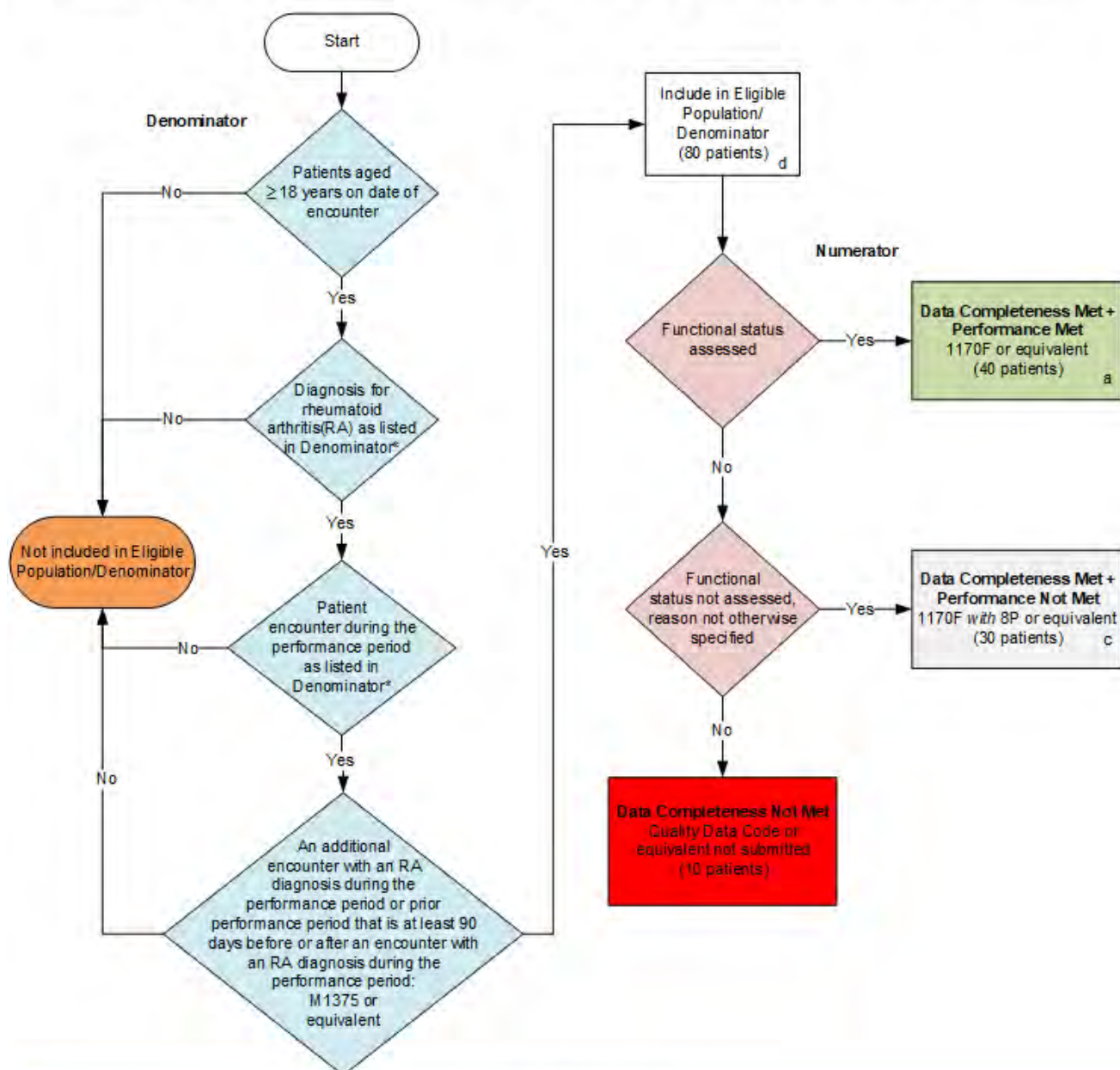
© 2015-2024 American College of Rheumatology. All Rights Reserved. Applicable FARS/DFARS Restrictions Apply to Government Use.

Limited proprietary coding may be contained in the Measure specifications for convenience. A license agreement must be entered prior to a third party's use of Current Procedural Terminology (CPT®) or other proprietary code set contained in the Measures. Any other use of CPT or other coding by the third party is strictly prohibited. ACR, the AMA, and former members of the PCPI disclaim all liability for use or accuracy of any CPT or other coding contained in the specifications.

CPT® contained in the Measure specifications is copyright 2004-2024 American Medical Association. LOINC® copyright 2004-2023 Regenstrief Institute, Inc. SNOMED CLINICAL TERMS (SNOMED CT®) copyright 2004-2024 International Health Terminology Standards Development Organisation. ICD-10 is copyright 2024 World Health Organization. All Rights Reserved.

## 2026 Clinical Quality Measure Flow for Quality ID #178: Rheumatoid Arthritis (RA): Functional Status Assessment

**Disclaimer:** Refer to the measure specification for specific coding and instructions to submit this measure.



### SAMPLE CALCULATIONS

**Data Completeness=**  

$$\frac{\text{Performance Met (a=40 patients)} + \text{Performance Not Met (c=30 patients)}}{\text{Eligible Population / Denominator (d=80 patients)}} = \frac{70 \text{ patients}}{80 \text{ patients}} = 87.50\%$$

**Performance Rate=**  

$$\frac{\text{Performance Met (a=40 patients)}}{\text{Data Completeness Numerator (70 patients)}} = \frac{40 \text{ patients}}{70 \text{ patients}} = 57.14\%$$

\*See the posted measure specification for specific coding and instructions to submit this measure.

NOTE : Submission Frequency: Patient-Process

CPT only copyright 2025 American Medical Association. All rights reserved.  
 The measure diagrams were developed by CMS as a supplemental resource to be used in conjunction with the measure specifications. They should not be used alone or as a substitution for the measure specification.  
 v10

**2026 Clinical Quality Measure Flow Narrative for Quality ID #178:  
Rheumatoid Arthritis (RA): Functional Status Assessment**

*Disclaimer: Refer to the measure specification for specific coding and instructions to submit this measure.*

1. Start with Denominator
2. Check *Patients aged greater than or equal to 18 years on date of encounter*:
  - a. If *Patients aged greater than or equal to 18 years on date of encounter* equals No, do not include in *Eligible Population/Denominator*. Stop processing.
  - b. If *Patients aged greater than or equal to 18 years on date of encounter* equals Yes, proceed to check *Diagnosis for rheumatoid arthritis as listed in Denominator\**.
3. Check *Diagnosis for rheumatoid arthritis(RA) as listed in Denominator\**:
  - a. If *Diagnosis for rheumatoid arthritis(RA) as listed in Denominator\** equals No, do not include in *Eligible Population/Denominator*. Stop processing.
  - b. If *Diagnosis for rheumatoid arthritis(RA) as listed in Denominator\** equals Yes, proceed to check *Patient encounter during the performance period as listed in Denominator\**.
4. Check *Patient encounter during the performance period as listed in Denominator\**:
  - a. If *Patient encounter during the performance period as listed in Denominator\** equals No, do not include in *Eligible Population/Denominator*. Stop processing.
  - b. If *Patient encounter during the performance period as listed in Denominator\** equals Yes, proceed to check *An additional encounter with an RA diagnosis during the performance period or prior performance period that is at least 90 days before or after an encounter with an RA diagnosis during the performance period*.
5. Check *An additional encounter with an RA diagnosis during the performance period or prior performance period that is at least 90 days before or after an encounter with an RA diagnosis during the performance period*.
  - a. If *An additional encounter with an RA diagnosis during the performance period or prior performance period that is at least 90 days before or after an encounter with an RA diagnosis during the performance period*, equals No, do not include in the *Eligible Population/ Denominator*. Stop processing.
  - b. If *An additional encounter with an RA diagnosis during the performance period or prior performance period that is at least 90 days before or after an encounter with an RA diagnosis during the performance period* equals, Yes, include in *Eligible Population/Denominator*.
6. Denominator Population:
  - Denominator Population is all Eligible Patients in the Denominator. Denominator is represented as Denominator in the Sample Calculation listed at the end of this document. Letter d equals 80 patients in the Sample Calculation.
7. Start Numerator
8. Check *Functional status assessed*:
  - a. If *Functional status assessed* equals Yes, include in *Data Completeness Met and Performance Met*.
    - *Data Completeness Met and Performance Met* letter is represented in the Data

Completeness and Performance Rate in the Sample Calculation listed at the end of this document. Letter a equals 40 patients in the Sample Calculation.

- b. If *Functional status assessed* equals No, proceed to *Functional status not assessed, reason not otherwise specified*.
  9. Check *Functional status not assessed, reason not otherwise specified*:
    - a. If *Functional status not assessed, reason not otherwise specified* equals Yes, include in *Data Completeness Met and Performance Not Met*.
      - *Data Completeness Met and Performance Not Met* letter is represented in the Data Completeness in the Sample Calculation listed at the end of this document. Letter c equals 30 patients in the Sample Calculation.
    - b. If *Functional status not assessed, reason not otherwise specified* equals No, proceed to check *Data Completeness Not Met*.
  10. Check *Data Completeness Not Met*:
    - If *Data Completeness Not Met*, the Quality Data Code or equivalent was not submitted. 10 patients have been subtracted from the Data Completeness Numerator in the Sample Calculation.

### Sample Calculations

Data Completeness equals Performance Met (a equals 40 patients) plus Performance Not Met (c equals 30 patients) divided by Eligible Population/Denominator (d equals 80 patients). All equals 70 patients divided by 80 patients. All equals 87.50 percent.

Performance Rate equals Performance Met (a equals 40 patients) divided by Data Completeness Numerator (70 patients). All equals 40 patients divided by 70 patients. All equals 57.14 percent.

\*See the posted measure specification for specific coding and instructions to submit this measure.

NOTE: Submission Frequency: Patient-Process

The measure diagrams were developed by CMS as a supplemental resource to be used in conjunction with the measure specifications. They should not be used alone or as a substitution for the measure specification.