

## Quality ID #126 Diabetes Mellitus: Diabetic Foot and Ankle Care, Peripheral Neuropathy — Neurological Evaluation

### 2026 COLLECTION TYPE:

MERIT-BASED INCENTIVE PAYMENT SYSTEM (MIPS) CLINICAL QUALITY MEASURE (CQM)

### MEASURE TYPE:

Process

### DESCRIPTION:

Percentage of patients aged 18 years and older with a diagnosis of diabetes mellitus who had a neurological examination of their lower extremities within 12 months.

### INSTRUCTIONS:

#### Reporting Frequency:

This measure is to be submitted a minimum of once per performance period for denominator eligible cases as defined in the denominator criteria.

#### Intent and Clinician Applicability:

This measure is intended to reflect the quality of services provided for patients with a diagnosis of diabetes mellitus. This measure may be submitted by non-medical doctor/doctor of osteopathic medicine (MD/DO) Merit-based Incentive Payment System (MIPS) eligible clinicians who perform the quality actions described in the measure based on the services provided and the measure-specific denominator coding.

#### Measure Strata and Performance Rates:

This measure contains one strata defined by a single submission criteria.

This measure produces a single performance rate.

#### Implementation Considerations:

For the purposes of MIPS implementation, this patient-process measure is submitted a minimum of once per patient during the performance period. The most advantageous quality data code will be used if the measure is submitted more than once.

Evaluation of neurological status in patients with diabetes to assign risk category and therefore have appropriate foot and ankle care to prevent ulcerations and infections ultimately reduces the number and severity of amputations that occur. Risk categorization and follow up treatment plan should be done according to the following table:

**Table 1 - Risk Categorization System**

Category	Risk Profile	Evaluation Frequency
0	Normal	Annual
1	Peripheral Neuropathy (LOPS)	Semi-annual
2	Neuropathy, deformity, and/or PAD	Quarterly
3	Previous ulcer or amputation	Monthly to quarterly

#### Telehealth:

**NOT TELEHEALTH ELIGIBLE:** This measure is not appropriate for nor applicable to the telehealth setting. Patient encounters for this measure conducted via telehealth should be removed from the denominator eligible patient population. Therefore, if the patient meets all denominator criteria but the encounter is conducted via telehealth, it would be appropriate to remove them from the denominator eligible patient population. Telehealth eligibility is at the measure level for inclusion within the denominator eligible patient population and based on the measure specification definitions which are independent of changes to coding and/or billing practices.

**Measure Submission:**

The quality data codes listed do not need to be submitted by MIPS eligible clinicians, groups, or third party intermediaries that utilize this collection type for submissions; however, these codes may be submitted for those third party intermediaries that utilize Medicare Part B claims data. The coding provided to identify the measure criteria: Denominator or Numerator, may be an example of coding that could be used to identify patients that meet the intent of this clinical topic. When implementing this measure, please refer to the 'Reference Coding' section to determine if other codes or code languages that meet the intent of the criteria may also be used within the medical record to identify and/or assess patients. For more information regarding Application Programming Interface (API), please refer to the Quality Payment Program (QPP) website.

**DENOMINATOR:**

All patients aged 18 years and older with a diagnosis of diabetes mellitus.

**Denominator Criteria (Eligible Cases):**

Patients aged  $\geq 18$  years on date of encounter

**AND**

**Diagnosis for diabetes on date of encounter (ICD-10-CM):** E10.10, E10.11, E10.21, E10.22, E10.29, E10.311, E10.319, E10.3211, E10.3212, E10.3213, E10.3219, E10.3291, E10.3292, E10.3293, E10.3299, E10.3311, E10.3312, E10.3313, E10.3319, E10.3391, E10.3392, E10.3393, E10.3399, E10.3411, E10.3412, E10.3413, E10.3419, E10.3491, E10.3492, E10.3493, E10.3499, E10.3511, E10.3512, E10.3513, E10.3519, E10.3521, E10.3522, E10.3523, E10.3529, E10.3531, E10.3532, E10.3533, E10.3539, E10.3541, E10.3542, E10.3543, E10.3549, E10.3551, E10.3552, E10.3553, E10.3559, E10.3591, E10.3592, E10.3593, E10.3599, E10.37X1, E10.37X2, E10.37X3, E10.37X9, E10.36, E10.39, E10.40, E10.41, E10.42, E10.43, E10.44, E10.49, E10.51, E10.52, E10.59, E10.610, E10.618, E10.620, E10.621, E10.622, E10.628, E10.630, E10.638, E10.641, E10.649, E10.65, E10.69, E10.8, E10.9, E10.A0, E10.A1, E10.A2, E11.A, E11.00, E11.01, E11.10, E11.11, E11.21, E11.22, E11.29, E11.311, E11.319, E11.3211, E11.3212, E11.3213, E11.3219, E11.3291, E11.3292, E11.3293, E11.3299, E11.3311, E11.3312, E11.3313, E11.3319, E11.3391, E11.3392, E11.3393, E11.3399, E11.3411, E11.3412, E11.3413, E11.3419, E11.3491, E11.3492, E11.3493, E11.3499, E11.3511, E11.3512, E11.3513, E11.3519, E11.3521, E11.3522, E11.3523, E11.3529, E11.3531, E11.3532, E11.3533, E11.3539, E11.3541, E11.3542, E11.3543, E11.3549, E11.3551, E11.3552, E11.3553, E11.3559, E11.3591, E11.3592, E11.3593, E11.3599, E11.37X1, E11.37X2, E11.37X3, E11.37X9, E11.36, E11.39, E11.40, E11.41, E11.42, E11.43, E11.44, E11.49, E11.51, E11.52, E11.59, E11.610, E11.618, E11.620, E11.621, E11.622, E11.628, E11.630, E11.638, E11.641, E11.649, E11.65, E11.69, E11.8, E11.9, E13.00, E13.01, E13.10, E13.11, E13.21, E13.22, E13.29, E13.311, E13.319, E13.3211, E13.3212, E13.3213, E13.3219, E13.3291, E13.3292, E13.3293, E13.3299, E13.3311, E13.3312, E13.3313, E13.3319, E13.3391, E13.3392, E13.3393, E13.3399, E13.3411, E13.3412, E13.3413, E13.3419, E13.3491, E13.3492, E13.3493, E13.3499, E13.3511, E13.3512, E13.3513, E13.3519, E13.3521, E13.3522, E13.3523, E13.3529, E13.3531, E13.3532, E13.3533, E13.3539, E13.3541, E13.3542, E13.3543, E13.3549, E13.3551, E13.3552, E13.3553, E13.3559, E13.3591, E13.3592, E13.3593, E13.3599, E13.37X1, E13.37X2, E13.37X3, E13.37X9, E13.36, E13.39, E13.40, E13.41, E13.42, E13.43, E13.44, E13.49, E13.51, E13.52, E13.59, E13.610, E13.618, E13.620, E13.621, E13.622, E13.628, E13.630, E13.638, E13.641, E13.649, E13.65, E13.69, E13.8, E13.9

**AND**

**Patient encounter during the performance period (CPT):** 11042, 11043, 11044, 11055, 11056, 11057, 11719, 11720, 11721, 11730, 11740, 97161, 97162, 97163, 97164, 97597, 97802, 97803, 99202, 99203, 99204, 99205, 99212, 99213, 99214, 99215, 99304, 99305, 99306, 99307, 99308, 99309, 99310, 99341, 99342, 99344, 99345, 99347, 99348, 99349, 99350

**WITHOUT**

Encounters conducted via telehealth: M1426

**AND NOT****DENOMINATOR EXCLUSION:**

Clinician documented that patient was not an eligible candidate for lower extremity neurological exam measure, for example patient bilateral amputee; patient has condition that would not allow them to

accurately respond to a neurological exam (dementia, Alzheimer's, etc.); patient has previously documented diabetic peripheral neuropathy with loss of protective sensation: G2178

**NUMERATOR:**

Patients who had a lower extremity neurological exam performed at least once within 12 months.

**Definition:**

**Lower Extremity Neurological Exam** – Consists of a documented evaluation of motor and sensory abilities and should include: 10-g monofilament plus testing any one of the following: vibration using 128-Hz tuning fork, pinprick sensation, ankle reflexes, or vibration perception threshold; however, the clinician should perform all necessary tests to make the proper evaluation.

**NUMERATOR NOTE:**

*To determine performance met, the lower extremity neurological exam could be performed and documented on the date of the denominator eligible encounter or within the 12-month lookback period from the date of the denominator eligible encounter.*

**Numerator Options:**

**Performance Met:**

Lower extremity neurological exam performed and documented (G8404)

**OR**

**Denominator Exception:**

Clinician documented that patient had medical reason for not performing lower extremity neurological exam (G2179)

**OR**

**Performance Not Met:**

Lower extremity neurological exam not performed (G8405)

**RATIONALE:**

Foot ulceration is the most common single precursor to lower extremity amputations among persons with diabetes. Treatment of infected foot wounds accounts for up to one-quarter of all inpatient hospital admissions for people with diabetes in the United States. Peripheral sensory neuropathy in the absence of perceived trauma is the primary factor leading to diabetic foot ulcerations. Approximately 45-60% of all diabetic ulcerations are purely neuropathic. Other forms of neuropathy may also play a role in foot ulcerations. Motor neuropathy resulting in anterior crural muscle atrophy or intrinsic muscle wasting can lead to foot deformities such as foot drop, equinus, and hammertoes. In people with diabetes, 22.8% have foot problems such as amputations and numbness, compared with 10% of nondiabetics. Over the age of 40 years old, 30% of people with diabetes have loss of sensation in their feet.

**CLINICAL RECOMMENDATION STATEMENTS:**

Recognizing important risk factors and making a logical, treatment-oriented assessment of the diabetic foot requires a consistent and thorough diagnostic approach using a common language. Without such a method, the practitioner is more likely to overlook vital information and to pay inordinate attention to less critical points in the evaluation. A useful examination will involve identification of key risk factors and assignment into appropriate risk category. Only then can an effective treatment plan be designed and implemented. (ACFAS Guidelines; American Diabetes Association Standards of Care in Diabetes -2025)

**REFERENCES:**

American Diabetes Association. Standards of care in diabetes. Retrieved from <https://professional.diabetes.org/standards-of-care>

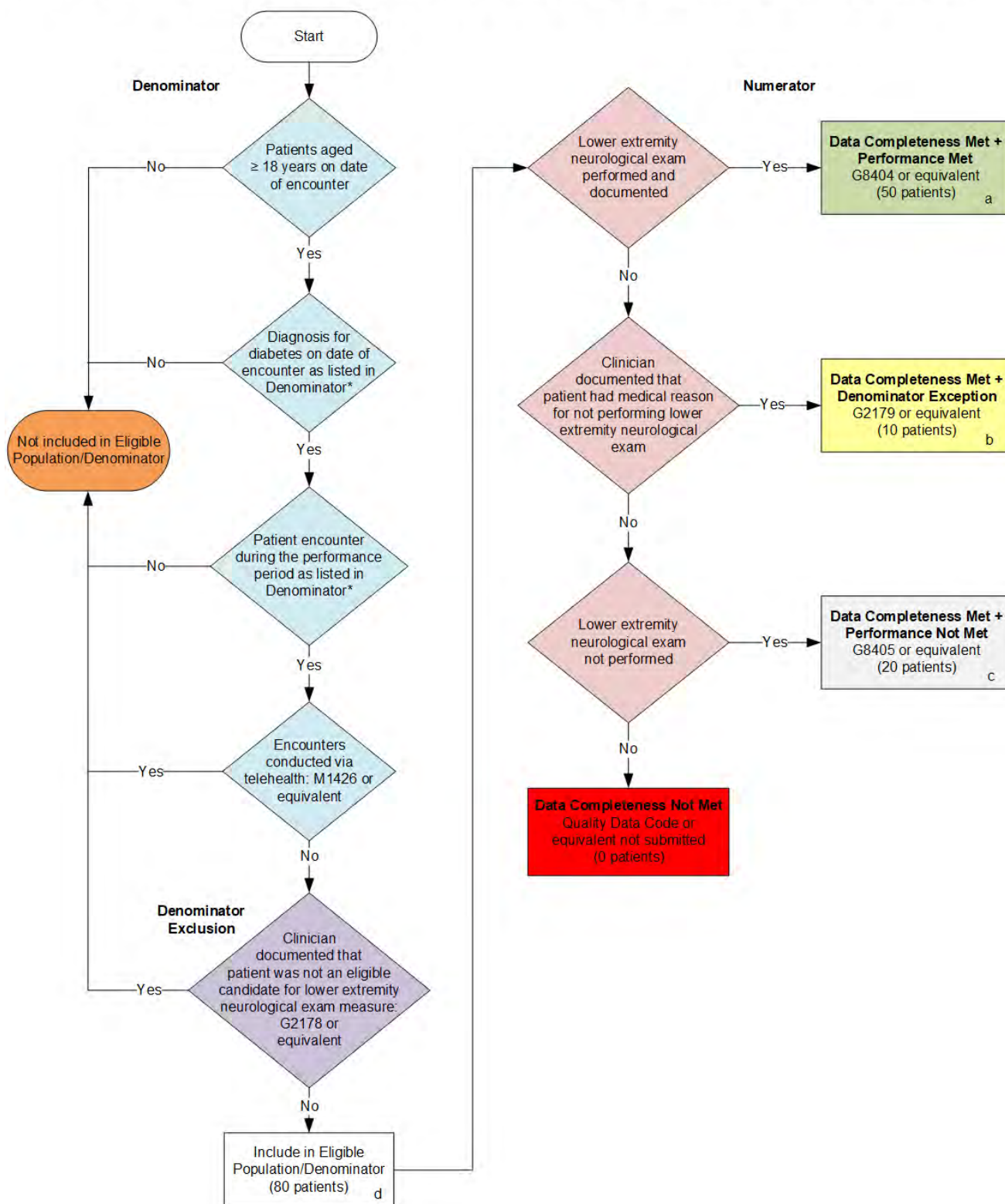
**COPYRIGHT:**

THE MEASURE AND SPECIFICATIONS ARE PROVIDED "AS IS" WITHOUT WARRANTY OF ANY KIND.

This measure is owned by the American Podiatric Medical Association (APMA), copyright 2025. CPT® contained in the Measure specifications is copyright 2004-2025 American Medical Association. ICD-10 is copyright 2025 World Health Organization. All Rights Reserved.

**2026 Clinical Quality Measure Flow for Quality ID #126:  
Diabetes Mellitus: Diabetic Foot and Ankle Care, Peripheral Neuropathy – Neurological Evaluation**

*Disclaimer: Refer to the measure specification for specific coding and instructions to submit this measure.*



#### SAMPLE CALCULATIONS

**Data Completeness=**

$$\frac{\text{Performance Met (a=50 patients)} + \text{Denominator Exception (b=10 patients)} + \text{Performance Not Met (c=20 patients)}}{\text{Eligible Population / Denominator (d=80 patients)}} = \frac{80 \text{ patients}}{80 \text{ patients}} = 100.00\%$$

**Performance Rate=**

$$\frac{\text{Performance Met (a=50 patients)}}{\text{Data Completeness Numerator (80 patients) – Denominator Exception (b=10 patients)}} = \frac{50 \text{ patients}}{70 \text{ patients}} = 71.43\%$$

\*See the posted measure specification for specific coding and instructions to submit this measure.

NOTE: Submission Frequency: Patient-Process

CPT only copyright 2025 American Medical Association. All rights reserved.  
The measure diagrams were developed by CMS as a supplemental resource to be used in conjunction with the measure specifications. They should not be used alone or as a substitution for the measure specification.

v10

### 2026 Clinical Quality Measure Flow Narrative for Quality ID #126:

### Diabetes Mellitus: Diabetic Foot and Ankle Care Peripheral Neuropathy – Neurological Evaluation

*Disclaimer: Refer to the measure specification for specific coding and instructions to submit this measure.*

1. Start with Denominator
2. Check *Patients aged greater than or equal to 18 years on date of encounter*:
  - a. If *Patients aged greater than or equal to 18 years on date of encounter* equals No, do not include in *Eligible Population/Denominator*. Stop processing.
  - b. If *Patients aged greater than or equal to 18 years on date of encounter* equals Yes, proceed to check *Diagnosis for diabetes on date of encounter as listed in Denominator\**.
3. Check *Diagnosis for diabetes on date of encounter as listed in Denominator\**:
  - a. If *Diagnosis for diabetes on date of encounter as listed in Denominator\** equals No, do not include in *Eligible Population/Denominator*. Stop processing.
  - b. If *Diagnosis for diabetes on date of encounter as listed in Denominator\** equals Yes, proceed to check *Patient encounter during the performance period as listed in Denominator\**.
4. Check *Patient encounter during the performance period as listed in Denominator\**:
  - a. If *Patient encounter during the performance period as listed in Denominator\** equals No, do not include in *Eligible Population/Denominator*. Stop processing.
  - b. If *Patient encounter during the performance period as listed in Denominator\** equals Yes, proceed to check *Encounters conducted via telehealth*.
5. Check *Encounters conducted via telehealth*:
  - a. If *Encounters conducted via telehealth* equals Yes, do not include in *Eligible Population/Denominator*. Stop processing.
  - b. If *Encounters conducted via telehealth* equals No, proceed to check *Clinician documented that patient was not an eligible candidate for lower extremity neurological exam measure*.
6. Check *Clinician documented that patient was not an eligible candidate for lower extremity neurological exam measure*:
  - a. If *Clinician documented that patient was not an eligible candidate for lower extremity neurological exam measure* equals Yes, do not include in *Eligible Population/Denominator*. Stop processing.
  - b. If *Clinician documented that patient was not an eligible candidate for lower extremity neurological exam measure* equals No, include in *Eligible Population/Denominator*.
7. Denominator Population:
  - Denominator Population is all Eligible Patients in the Denominator. Denominator is represented as Denominator in the Sample Calculation listed at the end of this document. Letter d equals 80 patients in the Sample Calculation.
8. Start Numerator
9. Check *Lower extremity neurological exam performed and documented*:
  - a. If *Lower extremity neurological exam performed and documented* equals Yes, include in *Data Completeness Met and Performance Met*.
    - *Data Completeness Met and Performance Met* letter is represented in the Data

Completeness and Performance Rate in the Sample Calculation listed at the end of this document. Letter a equals 50 patients in the Sample Calculation.

- b. If *Lower extremity neurological exam performed and documented* equals No, proceed to check *Clinician documented that patient had medical reason for not performing lower extremity neurological exam*.
10. Check *Clinician documented that patient had medical reason for not performing lower extremity neurological exam*:
  - a. If *Clinician documented that patient had medical reason for not performing lower extremity neurological exam* equals Yes, include in *Data Completeness Met and Denominator Exception*.
    - *Data Completeness Met and Denominator Exception* is represented in the Data Completeness and Performance Rate in the Sample Calculation listed at the end of this document. Letter b equals 10 patients in the Sample Calculation.
  - b. If *Clinician documented that patient had medical reason for not performing lower extremity neurological exam* equals No, proceed to check *Lower extremity neurological exam not performed*.
11. Check *Lower extremity neurological exam not performed*:
  - a. If *Lower extremity neurological exam not performed* equals Yes, include in *Data Completeness Met and Performance Not Met*.
    - *Data Completeness Met and Performance Not Met* letter is represented in the Data Completeness in the Sample Calculation listed at the end of this document. Letter c equals 20 patients in the Sample Calculation.
  - b. If *Lower extremity neurological exam not performed* equals No, proceed to check *Data Completeness Not Met*.
12. Check *Data Completeness Not Met*:
  - If *Data Completeness Not Met*, the Quality Data Code or equivalent was not submitted. 0 patients have been subtracted from the Data Completeness Numerator in the Sample Calculation.

### Sample Calculations

Data Completeness equals Performance Met (a equals 50 patients) plus Denominator Exception (b equals 10 patients) plus Performance Not Met (c equals 20 patients) divided by Eligible Population/Denominator (d equals 80 patients). All equals 80 patients divided by 80 patients. All equals 100.00 percent.

Performance Rate equals Performance Met (a equals 50 patients) divided by Data Completeness Numerator (80 patients) minus Denominator Exception (b equals 10 patients). All equals 50 patients divided by 70 patients. All equals 71.43 percent.

\*See the posted measure specification for specific coding and instructions to submit this measure.

NOTE: Submission Frequency: Patient-Process

The measure diagrams were developed by CMS as a supplemental resource to be used in conjunction with the measure specifications. They should not be used alone or as a substitution for the measure specification.



