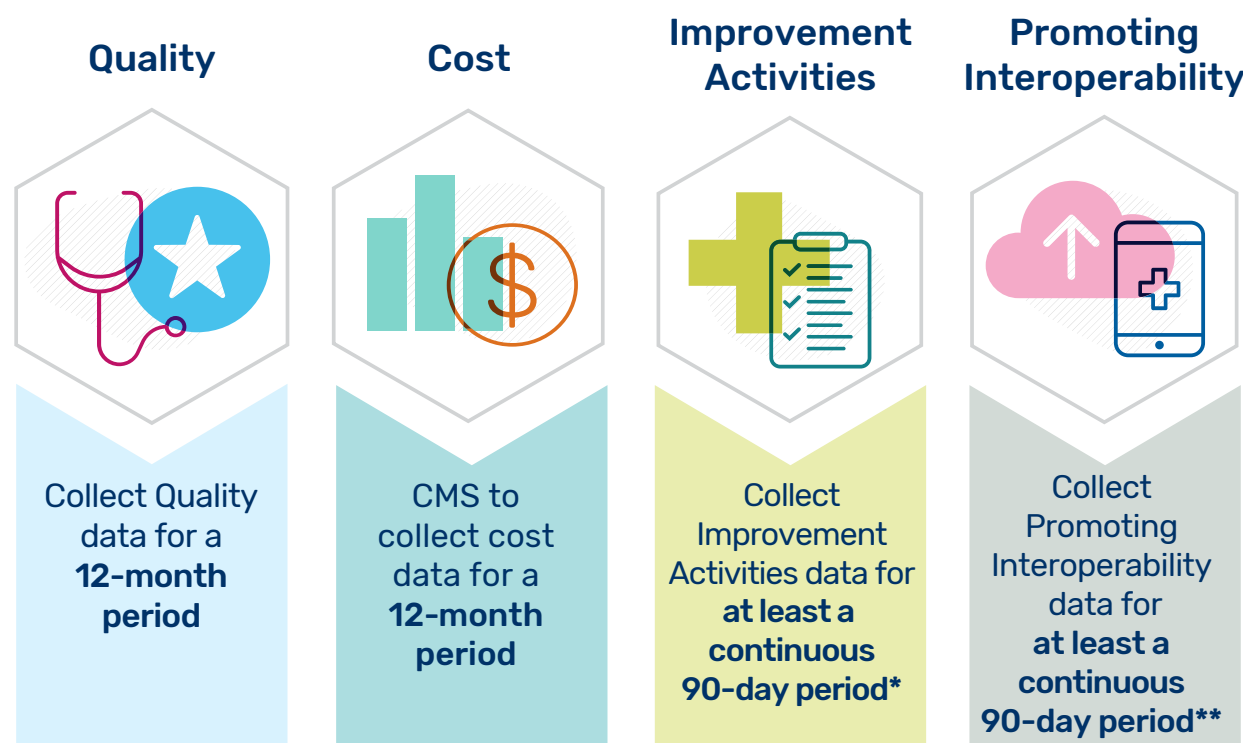


Merit-based Incentive Payment System (MIPS)

How to Submit 2018 Data

For the 2018 performance year, MIPS eligible clinicians should collect data for the [Quality](#), [Improvement Activities](#), and [Promoting Interoperability](#) performance categories. We use Medicare claims data to calculate the [Cost](#) performance category score so you don't have to submit any data for this performance category.

Below is the performance period length for each of the MIPS performance categories:



To find out if you're eligible for [MIPS](#) in 2018, use the [Quality Payment Program Participation Status Tool](#).** If you joined a new practice between September 1, 2017 and August 31, 2018, please make sure to check the tool at the end of 2018 to see if you're eligible at your new practice.

Need Help?

- Visit the [Quality Payment Program website](#)
- Find your [local support organization](#)
- Contact the Quality Payment Program at QPP@cms.hhs.gov or 1-866-288-8292 (TTY: 1-877-715-6222)

*Last day to begin a continuous 90-day period is October 3.

**The participation tool doesn't include Medicare Shared Savings Program Track 1 participants.

***If you are participating in MIPS as an individual clinician and you choose to use claims to submit Quality performance category data, you will attach quality data codes to your claims throughout the 2018 performance year. The last day for submitting 2018 claims with quality data codes for the 2018 performance period is determined by your Medicare Administrative Contractor (MAC) but must be processed 60 days after the close of the performance period. Please check with your MAC for this guidance.

2018 Performance Year Milestones

January 1, 2018

2018 performance year starts

June 30, 2018

Group registration deadline for CMS Web Interface and CAHPS for MIPS Survey

October 3, 2018

Last day to begin a continuous 90-day period to collect data for Improvement Activities and Promoting Interoperability performance categories**

December 31, 2018

2018 performance year ends/QPP Promoting Interoperability and Extreme and Uncontrollable Circumstances Exception Applications close

January 2, 2019

2018 MIPS data submission period for 2018 begins

January 22, 2019

2018 MIPS data submission period for CMS Web Interface begins

March 2019

2018 MIPS claims data submission closes***

March 22, 2019

2018 CMS Web Interface data submission closes

April 2, 2019

MIPS data submission period for 2018 closes